



# Lovell's White Mountains Tours



THE LOVELL BUS LINES, INC.  
FLEET HEADQUARTERS  
MAYNARD, MASS.



# Washington House

Penacook, N. H.



A Thoroughly Modern Country Hotel  
Every Convenience

Large Airy Rooms

Private Baths

A Convenient Stopping Place For Lunch  
On The Way To The Mountains

Six Miles North of Concord on the Main Road  
to the Mountains.

A. W. EASTER, Mgr.



# LOVELL'S WHITE MOUNTAINS TOURS

*New England's Greatest  
Short Vacation Trip*



A Three Day Tour Starting  
Every Tuesday and Saturday  
Commencing on June 16th



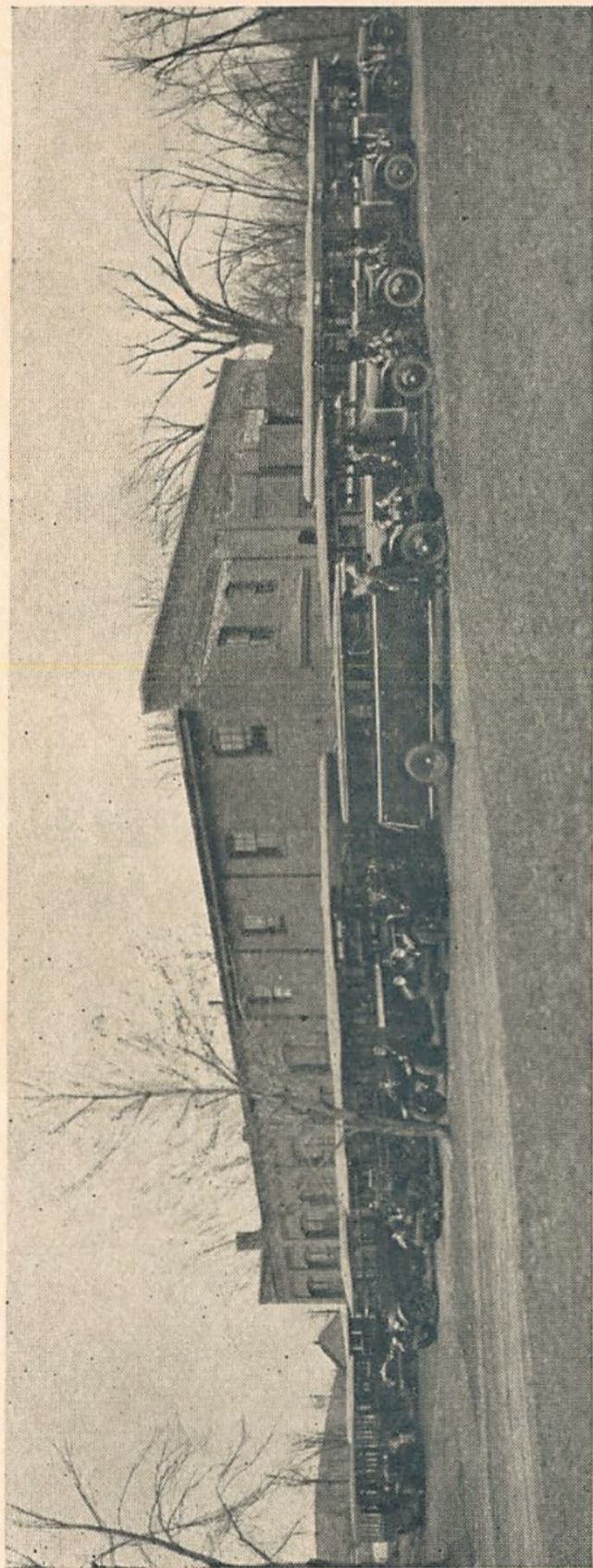
THE LOVELL BUS LINES, Inc.

Main Office and Fleet Headquarters

MAYNARD, MASS.

Telephone Connection





Fleet Headquarters



## THE TOUR

Lovell's Three Day Tour to the White Mountains and Seashore is, we think, the finest trip of its kind in New England. For scenic beauty it is unequalled, and the hotel accommodations are ideal. Whether you make the trip alone or in company of friends it is our aim to see that you enjoy every minute of the journey.

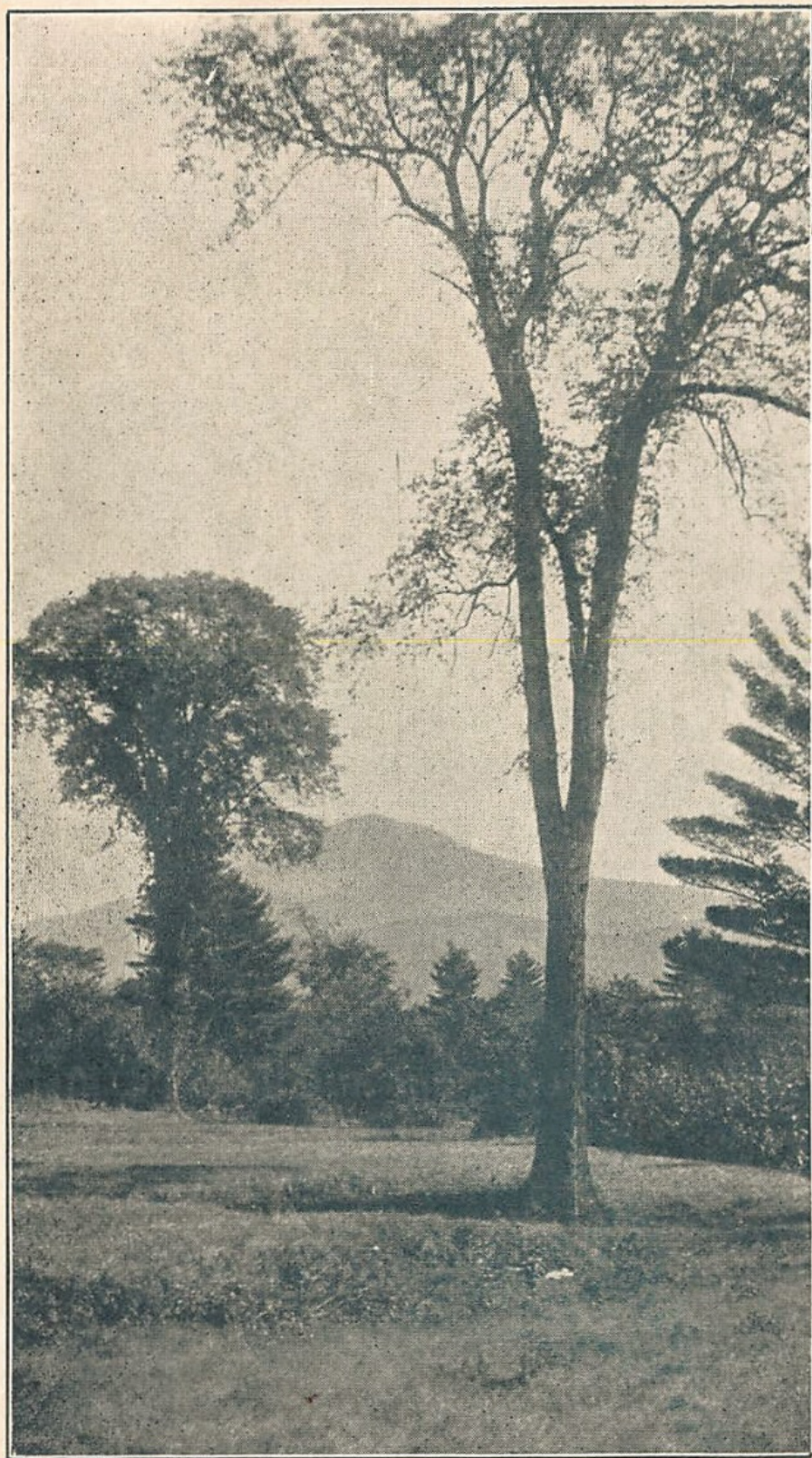
## THE FARE

The entire cost of this tour is only \$27.50, which includes not only your transportation, but your meals en route, your hotel accommodations for the two nights, free guide service, etc. We predict a very heavy travel this season and while we have a large fleet of Busses we suggest that you make reservation early. Trips leave every Tuesday and Saturday, beginning June 16, 1925.

## EQUIPMENT

Three luxurious Busses built especially for this tour, the Miss Maynard, Miss Hudson, and Miss Concord, identical in appointments and remarkably comfortable in riding qualities, fur-





Mt. Kearsarge from Bartlett



nish the means of travel. Expert Chauffeurs, who are also experienced guides, drive you carefully and safely over the mountain trails.

## HOSTESS

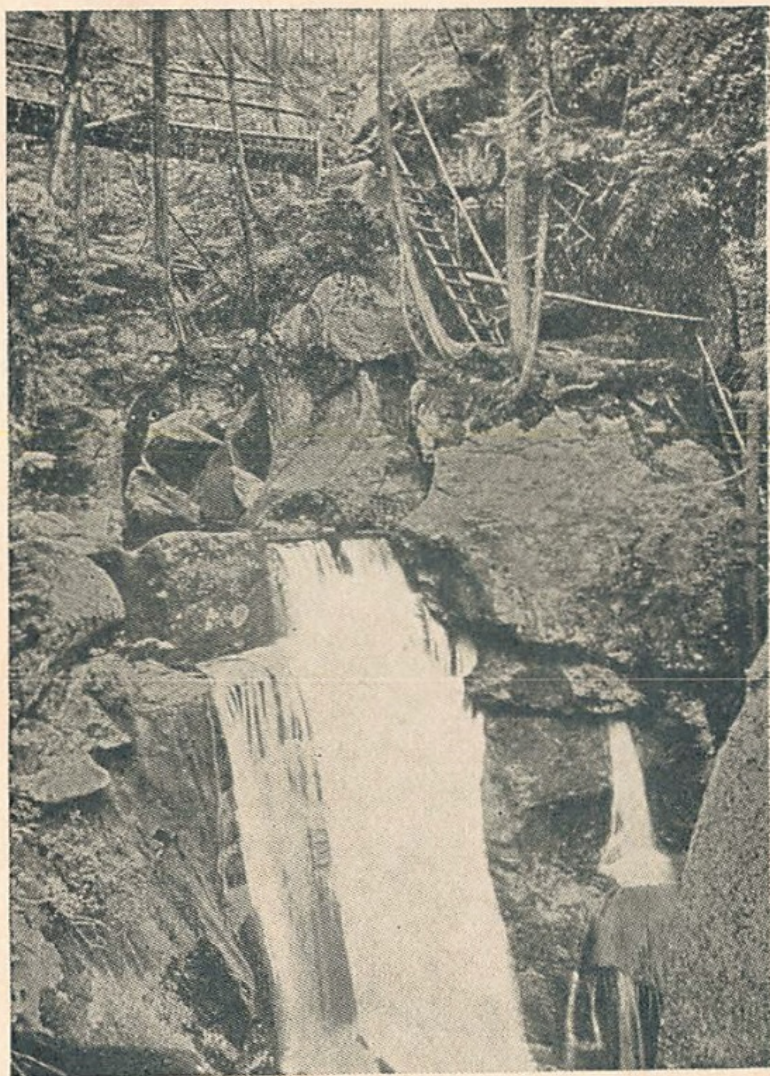
A Lady Hostess will accompany each trip from start to finish and will be a companion to the ladies of the party. Ladies making this trip unattended by escorts may feel perfectly at ease that their comfort will be properly looked after.

## FIRST DAY

The start is made from the headquarters of our lines in Maynard at 8 o'clock in the morning. For those living at a distance from this point arrangements can be made with us so that all will be at the starting place on time.

Across country to Lowell is the first leg of our journey, and then we follow the shores of the Merrimack River to Nashua. Now we are on the Daniel Webster highway passing through rolling country and beautiful scenery in the Merrimack Valley. In the distance you get the first view of the White Mountain Range.





Paradise Falls, Lost River.



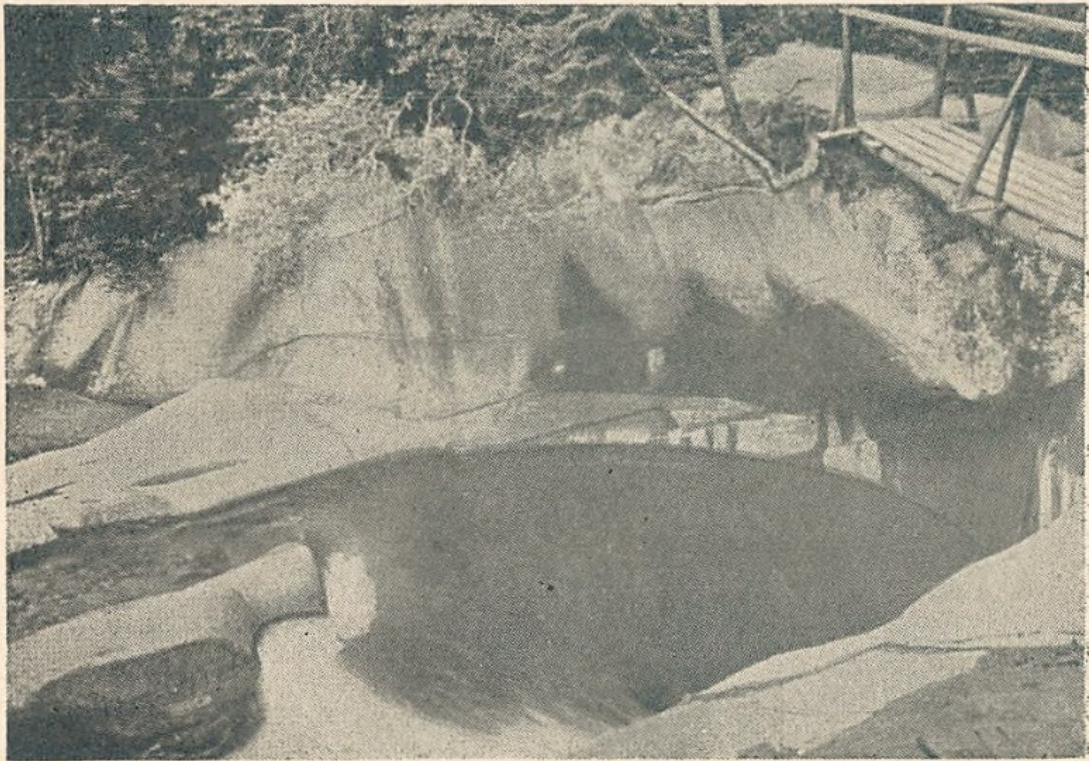
At 10.30 we reach Manchester where we pass the great Cotton Mills. We will stop in Manchester about 20 minutes after which we motor on to Concord, the capitol of the Granite State. Four miles out of the city we pass Saint Mary's Seminary and obtain a beautiful view of the hills, and if you like, we will stop here while you bring your camera into action. We pass through many pretty villages and then enter the City of Concord, where lived some of the Nation's leaders, Daniel Webster, Horace Greeley, John Starke, Franklin Pierce and Salmon P. Chase. The Capitol Buildings and Granite quarries attract our attention as we motor on to Penacook which we reach at Noon. Here is the Washington Hotel where we will have a first class lunch.

At one o'clock we are off for the mountains, passing Daniel Webster's place in Boscawen and on to Profile Falls, the first attraction in the White Mountains. Mountain streams and waterfalls greet our eye as we journey on to New Found Lake, one of the pretty sheets of water found in New Hampshire. There are mountains all around and a three mile drive on the edge of the lake. Forests of Spruce, Hemlock and Golden Birches surround us as we motor





Echo Lake, Franconia Notch



The Basin and Old Man's Foot, Franconia Notch



through this delightful country. We stop often and arrive at Lincoln before six o'clock.

After a hearty dinner at the Lincoln Hotel you will certainly enjoy a night's rest in this bracing mountain country. You'll find your room comfortable and all modern conveniences are found in this excellent Hotel.

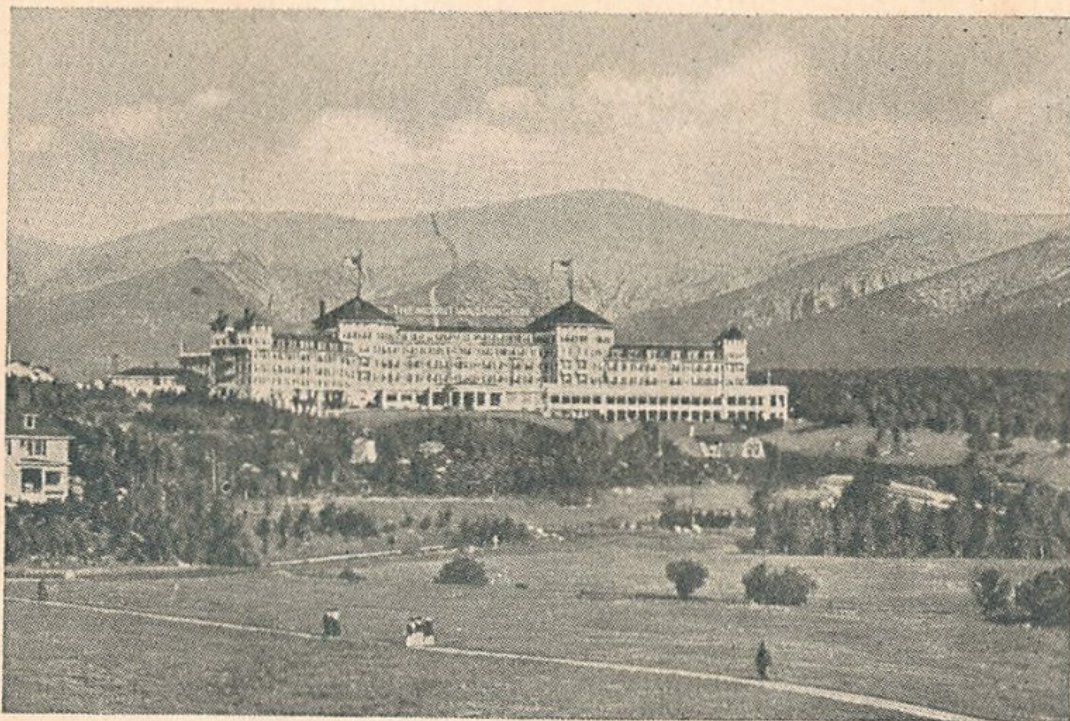
## SECOND DAY

Although the entire trip is full of interest the second day is perhaps the best from a sight-seeing standpoint.

We first see Lost River, which suddenly disappears into the earth, to follow its way underground. We will spend an hour tracing its course through wonderful caverns far beneath the earth's surface and you will see basins, pools and waterfalls as you follow the subterranean passageways. Ferns and mosses of every variety adorn these caverns. As we reach the surface again we behold Paradise Falls, a picture of exquisite beauty.

Now we are off for a ride through Franconia Notch where we will see nature's handiwork in all its glory. The Old Man's Foot attracts our





Mt. Washington and Presidential Range, Bretton Woods



Fabyan House and the Presidential Range



attention. Here a white cascade tumbles into a basin twenty feet deep and whirls around a rock shaped like a human foot. Then, there is the Pool, a great pot hole fifty feet deep, with alpine flowers and ferns growing on the rocky terraces of the surrounding cliffs.

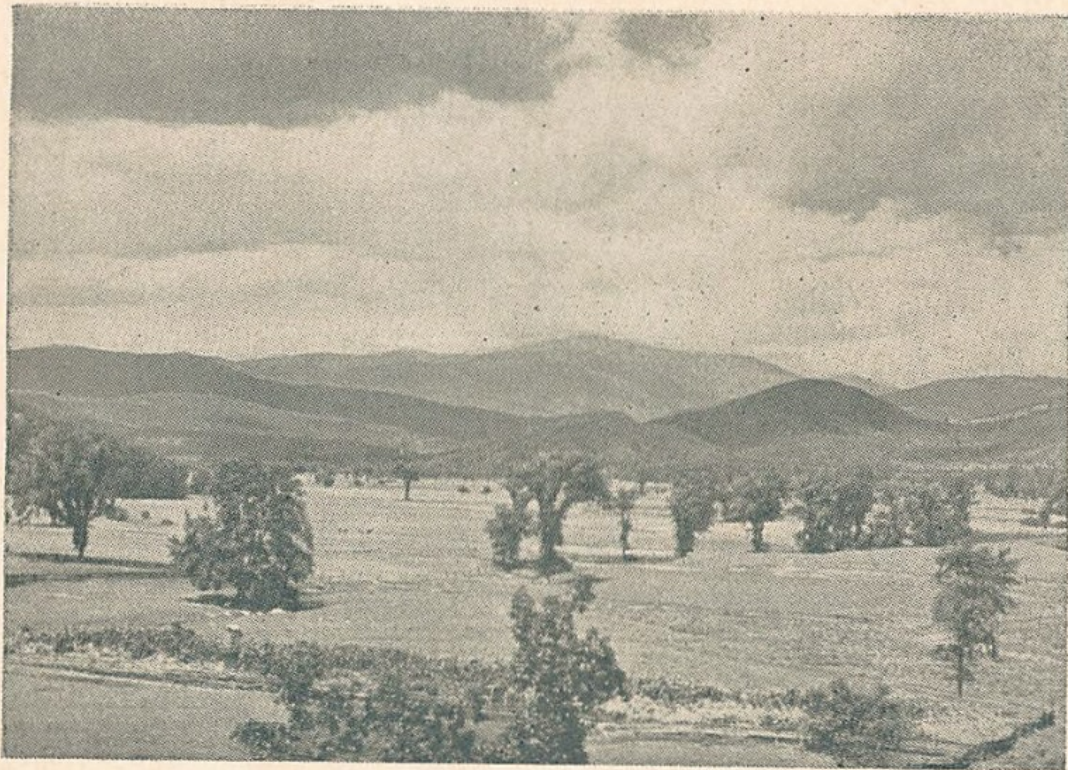
The Indian Head, a natural stone head on the side of Mt. Penigewasset, is a great attraction. The pine trees growing along the top seem to form the Indian's feathered head dress. In the shadow of this mountain we have lunch at Gordon's Cafe, an ideal and charming spot.

And then we continue our drive among the mountains. The Flume, a rocky gorge cut by a stream in the hard granite, is one of the most interesting sights in the mountains. It is a quarter mile long and a hundred feet deep.

The Old Man of the Mountains, the most natural stone face in all the world, is plainly seen and next beautiful Profile Lake delights us. Echo Lake also calls forth our admiration as it lies so prettily under the purple ledges of Eagle Cliff.

We visit Bretton Woods and then begin a wonderful journey through Crawford Notch, a winding roadway between towering mountains which brings us at last to the Howard House,





Mt. Washington from Intervale



Mts. Bartlett and Kearsage from the Saco, North Conway



Bartlett, where we have dinner and spend the night.

### THIRD DAY

Off early, new wonders appear before us as we head toward the seashore. Following along the banks of the Saco River, surrounded by Mountain Peaks we enter the little village of Glenn. Then on through North Conway and Conway. Fifteen miles further we pass beautiful Mt. Chocorua, and have a fine drive of a mile along the shore of Chocorua Lake. Through W. Ossipee and then past the site of the old Lovewell Fort erected in 1729 and abandoned after the battle of Whittier. Now we pass through the village of Mountain View and cross the Saco River at this point, driving about 10 miles through the pines, with beautiful views on all sides. On the left we pass Duncan Lake where we stop a while and snapshots may be taken. On through Ossipee, Wakefield and Lowell Lake, Milton, and then on to Rochester, 10 miles ahead, and then Dover. Reaching Portsmouth we take the boulevard along the shore to Rye Beach and Hampton Beach where we will enjoy a fine shore dinner. Then we will



# GORDON CAFE

In the Shadow of  
INDIAN HEAD



A more delightful place for lunch is  
not to be found in the mountains.

---

The Mountain Air Whets the Appetite.  
We Satisfy It With Excellent Food.



travel by easy stages back to the starting point  
and we believe that all will agree with us that  
no finer short vacation trip could possibly be  
had.







## PRIZE PHOTO CONTEST

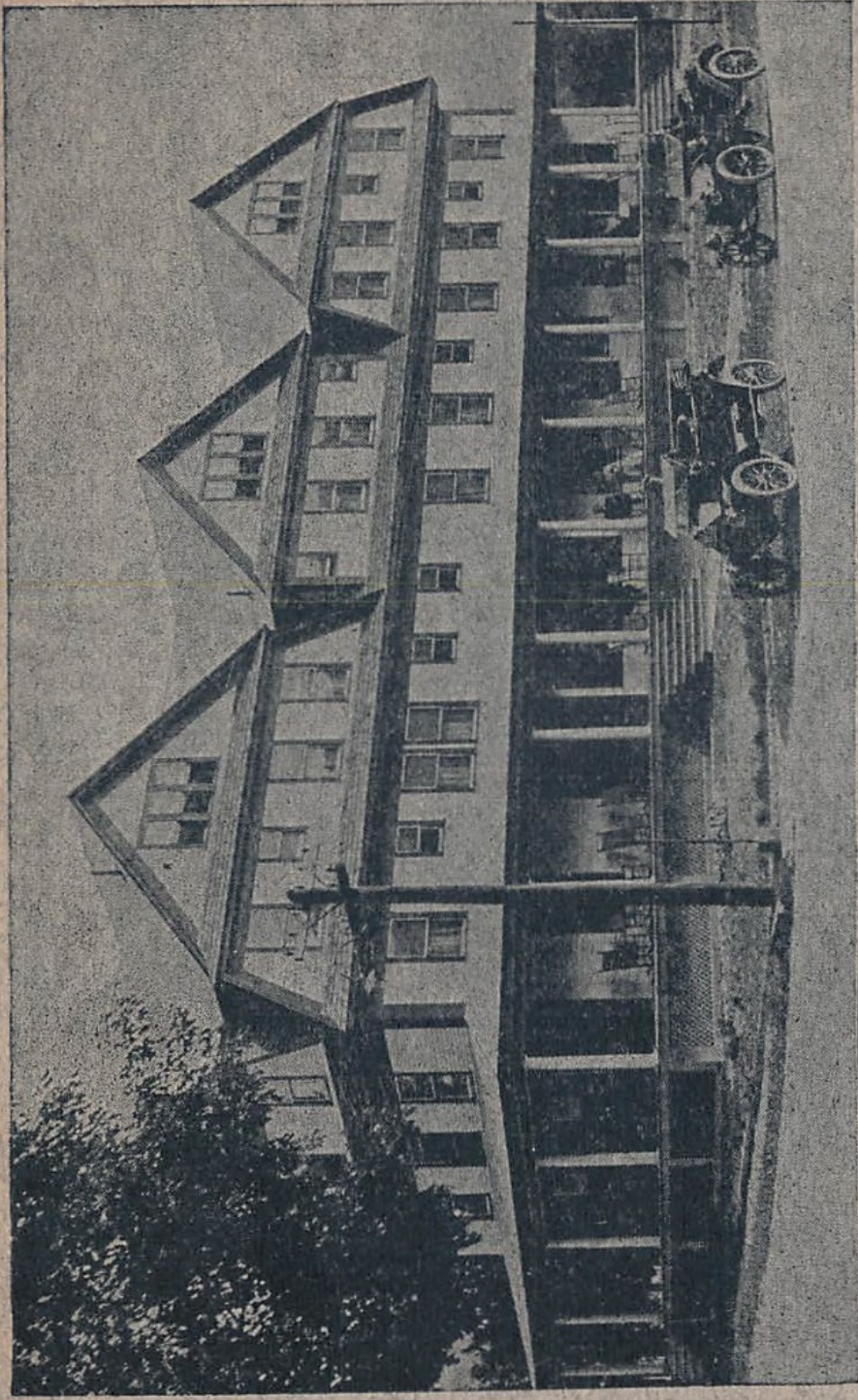
There is no finer field for Amateur Photography than that embraced by our White Mountain Tour and as we are always anxious to secure new views with which to decorate our booklets we make the following prize offer:

For the best photo, taken by a passenger while on one of our White Mts. trips, we will give a free round trip ticket, all expenses paid for this tour. Ticket may be used later in the season or may be transferred to a relative or friend.

Two of these prizes will be awarded during the season. The first contest ends July 15th and the second August 15th.







## HOTEL HOWARD : BARTLETT, N. H.

A New Hotel at the Entrance to Crawford Notch

A Sightly Spot at the foot of the Mountains



# The Lincoln Hotel

Lincoln, N. H.



**In the Midst of the Mountains**

**Vacationists will find here everything that makes  
for pleasure.**

**The Hotel is strictly modern**

**The Food is exceptional**

**The Location is ideal for sight seeing**

**Travelers and Tourists will find our accomodations agreeable**

**Literature upon request**

**A W. GODDARD, Manager**