

digital

MAYNARD

# DIGITAL THIS WEEK



Volume 9 Number 19

October 25, 1982

digital

25

1957-1982

## Canobie was icing on the cake



A three thousand pound, eight-and-one-half foot high cake was the biggest attraction at the Canobie Lake outings this year. The center of Digital's 25th anniversary ceremonies, the cake was made for each of the eleven family outings.

The recipe for one extra large silver anniversary cake with butter cream icing includes:

- 360 lbs. butter
- 360 lbs. flour
- 240 eggs
- 4 lbs. salt
- 12 lbs. baking powder
- 4 lbs. cream of tartar
- 20 oz. vanilla
- 900 lbs. sugar

More than 65,000-employees, their families and guests-helped Digital celebrate its 25th anniversary in the chilly but festive atmosphere of the New Hampshire amusement park.

## VMCS, the manufacturer's building block

The American manufacturer needs to improve productivity to contend with U.S. and foreign competition. Are their machines, manufacturing space, labor and inventory being used efficiently? Digital, as one of the world's largest manufacturers, is no exception.

"When you think that labor may be no more than nine to twelve percent of modern high-volume, high technology manufacturing cost," says Mike Spier, Manufacturing Applications Systems Engineering manager for the MDC Products Group, "materials become the cost to contain and control."

Digital Manufacturing and the MDC Products Group recognized early on that an opportunity existed, both to satisfy a Corporate need and to expand marketing possibilities, in the manufacturing environment. A new Corporate goal was set "Use

*Continued on page 2.*

More photos on Page 12.

Photo by K.

## VMCS *Continued from page 1.*

what we make, sell what we use." MDC will sell Digital's customers the same software used to drive Digital's factories. Digital Manufacturing will help in developing MDC's new products. The ensuing partnership enabled the development of VMCS, a viable, cost effective VAX Manufacturing Control System.

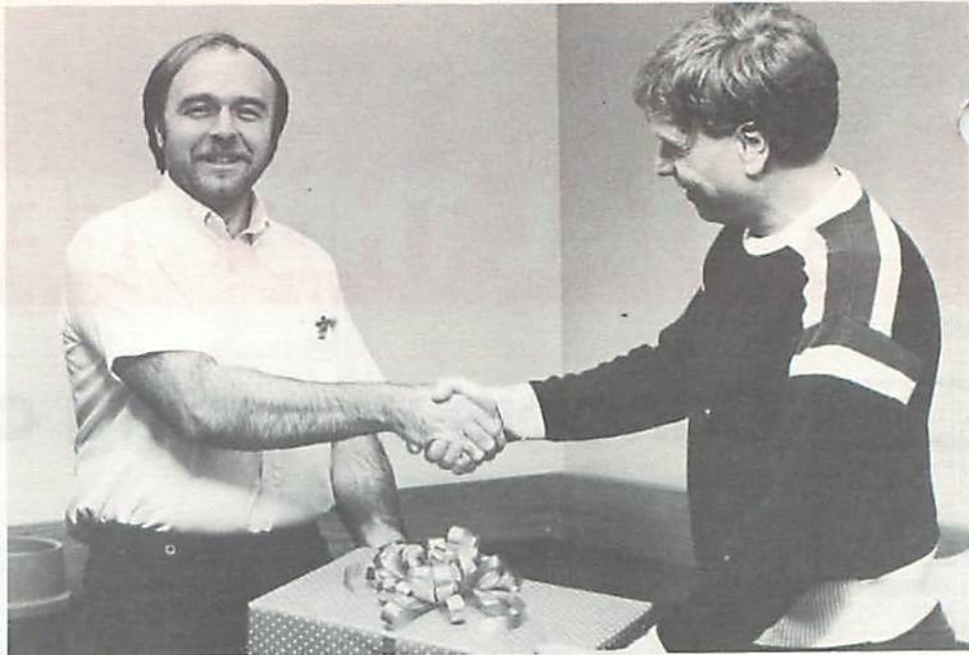
VMCS is an online system for closed-loop Manufacturing Resource Planning. It tracks materials throughout the entire manufacturing process: from Master Schedule planning, production planning, inventory management, to Shop Floor Control and Factory Data Collection. It gives managers and supervisors control over the shop floor and enables them to plan for, and react to, business fluctuation by adjusting production levels.

The system is totally integrated. All parts of the operation — inventory, purchasing, shop floor control and production planning work with the same information base.

VMCS runs on the VAX 32-bit computer family supported by VAX Information Architecture software, VIA. Because VMCS is layered on VIA, plant managers, sales managers and financial planners can establish information links between their departments and VMCS, for a truly integrated manufacturing operation.

The first internal shipments of VAX Manufacturing Control System, VMCS V2X.1a, were made to Terminals Manufacturing's Westfield and Phoenix plants, as part of the preparation for launching volume production of personal computers. VMCS V2X.1a is specially engineered to meet Digital's volume production requirements. An earlier version of VMCS had been in field test, in Westfield, since 30 July.

The system is modular so it can be installed one step at a time without disrupting operations. Other Digital plants planning to install VMCS during the coming year are Albuquerque, Augusta, and San German and Aguadilla, Puerto Rico.



Mike Spier, MDC, presents Terminals Manufacturing Manager Bill McDonough with a "symbolic" VMCS package.

## June '82 Employee Stock Purchase Plan

The June 1982 payment period for the Employee Stock Purchase Plan will come to a close on Tuesday, Nov. 30, 1982. The purchase price for the employee stock will be determined the evening of Nov. 30 after the Fair Market Value (FMV) for the day is received. The Fair Market Value for June 1, 1982 was \$74.75. The purchase price is based on the lower of the two FMV's less a 15 percent discount.

The stock purchased for the June payment period will be available to sell as of Dec. 2, 1982. That means, all sale cards received by Investor Services for the Dec. 1 sales of newly issued stock will be processed and sold on Dec. 2.

### Reminder on sale requests

Sale requests either by card, telex, EMS or walk-ins must be received by Investor Services prior to 12:00 noon (Eastern Standard Time) in order for the stock to be sold the following business morning. All checks

for the proceeds of the sales are mailed by Merrill Lynch five business days after the date of sale.

Investor Services does not wire proceeds for employees or forward checks to Digital offices. Telexes sent to Investor Services should include the following:

- Employee badge number
- Employee name
- Social security number
- Home address
- Mail stop/Work telephone number
- Number of shares to sell
- Purchase date(s) of shares

A confirmation card is no longer required to follow a telex. Inadequate information on a telex may delay the sale of stock. Please maintain your Statement of Ownership for share information. The telex instructions are also listed on the back of the statement. For additional sale cards and telex instructions, contact your Personnel Services Administrator (PSA).

## ESG Introduces VAX-11 DECOR

VAX-11 DECOR is a new graphics software package aimed at assisting engineers in developing new graphics based software applications.

According to Ralph McNall, Engineering Systems Group Marketing Manager, DECOR provides a software interface between an application program and one or more graphics devices. "Device independence results in similar displayed images independent of the particular device being used to view application data. This allows a customer to take advantage of those graphics hardware devices that are the most appropriate in a given situation." This is accomplished by integrating specific device handlers with a device independent display interface.

Device handlers tailor output from the basic graphics functions to the features of the different graphics devices. As a result, an application programmer does not have to learn a new graphics system or produce a major rewrite of the application software for each new device. In its initial release, DECOR will provide device handlers for Digital's VS11 color raster graphics display and the Tektronix 4014 direct view storage terminal.

VAX-11 DECOR, a new Digital product that not only helps to promote a stable in-house graphics software base, but also minimizes the time and cost involved in developing and supporting graphics based applications.

### DIGITAL THIS WEEK



Editor: Christine Medeiros

Send stories, photos, ideas or suggestions to DTW, PK3-1/K23 or call the editor at DTN 8-223-5042. Ads must be submitted in writing to Marketplace, PK3-1/K23. Please direct all Marketplace inquiries to Jennifer Hawes at DTN 8-223-2261.

Digital This Week is published every other week by the Corporate Employee Communication department of Digital Equipment Corporation for the Employees in the Greater Maynard area.

## Internal DECUS Symposium adopts new format

The fall 1982 Internal DECUS Symposium, originally scheduled for November 3-5 at the Sheraton Conference Center, is being rescheduled. The program, as announced, will be presented in small segments at local Digital facilities on dates to be announced.

Plans are now underway to reschedule symposium sessions at internal sites during the next three to four months. An adapted schedule of sessions and locations will be announced in November.

This new format is a more cost effective way to facilitate communication within the Digital-user community. Internal DECUS will continue to provide forums for the exchange of information between internal Digital equipment users and product developers.

## Marlboro has ESP

Since July 1981, more than one hundred-twenty suggestions have been introduced to the Marlboro Manufacturing's Employee Suggestion Program, ESP. An effort to recognize and encourage employee participation in the Manufacturing operation, the suggestion program has brought improvements in product quality, safety and in cost reduction.

Suggestions are collected from boxes located on the manufacturing floor and reviewed by a volunteer committee representing all levels and disciplines within Marlboro Manufacturing. Viable suggestions are researched by the appropriate staff. The ESP Committee has put 20 of these recommendations into practice.

At the plant-wide Employee's Quarterly Meeting, three of the best ideas receive Merit Awards from the committee chairperson and plant manager, Charlie Bradshaw. Posters, t-shirts, logo contest and lots of publicity have made the project very visible and successful. A "Wall of Fame" is planned to identify participating employees along with a colorful photo collage.

This month, Marlboro Manufacturing will give special recognition to the 100th suggestion submitted by George Kevorkian of Quality Control. George has already submitted eight recommendations and received one of the first Quarterly Merit Awards. He is now a committee member.

Credit for the success of the program is due to many more individuals including past chairpersons Dennis Lerra and Joni Salvas, logo designer Ken Palumbo, initial task force coordinator Dinesh Maheshwary and the employees who served as committee members over the past year. For more details on ESP, contact the current chairperson, Dave Coombs, at DTN 231-5790.

## LCG celebrates \$1000th KL frame



(Left to right) Ken Olsen, Rose Ann Giordano, LCG product group manager, and Dave White, Sales rep, celebrate the sale and shipping of the 1000th KL mainframe, Digital's largest system. Dave made the sale to Parker Brothers in Salem, Mass. The system was made in the Marlboro Manufacturing plant.

## Name change for DEC Japan

DEC Japan will have a new legal name and customer number as of Nov. 1. Formerly Digital Equipment Corporation International-Japan, the combination of the Japanese Sales and Service operations will be called Nihon Digital Equipment Corporation, customer number 2489.

The new name signals the formal incorporation of the Japanese Sales and Services operation. It will be a new legal entity, becoming a Japanese company.

All business records and correspondence must reference the new name beginning Nov. 1. It is particularly important that

every order for Japan in product group backlogs be modified and all invoicing and shipping documents use the new name and number. Making changes before Nov. 1 will avoid the complexities of credit memos and adjustments.

Beginning Nov. 1, the old name/customer number should be used only for adjustments to or changes incurred by business concluded before Nov. 1. Please direct any questions to Mary Callahan at DTN 288-6628 or Mitch Guziejka at DTN 288-6658.

## Scholarships for Advanced Studies Programs Announced

Digital dependents living in Massachusetts or New Hampshire are now eligible to receive a scholarship for attendance in the Massachusetts Advanced Studies Program or the St. Paul's Advanced Studies Program. Both of these programs are designed for high school students between their Junior and Senior years and are offered for six weeks during the summer.

The Massachusetts Advanced Studies Program (MASP) is a residential program held at Milton Academy in Milton, MA. Students may only attend through the recommendation of their local public or parochial high school (students attending private high schools are not eligible). Over 400 recommendations are submitted; MASP chooses approximately 200 students for attendance. The selection process begins in September of the student's Junior year. If a student is nominated by their high school an application will be forwarded to the student by MASP.

The St. Paul's Advanced Studies Pro-

gram is a residential program held at St. Paul's Academy in Concord, NH. Students are recommended by their high schools but any 11th grade student who wishes to apply may do so by contacting St. Paul's at (603) 225-3341. Student applicants must apply by November 1. Each applicant is interviewed individually; approximately 200 students are selected to attend.

Students for both programs are accepted on the basis of high school grades, recommendations of principals, counselors and teachers, aptitude tests, and, in the case of St. Paul's, a personal interview. No applications are available through Digital for either program; dependents of Digital employees are identified through MASP and St. Paul's. Total tuition is paid for any dependent attending; application fees, books, lab fees, and spending money are the responsibility of the student.

Any questions regarding the programs may be directed to Donna Spencer (DTN) 223-5320.

## Offerings from Ed Services Seminars

For more information or to register for the following courses, call the Seminar Registrar at DTN 249-4949. You may also register by sending a memo with your name, badge number, cost center, and cost center manager's approval to: Seminar Registrar, BUO/E58. Software Services employees should contact their Software Services registrars.

### Software Project Management: A Systematic Approach

Controlling the increasing costs of software has become a key goal of data processing management. This seminar presents a detailed systematic approach to managing, measuring, and controlling the system and application software development process. The seminar will cover the entire management of software projects and proven methods that measure quality and productivity.

December 13-14, Andover, Mass

### Executive Computing for the Non-Data Processing Manager

At this unique three-day seminar, participants will learn how to get things done utilizing BASIC computer language. This seminar is designed for the manager and assumes no data-processing background. Participants will have an opportunity to solve problems in a wide range of management applications, including finance, manufacturing, decision making and marketing. The result: executives who understand how to get behind the numbers and get the job done.

December 15-17, Bedford, Mass

### Protecting Data and Information: A Workshop in Computer Security

As the computer has become an integral part of the day-to-day operations of most businesses, its integrity and security must be addressed. This two-day seminar will discuss three major aspects of computer security: physical security, software security, and surveillance and auditing. It will cover the latest developments in the field as well as proven techniques that have worked to protect the integrity of Digital's computers.

December 16-17, Wakefield, Mass

### Introduction to Datatrieve-11

This seminar will teach attendees to use Datatrieve-11, a powerful data base, query, maintenance package and data base report writer, in just three days. The seminar will cover many important features of Datatrieve-11 and demonstrate its ability to give you:

- faster response to one-time queries
- new applications without the need for large programming staffs
- powerful record selection with subsetting capabilities
- flexible output, including generation of complex reports, complete data lists, lists of single fields, single items from a data set, totals, costs, averages, and minimum and maximum of particular items.

Each section of the seminar combines lectures, labs and exercises which allow you to understand and utilize the various functions of Datatrieve-11.

November 29-December 1, Bedford, Mass.

### Networking: Design and Implementation of Computer Communications Networks

This three-day technical seminar for anyone involved in the design, use or selling of networks is a state-of-the-art presentation of fundamental concepts, technology, and practical implementation of computer networks. It will include an in-depth discussion of network architectures, components and structures with a focus on complete network design.

November 16-18, Bedford, Mass.

December 14-16, Boston, Mass

### Design of Applications under VAX/VMS

This interactive four-day seminar focuses on application design approaches that maximize the use of the hardware and software involved. Three case studies of typical customer applications, data acquisition, process control and transaction processing, show how to exploit system features to achieve efficient design solutions for each application. Upon completion, attendees will thoroughly understand the interrelationship between system hardware and software functionality for design.

Prerequisites: The attendee should have attended "VAX/VMS Utilities and Commands" and should have a working ability to program in VAX-11 FORTRAN/MACRO or similar experience on another system.

November 16-19, Bedford, Mass.

At the sound of the beep ...

## Do you use an Automatic Telephone Answering System?

If you do, the User Research Group (URG) in Central Engineering would like your help in investigating voice as a communications mode. By examining Automatic Telephone Answering System usage, URG hopes to discover the factors determining how callers feel about such systems and the reasons for both positive and negative attitudes toward leaving messages. This information will be used as we look toward the development of computer systems with voice input and output capabilities.

If you are willing to be a part of this effort, please call Elizabeth Liggio at DTN 225-5880.

## Registration open for Clark Spring semester

It is not too late to apply for Spring Admission to the Clark University MBA program. The application deadline is November 30 for Spring admission.

As of the Spring Semester, the Clark University MBA Program will be offered at two sites: the Clark Campus in Worcester and Digital's Parker Street facility in Maynard. The classes held at Digital will now be open to all Clark MBA students, not only Digital employees. This change will allow for a more varied student population in all classes. Programs offered at both sites will continue to have the same curriculum and be taught by the same faculty.

For those who do not want to begin the program until the Summer or Fall of 1983 and need to take the GMATs, they are being offered on January 29, 1983. The deadline for registration for the GMATs is December 27, 1982. Applications to the MBA program are due March 30 for Summer admission and July 30 for Fall admission.

For more information, contact Graduate School of Management, Clark University, 950 Main Street, Worcester, MA 01610.

### RADIO CITY MUSIC HALL

WHEN: Saturday, December 4th, 1982  
-and/or-

Saturday, December 11th, 1982

Tickets: \$33 per person  
Buses will depart Parker Street PK3 Parking Lot promptly at 7:00AM.

12:00 Noon is expected arrival time at Rockefeller Center. The remainder of the afternoon is yours to enjoy as you wish.  
7:30PM Radio City Show begins  
10:00PM Departure back to Parker Street.  
Please indicate date you wish to attend on order form available from your local employee activities office.

RESERVATIONS MUST BE RECEIVED BY NOV. 12.

# THE MARKETPLACE



## APPLIANCES

- REFRIG/FREEZER, Amana, white, 19 cu ft, gd working cond, \$75, Myrae, 223-9015
- WASHER & DRYER, Whirlpool, apt size, almond, side-by-side or stack, exc cond, \$450/pr, B/O, Jeff, 226-7209
- WASHER & DRYER, Kenmore, 4-5yrs old, gd cond, pref to sell both, will separate, \$100 ea, Beverly, 223-6888
- TRASH COMPACTOR, Hotpoint, under-counter, 2yrs old, 35"H x 15"W x 25"D, \$100, B/O, Margaret, 247-2175
- REFRIGERATOR, white, 12 cu ft, runs well, \$100, B/O, Linda, 231-6747
- WASHING MACHINE, Maytag, white, about 10yrs old, not used much, \$175, Brenda, 247-2070
- AIR CONDITIONER, Westinghouse, 5000BTU, orig \$280, new cond, \$170, David, 284-3280
- ELECTRIC DRYER, Whirlpool, white, exc cond, runs perfectly, \$60, Debbie, 251-1258
- FOOD MIXER, Hamilton Beach, customer model, all chrome, 2 mixing bowls, like new, \$40, Ed, 223-2793
- WASHING MACHINE, Kenmore, 5spd, dual agitator, lrg capacity, exc cond, \$250 firm, Kathy, 247-2278
- FREEZER, Frigidaire, approx 20 cu ft, upright, works great, \$50, Dick, 223-6468
- WASHER & DRYER, portable, Sears, 3yrs old, exc cond, \$350, Mark, 279-5414

## CARS

- '74 TOYOTA CELICA GT, 5spd, one owner, high mileage, new tires, \$1200, Jim, 231-4657
- '81 HONDA ACCORD, 5spd hatchback, AM/FM cass, 18Kmi, perfect condition, \$6800, Jane, 276-9542
- '75 OLDSMOBILE CUTLASS SUPREME, basically sound, nds some work, gd first car, Joy, 223-9251
- '77 HONDA CIVIC CVCC HATCHBACK, 2dr, 4cyl, 4spd, 69K mi, 2 snow tires, nds work, \$3000, B/O, Roni, 249-1757
- '72 VW SQUAREBACK, 90Kmi, runs fairly well, nds some work, \$400, will talk, Erik, 223-1147
- '72 FORD MAVERICK, 6cyl, auto, reliable, gd mech cond, some rust, Linda, 223-4101
- '70 VOLVO 144S, 4spd, 4cyl, dual carbs, 103Kmi, 4 gd radials, 4 mtd snow tires, \$750 firm, Mark, 283-6278
- '74 DODGE 6x6, flatbed, '9' power angle plow, \$3000, B/O, Donna, 225-6111
- '81 PLYMOUTH CHAMP, 2dr hatchback, 52mpg, AM/FM, clean, \$3400, Marty, 223-9972
- '81 HONDA PRELUDE, auto, AM/FM cass, elec sunrf, 15K mi, red, exc cond, \$6950 firm, Elliott, 279-5288
- '79 CAMARO Z28, 4spd, AM/FM cass, sunrf, tach, rear defog, c/lock, mags, just tuned, \$5895, Mark, 225-6308
- '73 PONTIAC CATALINA, 4dr, AC, orig owner, 72Kmi, runs well, clean, gd cond, \$1200, Terry, 225-6017
- '77 DATSUN 280Z, '78 eng, 44Kmi, mags, AM/FM cass, new exhaust, clutch, no rust, \$7000, Nichole, 236-2564
- '80 DODGE OMNI 024, 4spd, 26Kmi, one owner, AM/FM, Rally pkg, vy clean, \$4800, Barbara, 225-6111
- '76 FIAT X19, convertible, 60Kmi, new brakes, gd running cond, int nds work, \$3500, Karen, 226-7287
- '78 MG MIDGET, 72Kmi, gd cond, \$2300, B/O, AJ, 223-3141
- '77 DATSUN 280Z, one owner, well maint, \$4500, '74 CAPRI, 4cyl, AM/FM, 25mpg, \$1000, Michael, 249-4207
- '75 PLYMOUTH FURY WAGON, auto, PS, PB, AC, new brakes, shock, exhaust, tune-up, \$1100, B/O, Tom, 223-8019
- '73 OLDS DELTA 88, 4dr, AC, PB, PS, 70Kmi, runs great, \$795, Steve, 223-5353
- '82 AMC EAGLE SX4, 4spd, 4cyl, Ziebart, 4 whl drive, 4 radials, AM/FM cass, sport pkg, \$7500, Rhoda, 234-4406
- '81 VW PICKUP, 5spd, diesel, AC, AM/FM, cap, exc cond, \$6795, Dolores, 223-7164
- '81 CAMARO Z28, auto, 12Kmi, T-roof, AM/FM cass, chapman lock, \$9000, Judy, 289-6234
- '78 FORD THUNDERBIRD, PS, PB, extras, vy clean, exc cond, \$3900, Jane, 234-4687
- '74 DODGE COLT WAGON, 4cyl, 4spd, AC, gd cond, \$1000, Howard, 234-4930
- '80 JEEP CJ5, 4cyl, 35Kmi, brown, custom int, must sell, \$4600, Marc, 228-2188
- '75 CHEVY MONZA, town coupe, 4cyl, 4spd, 89Kmi, blue, radials, AM, James, 234-4880
- '71 VOLVO 2dr, 4spd, high mileage, well maint, dependable, gd radials, gd cond, Karen, 288-6926
- '81 DATSUN 210 HATCHBACK, 5spd, rear defog, radials pkg, AM, 40mpg, lt brown, \$4995, B/O, Mingo, 232-2412
- '73 VW convertible, little rust, many new parts, \$2500, B/O, Bill, 231-5617
- '70 FIAT 124 SPYDER, fiberglas body parts, runs but nds work, \$200, Colin, 247-3032
- '72 CHRYSLER IMPERIAL LEBARON, auto, 4dr, PS, PB, AC, AM/FM, body nds work, \$500, B/O, Paul, 223-8345
- '75 CUTLASS, 8cyl, 71Kmi, radials, blue, white vinyl roof, exc cond, \$2300, B/O, Claudia, 278-4069
- '73 MERCURY CAPRI, V-6, 4spd, mechanically gd, body fair, \$525, B/O, Tom, 223-5872
- '79 FIAT STRADA, 5dr, 5spd, bckt seats, rear wiper/defog, AC, 45Kmi, radials, \$4468, neg, Phil, 223-9217
- '70 FORD VAN, new carb, body fair, nds engine work, no reverse, \$250, Rodger, 247-3018
- '75 TOYOTA CELICA LIMITED, 4cyl, 4spd, new radials, exhaust, 30Kmi, 27-33mpg, \$2500, B/O, Randy, 225-4781
- '72 DATSUN PL510 SEDAN, auto, 4dr, AM/FM, \$800, Tom, 276-9424
- '72 BUICK SKYLARK, 2dr, hardtop, auto, PS, reg gas, runs well, nds tires, \$500, B/O, Nancy, 223-5408
- '81 DATSUN 200SX, 5spd, AC, cass/stereo, velour int, deluxe pkg, all extras, \$7000, Maria, 276-9748
- '79 CHEVY CAPRICE CLASS, 4dr, small V8, AC, cruise cntrl, new radials, exc cond, \$4700, Carol, 223-5139
- '79 TOYOTA CELICA, 5spd, 34mpg, rear defog, AM/FM, custom whls, exc cond, \$4995, Steven, 223-2598
- '77 CHEVY SIERRA PICKUP, auto, 4 whl drive, PS, new paint job, AM/FM, radials, \$3500, Bill, 231-7066
- '78 FIAT, 4spd, 4 new Michelins, reg gas, exc mech, blue, may nd body work, \$1800, Cynthia, 249-4026
- '76 VW BUS, 7 passenger, 4spd, 82Kmi, FM radio w/rear spkrs, NADA whlsie price: \$2800, Dan, 226-7151
- '77 NOVA, auto, PS, mtd snows, 54Kmi, AM/FM, rebilt carb & transmission, B/O, Miriam, 247-2831
- '80 CHEVY MONZA, 43Kmi, 4spd, AM/FM, rear defog, orig owner, exc cond, \$3900, Barbara, 251-1444
- '80 VW SCIROCCO, 5spd, 35mpg, AM/FM cass, exc cond, \$6300, Duane, 251-1243
- '74 DODGE CHARGER, 318 V-8, 75Kmi, PS, PB, rear defog, vinyl top, many new parts, \$1000, B/O, Paul, 279-5328
- '78 LE CAR, 42Kmi, std trans, AC, AM/FM, \$2500, B/O, Clem, 223-8010
- '79 FORD E150 VAN, short bed, hvy duty everything, 50Kmi, capt's chairs, exc cond, \$4500, Walter, 223-9242
- DATSUN 240Z, AM/FM, CB, radials, gd working cond, cust interior, some rust, \$1200, B/O, Gloria, 485-7734 days
- '73 VW SUPERBEETLE, semi-auto, sunrf, nds some work, \$800, B/O, Rozanna, 223-6922
- '74 MUSTANG II, 4cyl, 4spd, 4 gd tires, new radiator, runs well, nds body work, \$500, Al, 279-5306
- '76 BUICK SKYHAWK, V6, rebilt eng, new carb, tune-up, nds work, blue, \$800, Cathy, 247-2910
- '80 CHEVY CITATION, 4dr hatchback, auto, V-6, AC, PS, PB, rear defog, many extras, \$5500, Vladimir, 225-4805
- '76 DODGE ASPEN-SE, 4dr, V8, auto, PS, PB, AC, AM/FM, rust-proofed, exc cond, \$2500, Mark, 288-6561
- '69 CHEVY NOVA, white, 77Kmi, 4cyl, new ignition parts, classic, gd cond, \$600, B/O, Doris, 223-4304
- '76 CHEVY VEGA HATCHBACK, 44Kmi, gd transportation, dk green, book value: \$1500, \$1400, Lori, 223-2139
- '73 MGB ROADSTER, 68Kmi, vy gd cond, \$2500, Rick, 221-5355
- '70 MERCEDES 280SE, AC, PS, PB, 95Kmi, wood dash, dk green, well maint, must see, \$6000, Maryjane, 224-2210
- '75 HONDA CIVIC, runs, body nds work, gd for parts or around town if fixed, \$250, Michael, 223-6967
- '1983" VW BEETLE, 100% restored, no rust or dirt, new car at used car price, \$3500, Mike, 231-4838
- '82 MAZDA RX-7 GS, 5spd, sunrf, rear defog, 4 spkrs, alum whls, 25mpg, exc cond, \$11,000, B/O, Ken, 231-7456
- '73 SATELLITE SEBRING COUPE, '78 V8 eng, AC, PS, PB, PW, rebilt trans, new radials, \$1200, Bill, 223-2394
- '73 FORD GRAN TORINO, 74Kmi, 4new radials, rebilt eng & transmission, \$1200, B/O, Mary, 223-3226
- '80 CITATION, 4cyl, 4spd, 50Kmi, 30+ mpg, deluxe interior, Lee, 223-7083
- '78 FIREBIRD FORMULA, V8, 15Kmi, 4spd, T-roof, yellow/blk int, garaged, new snows, \$6500, Kathy, 223-7171
- '78 PONTIAC SUNBIRD, 31Kmi, 30mpg, 4cyl, 4spd, sunrf, AM/FM, rear defog, radials, \$3990, B/O, Lora, 276-9668
- '74 VW SUPERBEETLE, runs well, AM/FM cass, snow tires, some rust, \$1350, Jim, 223-5514
- '80 FIREBIRD FORMULA, 20Kmi, auto, AM/FM cass, blue/blk int, T-roof, exc cond, \$7500, Rick, 223-2228
- '75 DATSUN 280Z, 4spd, AM/FM, new paint & battery, must be seen, \$3695, B/O, Joe, 257-1236
- '70 BMW 2800 CS COUPE, 89Kmi, metallic blue, tan leather int, mint cond, B/O, Paul, 231-6547
- '72 FORD PICK-UP TRUCK, 360 F250 3/4 ton, PS, PB, \$800, John, 282-2214
- '76 TOYOTA COROLLA, 4dr, extra tires, \$2250, Nancy, 223-6731
- '81 CAMARO, small V8, AM/FM, tilt whl, Chapman lock, blue/navy int, rally whls, \$7200, Tom, 272-3696
- '78 RENAULT LE CAR, 52Kmi, sunrf, cass, gd tires, new battery, damage right side, \$1850, B/O, Joe, 231-5027
- '79 CHEVY PICK-UP TRUCK, Scottsdale, 43Kmi, lt blue, mint cond in + out, \$5000, Natalia, 234-4362
- '73 TR6, 48Kmi, mallard green, new tires, muffler, paint, 3 covers, \$6850, Susan, 276-9978
- '78 1/2 TON CHEVY PICK-UP, Fleetside, 6cyl, PS, PB, cap, AM/FM, new brakes, \$3900, B/O, Carole, 225-4224
- '77 FORD GRANADA, 2dr, auto, AM/FM cass, 4new radials, 54Kmi, spare rims, parts, \$2850, Debbie, 251-1258

## CARS continued

'74 OLDS OMEGA, 74Kmi, auto, PS, one rusted fender, inspected, \$1000, B/O, Bill, 223-8151

'78 BMW 320i, auto, alloy wls, AC, AM/FM cass, 63Kmi, \$8495, Lorraine, 223-4040

'79 VW Dasher, 70K hiway miles, AM/FM, radials, no rust, velour int, exc cond, \$4800, Robin, 231-4438

'71 VW WAGON, gd for parts, rebilt eng w/30Kmi, \$250, B/O, Robert, 276-9072

'79 CAPRI, hatchback, 6cyl, 24Kmi, auto, radials, factory sunrf, AM/FM, dig clock, \$4900, Matt, 247-2336

'78 CHEVY NOVA, 6cyl, auto, PS, PB, 48Kmi, Bob, 225-4169

GRIFFITH 400, #10 of 59 built, 289 Cobra, 1 owner, mech great, nds cosmetics, \$8000, B/O, Jack, 223-5574

'73 PLYMOUTH SATELLITE, 4dr, auto, PS, runs well, gd rubber, some rust, \$350, B/O, Mike, 223-2899

'82 SAAB 900S, 5spd, 2dr, silver gray, sunrf, 7Kmi, stereo cass, immaculate, \$11,750, Richard, 276-9249

'73 CHEVY IMPALA, 4dr, one owner, runs gd, some rust, stl bltd tires, hi mileage, \$450, Harvey, 223-2215

'71 VW BEETLE, extremely well maint by 1 mechanic, one owner, exc cond, \$1500, Denise, 249-4604

'76 ASPEN STATION WAGON, special edition, AM/FM, rf racks, new repairs, \$950, Lyn, 225-6708

'78 DATSUN B210 GX, hatchback, 5spd, 38-45mpg, AM/FM cass, 2 new snow tires, \$3600, B/O, Deborah, 249-1739

'73 VW BUG, rebilt eng w/low miles, new body/floors, 4 new tires, AM/FM cass, \$1990, B/O, Tany, 223-4474

'78 RANCHARO 500, stereo, radials, AC, full power, more, exc cond, B/O, Diane, 258-4214

'71 SUPERBEETLE, one owner, 100Kmi, Michelins, rust, \$500, John, 223-6355

'75 SUBARU GF, hardtop, auto, new exhaust, shocks, brakes, gd mileage, \$1600, Marie, 225-4886

'77 PONTIAC GRAND PRIX, auto, PS, PB, PW, AC, AM/FM, 40Kmi, exceptional cond, \$3900, Dinesh, 231-6271

'80 VW Dasher, diesel, 4dr, 4spd, 40mpg, AC, AM/FM, \$4950, B/O, Bruce, 278-4441

'73 VOLKSWAGON BEETLE, \$1300, B/O, Maddy, 225-4785

'78 PLYMOUTH HORIZON, 4spd, AM/FM, rear defog, tinted windshld, white walls, \$3200, Marcia, 223-3851

'81 CAMARO Z28, auto, T-roof, Chapman locks, 10Kmi, \$8500, Judy, 289-6234

'73 VW SUPER BEETLE, 4spd, radio, gd tires, new muffler, \$1095, Lesley, 249-4042

'77 FIAT X-19, convertible hardtop, mid-engine, 2 seater, green, 60Kmi, gd cond, \$3000, Jim, 234-4621

'72 PLYMOUTH DUSTER, rebilt slant-6 eng, runs gd, 4 new tires, AM/FM 8-track, \$800, B/O, Windy, 234-4584

'80 DATSUN 280ZX, GL package, black w/red int, low mileage, exc cond, \$10,000, Janet, 289-1625

'75 VW RABBIT, 4spd, AM/FM, AC, 92Kmi, radial tires, exc cond, \$1700, B/O, Debi, 234-4695

'77 VOLARE, slant 6, PS, AC, AM/FM, cruise cntrl, rear defog, exc cond, \$2495, B/O, Rebecca, 231-6693

'77 DODGE ASPEN, 4dr, auto, PS, PB, new tires, exc cond, 18+mpg, \$3600, Fran, 231-5314

'67 CHEVELLE MALIBU, 6cyl auto, rebilt engine + transmission, \$475, Don, 233-2243

## FURNITURE

SOFA, 6 mos old, large, beige and browns, \$400, Linda, 225-4134

TABLE LAMP, walnut + brass, off-white shade, exc cond, \$25, B/O, Robert, 231-4231

DOUBLE BED, w/metal frame, \$50, B/O, David, 223-1280

MEDITERRANEAN BEDRM, mahogany, armoire, trpl drsr, 2 mirrors, nght std, hdboard, \$750, Polly, 223-5195

FILING CABINET, 4 drawers, 56"x 24" x 14", \$50, Mark, 249-1719

WOODEN CHAIR, Shaker design, straight-back, cherry, vy new, perfect cond, \$65, Jack, 223-6900

ANTIQUÉ DINING RM SET, 1928, glass top table, 6 chairs, lg buffet, small server, \$800, Jean, 234-5098

POOL TABLE, great Xmas gift, 4'x8' slate table, drop pockets, \$500, 2 girls bikes, Joe, 241-2637

SOFA SET, 3pc, dark mustard color, gd cond, \$75, Sunil, 223-2742

DINING RM SET, rectangle table, 2 arm chairs, 4 side chairs, srvr, buffet, hutch, \$2800, Stanford, 224-2360

BEAN BAG CHAIR, extra lrg, heavy duty, black vinyl, \$30, Carol, 276-9575

DINING RM TABLE, dark wood, round, w/4 chairs, black vinyl seats, extra leaf, sturdy, \$175, Donna, 223-2571

DESK & CHAIR, dbl pedestal, lockable, metal desk, w/ wooden swivel chair, \$150, B/O, Adele, 231-7522

FORMICA TABLE, simulated butcher block, chrome legs, 40" round, \$25, Robin, 249-4692

FOAM COUCH, folds out, herculon weave, brown & gold, gd cond, \$50, B/O, Chuck, 251-1680

BUFFET & HUTCH, birch hrdwd, 3drs, 3drawers, 19x48x38, top hutch, 3shelves, \$550, B/O, Bill, 223-8345

CHAIRS(3), Smith&Watson, NYC, 1pr, Bank of England, \$700, gooseneck armchair, \$400, Chris, 225-6032

KUSS WATER BED, queen sz, dark oak frame, 1yr old, bedding included, \$500, Sharon, 231-6001

DINING RM SET, maple, colonial, drop-leaf table, 2 arm, 4 side chairs, hutch, leafs, \$850, Sharon, 223-2846

BEDROOM SET, full sz, posturpedic mattress, triple drsr, mirror, mens bureau, \$350, Larry, 225-6040

BAR & BAR STOOLS, 5'bar, vinyl arm rail, 2 high vinyl bar stools, perf cond, \$100, Lenny, 234-4831

DOUBLE BED, w/frame, maple hdboard, vy firm mattress, bxspring, \$150, B/O, Brenda, 278-4300

COFFEE & END TABLE, walnut finish, \$100 for both, Michelle, 231-6406

SOFA, 2 piece sectional, 9'x9', green, \$500, Dick, 223-6501

SOFA BED, full sz, black vinyl, like new, \$75, Grace, 223-4468

DINING RM SET, pine, 6'trestle table, 2benches, 2 capt's chairs, triple hutch, \$600, Donna, 223-2498

WATERBED, queen sz, no wooden frame needed, heater, 3 sets of sheets, \$225, B/O, Carolyn, 223-9078

SOFA & CHAIR, solid birch, colonial style, green upholstery, vy gd cond, \$250, Ray, 273-3179

## LOST &amp; FOUND

LOST: SUNGLASSES, Canobie Lake, 10/2, Jauch & Lomb, Tom, 225-4562

LOST: RED SWEATER, Canobie Lake, 9/25, buttons down front, Jane, 223-6493

LOST: GOLD RUBY RING, Canobie Lake, 10/10, reward, grt sentimental value, ask others, Andrea, 251-1463

## MISCELLANEOUS

BEN FRANKLIN STOVE, exc cond, \$150, Charlene, 223-5411

SNOW TIRES(2), Sears Tractionex XST D78-14, on rims, less than 1500mi, \$60, Bill, 231-7037

TURNTABLE, Panasonic, wood grain, like new, \$20, Alan, 247-2101

FIREWOOD, 4ft lengths, 6-12" diameter, 1mo old, 2 cord minimum, delivered, \$85/cord, Bruce, 231-4046

TELETYPE RO PRINTER, connects to most home computers, good toy for tinkers, \$15, Ava, 225-4253

SNOW TIRES(2), Cooper, F78-14, on rims to fit Plymouth Volare, used 1 seas, \$70, Bill, 231-5303

CONSOLE STEREO, 6', \$50, folding bar, \$10, Springer, 223-7879

TIRES(4), 11-15 LT on white spoke whls, fits Fo drums, 8-lug, \$150, Gloria, 223-6454

SATIN WEDDING GOWN, handmade, never worn, lace, long train, extra material, \$230, Cheryl, 279-5709

SNOW BLOWER, '78 Ariens 7 HP, w/tire chains, exc cond, \$550, William, 247-2246

AMPLIFIER, mid 60's Fender Bassman guitar amp, w/2 electrovoice spkrs, \$300, B/O, Denise, 234-4402

TIRES(5), Goodyear Tracker A-T, 9-15 LT, mtd on wht western Jeep whls, 10Kmi, \$500, Rosemary, 234-4310

TELEVISION, Zenith portable, 8" screen, nds work, \$25, Carrie, 225-6373

GAS PARLOR STOVE, 50,000 BTU, exc cond, \$90, Kathy, 225-5688

OLD BASEBALL CARD COLLECTION, many rare cards, valuable, goes to best offer, Jack, 223-6900

ZX81 PERSONAL COMPUTER, Sinclair, 16K of additional memory, used 1 wk, \$145, Walt, 223-9184

WINCHESTER DISK DRIVE, 8mb, Shugart SA1000, new, \$1600, Lance, 223-7864

SOUND SYSTEM MIXING BOARD, Peavey XR800, 8-chnl, 200 watts, \$475, 3 Peavey mikes, \$400ea, Rodger, 247-3018

WHITE TAP SHOES, sz6, ladies, GIRL'S BIKE, 24", green, WHITE FIGURE SKATES, sz3, girls, Bette, 234-4960

COLOR TV, 25" diag, Philco solid state, Philcomatic III, exc cond, \$300, Molly, 223-4654

WOOD STOVE, Jotul 118, airtight, green enamel, \$450, Bill, 279-5203

CAR STEREO, Sanyo, AM-FM cassette, in-dash, spkr: \$70, Jack, 279-5482

POTTER'S WHEEL, \$100, ceramic kiln, \$500, CANNONBALL SINGLE BEDS(2), \$100ea, Pam, 247-2872

CAMERA, Chinon 110 pocket camera, auto winder, blt-in flash, \$25, Nancy, 223-3533

10 BAND RADIO, AM/FM, marine, German made, stations worldwide, \$550, 40 chnl CB, \$45, Antonio, 251-1733

TYPEWRITER, Royal manual, has new platen, \$45, Terry, 225-6017

XL40 DISTRIBUTED PROCESSING SYS, 4terminals, prntr, tape drive, 65K, lease take-over, Ellen, 223-8391

PENTAX ME CAMERA, auto exposure camera, w/80-210mm zoom lens, \$125, Dave, 223-4794

GOTTLEIB PINBALL MACHINE, "Atlantis", full sz w/exc flipper action, perf cond, \$375, Stephen, 283-6226

OLYMPUS OM-10, 50+135 lenses, flash, tripod, leather bag, many extras, exc cond, \$250, B/O, John, 251-1296

FIREPLACE DOORS/HEAT EXCHANGER, glass, Sears, 38"Hx29"H, exc cond, orig \$280, \$125, Lawrence, 272-3603

DRUM SET, Fibes, 5pcs, 3 cymbals w/stands, tinted green, w/drum cases, exc cond, Teresa, 276-9021

BLAUPUNKT CASSETTE STEREO, AM/FM, Dolby, FM muting, preset tuning, auto-reverse, \$200, Johnny, 223-3464

SWIMMING POOL, 18', above-grnd, w/filter, ladder, cover, accessories, like new, \$400, Mike, 269-2122

LADIES WATCH, Longine Whitnaur, 17 jewels, gold, vy delicate, Swiss movement, new, \$50, Lori, 272-3669

SNOW TIRES(2), for Datsun B210, gd cond, \$25/pr, Karen, 231-5377

MEN'S THINSULATE JACKET, medium, rust, waist-length, never worn, orig \$87, \$60 firm, Kenneth, 276-9360

ATARI VIDEO GAME, includes 9 cartridges, exc cond, \$240, Don, 223-3276

HP41C, 82104A card reader, w/cards, \$150, 82143A printer, \$250, Pete, 292-2175

PLYMOUTH COAL CHUBBY, '80, w/blower attached, approx 1/4 ton w/stove, exc cond, \$400, B/O, Kathy, 247-2450

HARVARD BEDS(2), w/frames, \$50 ea, fishtank + stand, 20 gal, \$45, exercise bike, \$65, Charles, 225-6010

JEWELRY, 45 pc service for 8, chocolate w/gold + amber flowers, brand new, \$30, Kate, 247-2683

WOOD STOVE, Fisher Grand Ma Bear wood burning stove, \$400, Sharon, 223-2846

SNOW TIRES, Continental steel radials, 185/70 SR14, used 2 seasons, \$50, Wayne, 273-3050

BURGLAR ALARM, \$300, B/O, motion detector, \$100, B/O, mahogany wicker chair, \$50, B/O, Arnetta, 231-7183

TEMPWOOD WOODSTOVE, 55,000 BTU/hr, too lg for small house, downdraft principle, \$175, Mark, 289-1259

RIMS & TIRES(2), Cougar XR-7 gold whls, mtd GR78-15 Firestone 721 steel radials, \$99, Donald, 231-6068

TYPEWRITERS(2), IBM Selectric, \$400, Smith-Corona Enterprise, portable, w/case, \$180, Michele, 223-7754

RUSSO COAL-WOOD STOVE #2, w/blower, heats up to 15,000 cu ft, works great, \$625, John, 223-8282

'78 WHEEL HORSE TRACTOR, 1 cylinder, 8spd, front loader, B/O, Lynne, 223-8928

SNOW TIRES, A78-13 mtd on '74 Datsun 4-lug rims, \$20, Doug, 223-2513

NIKON FE, 35mm SLR, w/50mm f1.8 lens, carrying case, brand new, never used, full warr, \$325, Bea, 259-3883

ATARI GAMES, Yar's Revenge, Grand Prix, \$19 ea, both \$35, Laserblast, Golf, \$15 ea, both \$25, Sonia, 234-4284

RADIALS(2), 215/75 R15 all season "Vista", balanced on Ford rims, only 4Kmi, \$150, Jan, 279-5372

BOOKSHELF SPEAKERS, 8" woofer + Philipps tweeter, walnut cabinet, orig \$200, \$100/pr, Fred, 247-2248

'S LEATHER COAT, 3/4 length, zip-out lining, exc cond, \$60, Steve, 223-6660

"JEANS THAT FIT", navy+kokhi, polyester slacks, various colors, dresses, sz 14 + up, Grace, 231-7732

BOSTON SYMPHONY TICKETS, 2 tickets, each concert, Saturday evenings, \$14 ea, Elaine, 258-4124

SNOW TIRES(2), VW studded snows, mtd, gd cond, \$30, B/O, Joe, 223-7918

WOODSTOVE, Leyden Husky, insert for frplc, electric blower, 1yr old, \$550, Linda, 231-6747

COMBINATION WINDOWS(18), white aluminum, colonial, 32"x39", one 36"x39", \$15 ea, Sharon, 223-2846

TIRES, B78-13, used 3 days, almost new, \$50, Jack, 236-2603

CONSOLE STEREO, Zenith, walnut, AM/FM stereo radio, like new, \$150, B/O, Marie, 223-8981

TIRES & RIMS(2), GR78-14 steel bltd radials on 4 hole '72 Maverick whls, \$20/pr, Richard, 289-6043

VINTAGE RADIOS, Atwater Kent model 46 w/F2 spkr, \$75, Thompson Neutrodyne, \$95, Gary, 231-6629

WOODSTOVE, lg cast iron stove, 30" logs, not airtight, gd cond, \$250, B/O, Scott, 223-8098

JOHN DEERE SNOWBLOWER, attaches to tractor, sells new for \$750, \$550, B/O, Maryann, 223-2114

DIAMOND RING, sz 6, solitaire 1/3 carat, oval cut, gold 6-prong setting, \$500, Marlene, 247-2122

CELLO, 3/4 sz, bow, case, gd tone & cond, \$650, Mic, 231-7195

TAR, Ecco-Ranger 12-string acoustic, blt-in electric pick-up, case, \$150, B/O, Tracey, 231-6703

WOMEN'S JACKET, fitted black leather, red leather trim, sz 6-7, lined, was \$200, \$90, Catherine, 223-3776

TV, 19" B & W, Panasonic, 2yrs old, new cond, \$75, B/O, Jeff, 225-4090

WEDDING GOWN, veil, train, sz 12, empire waist, long sleeve, pale pink border, \$70, Connie, 258-4216

TRUCK CAP, fits 4cyl Chevy Luv, red + white, nds some work, \$125, B/O, Adele, 231-7522

GOODYEAR TIRES(5), LT10-15 AT Trackers, sport rally rims, fits all Blazers, negotiable, Dan, 234-4040

COLOR TV, 19" Sylvania, 6yrs old, exc cond, \$85, Fred, 225-5823

DATSUN REPAIR MANUAL, for '77 B210, dealer shop manual, \$10, Mark, 231-6755

CAMERA, G.A.F. Super 8 camera, w/case, gd to exc cond, \$35, Arnold, 231-4004

WOMEN'S LEATHER JACKET, waist length, sz 11, neutral color, great cond, \$65, Cindi, 223-9481

TIRES(4), Uniroyal radials, FR78-15, white walls, 2 gd cond: \$25 ea, 2 O.K. cond: \$15 ea, Kathy, 223-9250

COLOR TV, RCA console, \$150, chair, \$20, Marey, 234-4027

DESIGNER WEDDING GOWN, sz 7, white taffeta, cathedral train, exc cond, \$350, B/O, Carl, 231-4452

WINE PRESS, small cast iron & lrger unit w/wood side, Fred, 234-4790

WOMEN'S COAT, tan cashmere, sz 16-18, \$75, Fran, 223-4722

SCREEN HOUSE, gd cond, used only 2 seasons, B/O, Paul, 275-6164

CAR STEREO, 60 watts, 6 chnl, Mitsubishi, graphic equalizer/amp, orig warr, \$130, John, 283-6300

SNOW TIRES(2), Sears Dynaglass Belted, F78-14, used only 3mos, exc cond, \$75, B/O, Peter, 247-2282

PORTABLE TYPEWRITER, Olivetti-Underwood, exc cond, w/case, \$40, Bill, 232-2476

RABBIT FUR COAT, short jacket, w/hood, light golden color, sz sm, \$150, B/O, Sharon, 221-5471

SNOW TIRES, 155/80 D13 w/rims, only 2Kmi, good for Datsun, Toyota, etc, \$60, Boris, 223-3951

MINOLTA XG2, auto 35mm SLR, w/f1.7 lens, auto 200x flash, case, manual, \$200, Ken, 223-3265

CALCULATOR, TI-58, programmable, SW module, AC adaptor & manuals inc, \$50, B/O, Frank, 232-2571

LEATHER WALLETS, St. Thomas, Anne Klein, women's wallets, key cases, eyeglass cases, Diane, 231-2232

BUNDY FLUTE, complete overhaul in '81, w/case, gd cond, \$150, Eileen, 251-1927

## MOTORCYCLES

'75 HONDA XL350, dirt/trail bike, \$450, Julia, 251-1556

'81 YAMAHA 400 SPECIAL, new in May '82, 1800 miles, black, exc cond, \$1200, Anne, 225-5627

'78 HONDA 750/FOUR, 6Kmi, luggage rack, backrest, exc cond, \$1700, B/O, Dave, 276-9057

'78 SUZUKI GS750C, Conti tires, just tuned, oil change every 1000 miles, \$1600, B/O, Janet, 289-6071

'81 SUZUKI GS550, 4cyl, less than 3Kmi, lugg rack, sissy bar, safety bar, \$1400 firm, Theodora, 277-7077

'78 HONDA 400 HAWK, auto, 1800mi, fully dressed, side bags, fairing, trunk, \$1200, B/O, Vincent, 235-3346

'78 KAWASAKI KZ1000 LTD, mag wheels, disc brakes, 9K mi, gd cond, \$1750, Robert, 221-5327

## PETS

GRAY THOROUGHBRED GELDING, 16.1, 9yrs, reg w/papers, gd home a must, \$800, B/O, Chris, 231-6161

SIAMSE KITTENS, sealpoint, great house pets, avail Nov. 7, \$50 ea, \$90/pr, Ken, 229-6330

HUSKY/SHEPARD, free to gd home, all shots, 10 mos old, Fred, 223-5793

FREE KITTENS, black, furry, will be available in 3 weeks, Karen, 223-7339

## REAL ESTATE

ACTON, townhouse condo, 2bdm, frplc/stove, pool, tennis, full bsmt, many extras, \$76.9K, Betay, 231-2148

ACTON, condo, 2bdm, 2bath, balc, central AC/heat, new crptng, fully appl kitchen, \$59.9K, Jeanne, 223-8337

SANDWICH, corner lot, acre +, nicely treed, level, 2 miles from Mid-Cape Hi-way, \$13.9K, Marie, 223-4566

NAGOG WOODS, townhouse condo, 2bdm, frplc, AC, patio, W/W crptng, lrg master bdrm, \$80K, Shelley, 274-6740

MAYNARD, 7rm colonial, 4bdms up, 1st floor LR, DR, kitchen, .2 miles to ML, \$62K, Sue, 289-1064

TEWKSBURY, 6rm cape, finished bsmt, porch, pool, 1/4 acre, ceramic tile bath, \$67K, Steve, 223-6660

MAYNARD, 9rm Victorian style house, 4-5bdm, 1/2 mi to ML, nice yard, 75yrs old, low 70's, Jane, 289-1068

ACTON, townhouse condo, 2bdm, Drummer Farms, work, rec & wash rms, appliances, \$81.9K, Doug, 234-4413

SHREWSBURY, 1 bdrm ranch, starter home, many extras, \$45K, Marie, 231-6211

TOWNHOUSE CONDO, 2bdm, 1 1/2 bath, part furn, patio, awning, attic, pool, tennis, low 50's, Linda, 247-2834

ASHBURNHAM, 1.7 acres, dead-end st, beach rights to Lake Watatic, perkable, \$6K firm, Fred, 288-6834

LINCOLN, MA, condo, Farrar Pond Village, 2bdm, 2bath, cellar, frplc LR, garden, 6figures, Bill, 276-9752

WORCESTER, off 290, 3bdm, frplc, lrg kitch, full bsmt, possible take-over, \$57.9K, Armando, 225-5103

BARRE, ME, land, 8.7 wooded acres, some financing, \$9600, Ron, 279-5205

NAGOG WOODS, 2bdm, 1 1/2 bath, cathedral ceiling, LR, DR, kitch, 1400+ sq ft, \$78K, Michael, 234-4318

FRANKLIN, MA, 4bdm gambrel, 1 acre, frplc LR, country kitch, DR, full bsmt, gas ht, \$76.9K, Bill, 283-6274

ACTON, townhouse condo, 6rm, 2bdm, 1 1/2 bath, patio, bsmt, pool, tennis, \$68.7K, Jim, 249-4480

HADISON, NH, building lot, 3/4 acre, top of hill, grt view, electricity, water, roads, \$11.5K, Leon, 236-2355

NEW IPSWICH, NH, land, 6.3 wooded acres, \$15K, Nancy, 231-5048

FRAMINGHAM, 3bdm multilevel, enc porch, frplc LR, fam rm, gas FHW, extras, \$86K, Ron, 223-5362

W. FITCHBURG, 7rm cape, dbl corner lot, 4bdm, fam rm, close to Rtes. 2, 12, 140, \$52.9K, Mark, 283-6278

PEPPERELL, 3bdm ranch, wd stove, wrkshop, lrg yard, in exc cond, \$49.9K, Rick, 223-1240

GARDNER, MA, 7rm colonial, 3bdm, 2car gar, sun porch, full cellar, LR, DR, new kitch, \$38.9K, Joe, 245-5317

WESTBORO, MA, 5rm ranch, 2bdm, attached garage, coal stove, \$55K, Cheryl, 231-5780

MARLBORO, 3bdm twmhse duplex, frplc, eat-in kitch, LR, DR, full bsmt, deck, balc, \$68.9K, Will, 225-4316

LAKE WINNIPESAUKEE, contemp cape, 5rms w/loft, 4yrs old, 2 acres, beach access, \$56.5K, Dianne, 247-2583

## RECREATIONAL VEHICLES

SAILING PRAM, 8', fiberglass + wood, to sail or use as a tender, \$600, B/O, Alane, 225-5507

'80 WILDERNESS TRAVEL TRAILER, 24', self-contained, exc cond, Heidi, 278-4247

'76 COACHMAN MOTOR HOME, 23', PS, PB, Dodge 360 eng, reg gas, roof AC, 28Kmi, slps 5, \$12K, Bob, 278-4057

23' BAYLINER NISQUALLY, 225 HP Volvo, I/O, VHF, dual stations, 2 CBs, many extras, \$13.9K, Joe, 225-4222

GLASSMASTER CUDDY CABIN CRUISER, 18', head & sink, slps 2, 80HP Merc, trailer, \$3000 firm, Cheryl, 223-9833

SAILBOAT, '74 Pearson, 30', Woods Hole, half owner-ship: \$13K, Tom, 223-8109

**REC. VEHICLES continued**

'82 SILVERLINE RUNABOUT, 19.5', 228 HP Merc, Cuddy cabin, vee berth, extras, \$12K, Eileen, 279-5724

'79 GALAXY TRIHULL, 16', 50 HP Merc, trailer, covers included, options, \$4K, Steve, 225-5436

3'DAY SAILBOAT, 22', 9.9 Evinrude, slps 4, stove, new hood jib, genoa, spinnaker, \$6.5K, Peter, 231-2138

17' COLUMBIAN I/O, w/120HP OHC motor, boat gd shape, motor exc, EZ load trailer, \$3K, Mike, 292-2110

**RENTALS**

ROOM, Boylston, off 140, off-st prkng, non-smoker, kitch privileges, \$40/wk, Nonie, 234-4327

HOUSE, Ayer, 7rm ranch, unfurn, frplc, porch, bordering pond, dshwshr, avail Nov, \$520+utils, Paul, 288-6739

SKI CONDO, Waterville Valley, 3brdm, 2bath, slps 9, seasonal, \$5K, negotiable, Dan, 223-2643

HOUSE, Lake Boon, Hudson, MA, 2brdm, frplc LR, newly renov, \$600/mo, no pets, Jane, 231-6905

HOUSE, Clinton, antique cape, 6+rms, 2-3brdm, central heat, 2frplcs, 3acres, \$575/mo, Alyson, 231-5952

HOUSE, Pepperell, MA, 3brdm, frplc LR, DR w/sliders to deck, wdstove, lg lot, \$750/mo, no pets, Jane, 221-5517

HOUSE, Littleton, 8rm, near 495, swim & ice skate, nicely decorated, \$600 + utils, Ed, 253-4159

APT, Acton, 1brdm, W/W crptng, balc, pool, dshwshr, tennis, \$495 incl heat/hot water, Janice, 241-2751

BOX STALLS, 2 lrg paddocks, Littleton, includes feeding, cleaning, comp care, \$130/mo, Lynn, 288-6852

APT, in home, Londonderry South, NH, 4rm, 1brdm, fully paneled, W/W, \$350 includes utils, Ann, 223-4910

VISTANA VILLA, 5 mins to Disney World, 2brdm, slps 6, 2bath, DR, LR, kitch, \$600/wk, Ken, 231-7523

TOWNHOUSE, N. Conway, 3brdm, 2bath, open LR w/frplc, laundry, X-entry, major ski areas, Barrrie, 231-5412

APT, in Marlboro colonial, 4rms, 1brdm, gd neighborhood, \$450 includes utils, Chuck, 251-6415

APT, duplex in Concord, 7rms, 3brdm, big yard, quiet neighborhood, \$750 + utils, Karen, 223-7339

VACATION HOME, N. Conway, 5brdm, 3bath, near center, fully equipped, Teri, 223-7367

RESORT CONDO, Laconia, 1brdm, full bath, all utils, TV, wk of 10/29-11/5, \$280, Stephen, 281-5733

SPLIT ENTRY, Shrewsbury, 7rm, 3brdm, 2car gar, lg sun deck, green hse, fam rm, \$630/mo, Tom, 225-4944

CONDO, 10mins to Palm Beach, htd pool, beaches, golf, tennis, 1brdm, \$750/mo, George, 276-9876

SKI HOUSE, Conway, NH, read the rest, rent the best, for less, more info, Jan, 225-5905

CONDO, Killington, 4brdm, 4bath, frplc, 1 1/2ai from base, mid-wk, wkends, Claire, 228-2098

APT, 2brdm, Imperial Apts, Shrewsbury, Rte 9, pool, tennis, modern, \$410, Paula, 223-3283

SKI CHALET, Killington, 2mins from access rd, avail Sunday-Friday, \$300-400, Emil, 223-4749

**ROOMMATES**

ROOMMATE, condo, Framingham area, 2brdm, gar, patio, tennis, \$275+, avail Nov 1, Elaine, 223-9318

HOUSEMATE, F, non-smoker, 26-35yrs old, Methuen, near I93, \$265 + 1/2 utils, Velvet, 247-2288

ROOMMATE, 2brdm Acton apt, \$265 includes utils, AC, pool, balc, tennis, Steve, 223-6268

HOUSEMATE, F, Harvard, 2brdm contemp, pref non-smoker, fully furn, \$300 + 1/2 utils, Marie, 223-8981

HOUSEMATE, F, non-smoker, Sterling, 3brdm, 2 LR, \$250 includes utils, no pets, Judith, 223-1278

HOUSEMATE, 8rm home in Acton, desirable location, \$275 + 1/3 utils, refs, Marilyn, 223-4960

HOUSEMATE, M/F, 4brdm home, close to Exit 6, Nashua, \$250 + utils, Jack, 276-9796

HOUSEMATES, M/F, share house in Hopkinton, no pets, non-smoker, by Nov 15, Peg, 231-5158

HOUSEMATE, Bellingham, MA, ranch, lg yard, Rtes. 495+26, \$250 + 1/2 utils, Marlene, 231-7846

ROOMMATE, F, 24-28, find/share 2brdm apt, Waltham/Watertown/Belmont area, Cathy, 276-9506

HOUSEMATES(3), Maynard, 4brdm house, walk to ML, split utils, avail Nov 1, \$140+, Don, 223-8411

HOUSEMATE, M, non-smoker, north Framingham, lrg ranch, \$250 + 1/2 elec/phone, Fred, 278-4206

ROOMMATE, M/F, Leominster, 2brdm apt, close to Rtes. 2 & 190, Nov 1, \$180 + 1/2 elec, Brian, 241-2987

ROOMMATE, 4brdm ranch, Framingham, cable TV, washer-dryer, yard, \$75/wk includes utils, Cynthia, 233-2249

HOUSEMATE, F, 3brdm contemp, rural area, SW Nashua, NH, \$40/wk includes utils, Jane, 249-1774

**SPORTING GOODS**

SKI CLOTHING, men's jacket, bib pants, poplin pull-over, sz 42 or large, \$100, Ken, 223-1837

MEN'S HOCKEY SKATES, CCM Mustang, brand new in '80, sz 8 1/2, \$20, Ann, 223-4910

MUNARI SKI BOOTS, sz 8, \$25, Steve, 223-5222

BICYCLE, 26" 10spd, Ross Grande Tour 11, 1yr old, orig \$175, \$125, Tony, 225-4494

SKIS, Billy the Kid 170s, w/Tyrolia brake binding, poles, Nordica boots, sz 9 1/2, \$225, Gary, 223-9095

SKIS, Head 360s, 190cm, black, edges just sharpened + bottoms waxed, exc cond, \$50, Martha, 288-6606

MEN'S BICYCLE, Columbia, deluxe 10spd, olive green, exc cond, \$50, Virginia, 223-5851

BOY'S SKI BOOTS, Munari, sz 5 1/2, used 1 season, like new, \$25, Tony, 225-4494

EXERCISE CYCLE, Sears, fly whl, caliper brakes, mile counter, timer, vy gd cond, \$90, Rosemary, 223-3152

SKIS, Fischer RC4 Super Comp, 190cm, brand new '8, never mounted, \$200 firm, Marilyn, 223-6138

CUSTOM GYM EQUIPMENT, hvy welded tubing, wide variety, prices vary, Kathy, 223-9250

HUNTING BOW, Bear Super Magnum 48, 27-29" draw, 60lb pull, 8 arrow quiver, \$60, B/O, Tom, 223-2485

SKIS, Dynastar Pulsar, 190cm soft skis, 2 yrs old, gd cond, \$150, Mike, 251-1071

BICYCLE, ladies English 3spd, black, exc cond, \$50, Joan, 223-6265

TENNIS RACQUET, wooden, blue, includes brace, great cond, B/O, Carrie, 225-6373

BICYCLE, Univega Grand Turisimo, 15spd, mixte frame, blue, like new, \$300, Paul, 231-6547

SKI BOOTS, men's, sz 11, orange, vy gd cond, \$30, Chuck, 283-7432

BICYCLE, girl's 20" Schwinn, one spd, blue, gd cond, \$25, Chuck, 251-1680

GOALIE PADS, Cooper goalie pads, exc cond, B/O, Paul, 275-6164

**WANTED**

VW FOR PARTS, dead or dying VW 411, 412, 72 + bus for parts, Fred, 225-4709

APT, 4-5rm, Fitchburg/Leom area, 1st or 2nd floor, reasonable rent, Jan, 241-2080

HOUSE, Falmouth, at least 3brdm, frplc, prefer water-front, reas priced, Sophia, 249-4455

DOLLS, Madame Alexander Int'l doll collection, gd cond, \$35, Miles, 223-4380

SNOWMOBILES(2), late model Artic Cat Jags, exc cond and reas priced, John, 276-9323

SNOWBLOWER, 5 HP, gas, Kathy, 225-5688

ARCHERY EQUIPMENT, recent model compound bow, right handed, 45-55lbs, Ken, 223-7155

JOHN DEERE TRACTOR ATTACHMENTS, snowblower, plow, tiller, wheel chain, weights, Daniel, 278-4237

HARDWOOD, seasoned, cut & split, approx 2cords, will pick-up, can afford \$100/cord, Barbara, 223-1889

PLOW SET-UP, to fit 1979 Dodge, Karen, 223-3396

KITTEN, white female, Tamy, 223-4474

'68 OR '69 PONTIAC GTO, must be in gd cond, Ruth, 223-5240

BASEBALL CARDS, for 10yr old starting collection, Dan, 251-1628

CHILDREN'S SKIS, 100 or 110 cm, boots, sz 1, poles, Bill, 231-6759

MUSICIAN, keyboard/guitar player w/vocals for weddings & gen business, have contacts, Andy, 231-5629

RADIAL SNOW TIRES, size 165R-13, '80 Toyota Corolla, Sharon, 232-2218

DOUBLE TRAILER, for snowmobiles, Mary, 231-6432

NIKORHAT CAMERA, working condition, 3-15yrs old, body only preferred, Gordon, 223-2236

FIREPLACE GRATE, & andirons, also dehumidifier, Mike, 231-7245

PET SITTER, to take care of 1yr old labrador retriever, Dec 24-29, fee negotiable, Paul, 275-6164

30 GAL AQUARIUM, OK if its cracked, needed for guinea pig cage, negotiable, Anne, 231-7580

ANIMAL CARRIER, for small dog or cat, reasonable price, Pamela, 249-4631

**MARKETPLACE PK03-1/K23**

Type or print clearly. Ads are published on a first-come, first-served basis. The full name and 7-digit DTN number is required. Home phone numbers will not be printed.

CATEGORY \_\_\_\_\_

ITEM \_\_\_\_\_

DESCRIPTION \_\_\_\_\_

PRICE \_\_\_\_\_

DTN \_\_\_\_\_ LOCATION-M/S \_\_\_\_\_

NAME \_\_\_\_\_ first last (only 1st names are printed)



# COMPUTER CORNER

The average cost of driving your car to work each day could be as much as 20 cents a mile. Costs taken into account are the price paid for car, taxes, fees, depreciation, insurance, fuel and maintenance for a full-size, six cylinder model with power steering and brakes, air-conditioning and automatic transmission.

A van with the same features and a V-8 engine gets 42 cents per mile. But divide this amount by fourteen vanpooling passengers and each averages three cents per mile.

At Digital, if you work an established shift, live near at least nine other employees and more than 15 miles from your facility, you could start your own vanpool. Or there could already be a route established for you to join.

To start or to join a van, contact the Commuter Transportation Department at DTN 223-7029.

### What it costs to run YOUR car

Average annual cost based on 3 years of ownership

- 1. Actual price paid, including trade-in allowance .....
- Interest on car loan (divide total by 3) .....
- 3. Taxes and fees
  - Sales tax (divide by 3).....
  - Excise/property tax .....
  - Registration .....
  - Title fee (divide by 3).....
  - License (divide fee by number of years valid).....
  - Inspections .....
- 4. Depreciation..... (11.8% full size; 7.7% subcompact) actual price paid X percent
- 5. Insurance, total yearly bill.....
- 6. Total gasoline cost ..... (Determine m.p.g., divide into total annual miles then multiply by the cost of gas)
- 7. Maintenance
  - Tuneups.....
  - Oil, filters, lubes .....
  - Tires .....
  - .....ner .....

For yearly total, add up all lines.

Divide by number of annual miles driven to find cost per mile to run your car.

### VANPOOLS

- To Maynard**
  - From **Burlington** Route 128 area, Jim Byrne DCV #23, 223-4168
  - From **Back Bay, Cambridge**, Tony Sprauve, 223-3578
  - From **Townsend, Groton**, Mike Fortunato DCV #17, 223-4592
  - From **Belmont, Arlington**, Harvey Lijek DCV #68, 223-5059
  - From **Amherst, NH**, Doug Ryder DCV #29, 223-2513
  - From **Methuen, Lawrence, Andover, Tewksbury, Salem, NH** to Acton (ACO), Ken Noyce, 223-3643
  - From **Tyngsboro, Lowell, Chelmsford, Westford** via Route 27, Charles Wellington DCV #14, 223-3570
  - From **Sterling Area, Clinton**, Mike Brown DCV #86, 223-2728
  - From **Boston, Mattapan, Dorchester, Northeastern, Fresh Pond** to Powdermill Road and Mill, John Oliver DCV #112, 223-3509
  - From **E. Pepperell, Groton, Littleton** to Nagog and Maynard, Harry Aikens DCV #16, 223-9435
  - From **Framingham**, Bob Carson DCV #45, 223-3396
  - From **Northboro, Shrewsbury, Westboro, Southboro**, Vic Hamburger DCV #87, 223-8441
  - From **Andover, Tewksbury, Lowell**, Ross Morgan DCV #66, 251-1302
  - From **Brookline, Jamaica Plain**, Chris Pasztor DCV #81, 223-7265 or Marcia Tapia, 223-8503
  - From **Brockton, Canton, Dedham**, Ron Cohen, DCV #106, 223-9859

### To Maynard/Stow

- From **Belmont, Watertown, Waltham, Ed Sypek** DCV #90, 223-4353 or Mark Lohr, 223-7272

### CARPOOLS

- To Maynard**
  - From **Hudson, MA**, Deb Bailey, 223-4249
  - From **Carlisle** to Mill, Sue Wao, 223-8089
  - From **South Shore Plaza, Braintree**, to Mill & Parker Street, Mike O'Donnell, 223-8619
  - From **Medford** to Mill, Marc Warshawsky, 223-3196
  - From **Fitchburg, Leominster**, Paul Niemi, 223-7421
  - From **Brookline**, Ken Der, 223-1981

### To Andover

- From **Newton Lower Falls, Wellesley Hills Area** (Route 9, 16, 128), Bill Costley, 289-1712

### FORMING VANPOOLS

- To Nagog**
  - From **Framingham, Natick, Ashland, Sudbury**, Jean Doherty, 223-5992
  - From **Weymouth Center, Houghton Pond, Canton, St. Bartholomew's Church, Needham**, Harold Wood, 223-5686
- To Andover**
  - From **Newton** and adjacent area, Carl Shine, 289-1478
- To Marlboro/Hudson**
  - From **Arlington** via Route 2, Dick Belmont, 231-4356
- To Marlboro**
  - From **Brockton** via Route 495, Tim Barnes, 278-4697
- To Littleton**
  - From **Nashua, NH**, Ken Chapman, 229-6330
- To E. Concord**
  - From **Leominster, Fitchburg**, Alan Cormier, 251-1244

## DCU improves services through audio response phone system

"Welcome to Digital Credit Union. Please enter your badge number and security code."

An audio response phone system with a computer-generated voice gives DCU members access to the credit union 24 hours a day, seven days a week. "Easy Touch" is convenient to all members by calling a special number using a touch tone phone.

According to Richard Mangone, general manager, phone usage by DCU members is astronomical. In the last quarter, DCU's 14 branches received over 125,000 routine calls for balance information, transfers, withdrawals, all of which could have been handled by Easy Touch.

Every DCU member has been sent a security code along with a special edition of Input/Output explaining how the system works.

Anyone who has not received a security code and instructions should contact their nearest branch office.

## Deadlines for "Digital This Week"

are for submitting articles, notices, photographs and to help you plan events and publicity around certain editions of the paper. The next four issues and deadlines for "Digital This Week" are:

- Nov. 8 issue-Oct. 28 deadline
- Nov. 22 issue-Nov. 11 deadline
- Dec. 13 issue-Dec. 2 deadline
- Dec. 27 issue-Dec. 16 deadline

**High volume mailers** should be aware of the limitations of local mailrooms. Facility mailrooms are not equipped or staffed to handle bulk mailings. Any mailings of over 200 pieces should be routed via the Publishing and Circulation services group in Northboro.

For information on P&CS mailing services, please contact the Mailing specialist at DTN 234-4407.

## Corporate Employee Disbursements

(Petty Cash) departments will be moving back to Parker Street on Oct. 29 and Nov. 1. The new mailstop will be PK03-1/K76. The new general office number will be DTN 223-2444. They will be in full operation on Nov. 1 with no interruption of window service.

The only other change in operations will be that the Parker Street window area will

move to the first floor, pole 13H, as of Nov. 1. Their hours will then be from 9 to 3:30, Monday through Friday.

The time schedule for Petty Cash windows at CF02 and PMR will not change.

**The trial Helicopter shuttle** planned for Maynard to Manhattan has been cancelled in light of current economic conditions. Aviation Services has also discontinued helicopter service between Colorado Springs and the Denver Airport.

## Harvard Community Health Plan's

center in Wellesley has a new local telephone exchange. In the past, all calls were routed through a Waltham exchange, 895-1XXX.

The new exchange is 431-5XXX. All the internal phone extensions, the last three digits, will remain the same. This means the emergency number, which has been 895-1200, will now become 431-5200. And so on.

**The next Bike Club meeting** will be held on Nov. 2 at 7 p.m. in Marlboro's DEC 10/20 Conference Room in MR01. Topic will be: "How to keep your toes (and the rest of you) warm and toasty while riding on frosty days." For more information, please call Kathy Norton at DTN 234-4432.

**The Digital Computer Club** hosted a standing-room-only PDT presentation/workshop last month. More than 100 people came to the club's first meeting to listen to Digital's hardware and software experts, Kevin Porter and Martin Gentry.

The Club's next activity on Oct. 27 will be a PDT Technical Forum. Kevin and Martin will answer questions from PDT owners and users. The meeting will be held in the Mill cafeteria conference room (ML05-4) from 6 to 7:30 p.m. A business meeting will be held after the forum. All employees are invited to attend.

**Tewksbury Telecommunication** has announced the conversion of the TWO facility to Direct Inward Dialing, (DID), as of Nov. 8. Callers outside of Digital DTN locations will be able to dial Tewksbury directly without going through a Digital operator.

The Tewksbury extension will remain the same. To call a Tewksbury number from outside Digital or from a non-DTN location, just dial 617-858 and the four digit extension. For example: Maria Amodio's current number is 851-5071 extension 2449; as of Nov. 8, her DID number will be 858-2449 and DTN 247-2449.

The main listed number will be 617-858-2111.

# Have you flunked the stress test?

## Stress: the body connection

Do you get frequent virus infections? Are you eating too much or have you lost your appetite? Do you frequently experience fatigue for no apparent reason? These are just a few of a wide variety of physical symptoms which often may be stress related. Listen to what your body is telling you and plan to take some action. You deserve to feel good! Attention to the body's physical needs can go a long way toward reducing stress.

Some suggestions include the following:

1. Practice good eating habits. This means "three squares" and balanced nutritional intake. Don't forget breakfast!
2. Exercise regularly. You'll be surprised what it does to your stress level and general sense of well being.
3. Share feelings with other people, good and bad. Don't try to hold it all inside.
4. Take time to be clear about your priorities. Are you willing and able to pay the price?

### Need help with the "whats, whys, hows, wheres, and whens?"

In November, Parker Street Cluster Health Services will be presenting lunch time "mini" programs dealing with some of the various physical signs of stress. "Stress: The Body Connection," will include topics such as nutrition, exercise and sleep. Learn to recognize and manage your own unique physical response to stress. Our nurses are prepared to help you find your own "best self." They can work with you in finding the resources you need to deal with "Stress: The Body Connection." Come and bring your lunch ... a body connection you can't afford to miss.

All programs will be presented from 12-1pm during the week of November 1-5:

"Eating on the Run" - Film presentation & discussion 12-1pm.

- Nov 1 - PK Corporate Conference Room
- 2 - PMR Chicopee Conference Room
- 3 - CF 1 & 2, VR, HN, Time and room to be announced
- 4 - PK Corporate Conference Room
- 5 - PK Corporate Conference Room

"When Sleep Won't Come" presentation and discussion

- Nov 1 - PMR Chicopee Conference Room
- 3 - PK Health Services

"Relaxation/Responses" film presentation & discussion

- Nov 2 - PK Health Services
- 3 - PMR Chicopee Conference Room



## "Personal Management of Stress"

Some stress is positive and contributes to growth, creativity and success, while too much can be defeating. November's Lunchtime Seminar will examine some of the symptoms and consequences of stress. Simple stress reduction techniques will be presented as tools towards reducing stress.

Sponsored by Maynard Area Employee Assistance Program, the Seminar Series will be open to all employees. Just bring your lunch.

Marlboro	LM02	Nov 9	Cafeteria
Parker St	PK03	Nov 9	Corp. Aud.
Hudson	HLO	Nov 18	Mt. Wash. Rm
Action	ACO	Nov 17	Process Eng
Stow	OGO	Nov 10	Stow Conf Rn.
Time: 11:45 to 12:45			

Mill	MLO	Nov 3	Caft. Conf Rm
ML only: 11:30 to 12 and 12:15 to 12:45			

## New Product Planning Manual in print

The New Product Planning Manual, produced by Terminal Manufacturing, is now available from Northboro. The manual presents an overview of new product start-up at Digital including Phase, readiness and Status Reviews. In addition, there is information on manual planning tools (Gantt, WoPlan, Doneness Criteria, Pert, etc.); computerized tools such as PAC II, Pantt and Project 2 and the application and operation of PERTX.

The manual is an excellent reference guide for planners, schedulers and managers involved with new products.

To order your copy at \$45 each, send a TWX or memo to P&CS, NR03-1/W3, stating your name, location, badge number, cost center, quantity, title of publication and part number (EZZN040269).

Seats are still available in the New Product Planning Workshop to be held Dec. 6-10 in Bedford.

## A DIS manager wins award from Society for Management Information Systems

Bert B. Crawford, manager of Digital Information Systems, has won first place recognition in the Society for Management Information Systems (SMIS) papers competition.

His paper, "Corporate Electronic Mail: A Communications-Intensive Application of Information Technology," was cited for representing a significant advance for the use of electronic mail systems and for providing insights valuable to any organization implementing electronic mail. The paper has been published in the September issue of *MIS Quarterly*.

At Digital, AI is the corporate functional manager of all internal management information processing, telecommunications services and office systems in support of company operations, control and planning. His work has been instrumental in the genesis and success of Digital's electronic mail system, as well as many elements of office automation used and marketed by the company.

Before joining Digital, Crawford held positions with the U.S. Army in Communications, Research and Development, Automated Command and Control, and general electronics systems management. He holds a bachelor's degree in military science from the U.S. Military Academy at West Point and master's degrees in electrical and industrial engineering from Stanford University.

## Computerland show is a success



Digital's Personal Computers had a commanding presence at the Computerland Show held in Denver in the late summer. With more than 50 computer vendors displaying their products, Digital's booth was one of the most popular.

Most of Computerland's customers run small businesses and are first-time computer users. They are the target market for

the Rainbow 100 which fills the small business needs in price, ease of use and reliability. For more capabilities, the Professional 325 and 350 are the solutions.

The response to Digital's personal computers since the Computerland show came in substantial orders for Rainbow and the Professional.

## Add to your Skills

Registration is open for Office Education/Educational Services workshops for November. At the time of publication, there are openings for all of the classes listed.

- Basic DECword** Nov. 15-17 (PKO)
- DECword for WPS-8 Users** Nov. 3, 11 (PKO)
- Advanced DECword** Nov. 22-23 (PKO)
- Basic Word Processing** Nov. 8-10, 8-12, 15-17, 29-Dec. 1 (PKO)
- Basic WP for Managers/Supervisors** Nov. 3, 4 (PKO)
- Cost Center Expense Reports** Nov. 11 (BUO), 12 (PKO)
- Creating Effective Visuals** Nov. 23 (PKO)
- Delivering Effective Presentations** Nov. 1-2, 15-16, 30-Dec. 1 (PKO)
- EDT** Nov. 2, 12, 23 (PKO)
- EMS I** Nov. 29, 30 (PKO)
- EMS II** Nov. 4, 16 (PKO)
- Intermediate Word Processing** Nov. 5, 16, 23, 24 (PKO)
- Intro to Computer Concepts** Nov. 8 (PKO), 12 (BUO), 22 (PKO)
- Intro to Word Processing** Nov. 5 (PKO)
- Office Use of DECsystem-10** Nov. 8-10 (PKO)
- RCS** Nov. 5, 22 (PKO)
- RUNOFF** Nov. 11 (PKO)
- SOS/EDIT** Nov. 1, 24 (PKO)
- Telephonics** Nov. 23 (PKO)
- Time Management for Secretaries** Nov. 9 (PKO)
- Understanding Style** December 17 (PKO)
- WPS to EMS** Nov. 5, 12, 22 (PKO)
- Writing Effective Memos** Nov. 9 (PKO)
- WS200 System Manager** Nov. 4, 22 (PKO)

To register, send a memo with your name, badge number, cost center and cost center manager's signature to Registrar, PK03-1/B11 or contact the training coordinator at your facility. For additional information, call DTN 223-5820 for word processing/technical course or DTN 223-2872 for all others.

## Canobie was the icing on the cake



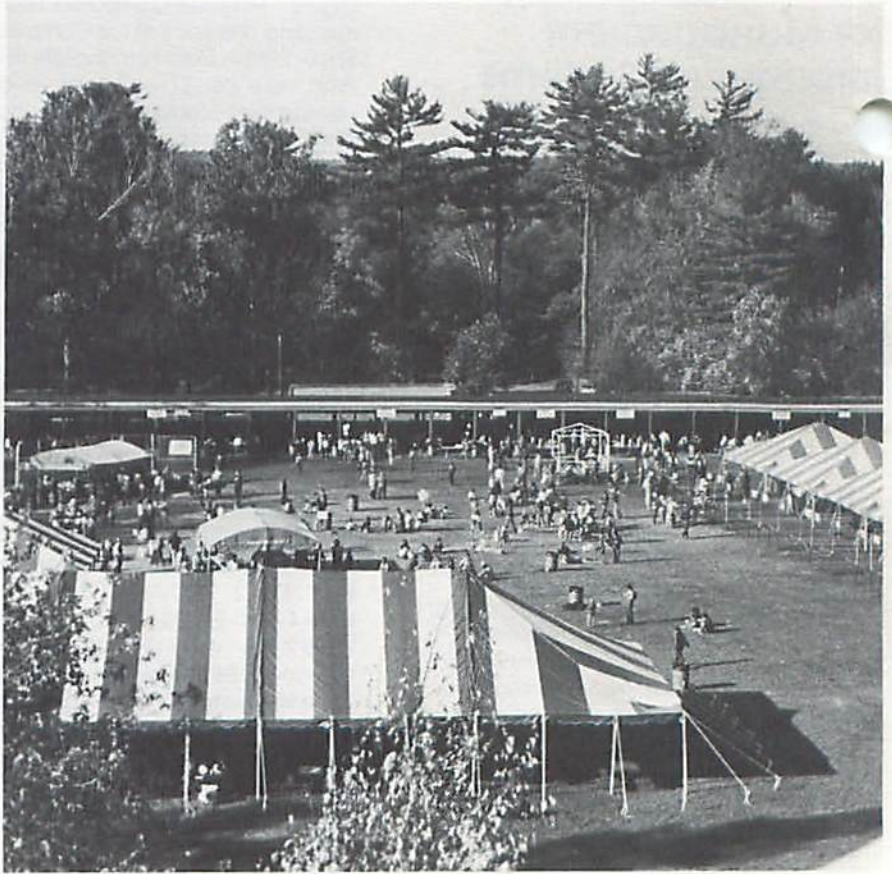
One hour later ...



Photos by K.



Ted Johnson, vice president, hosted 25th anniversary ceremonies at the Oct. 10 outing.



## Parker Street halfway to United Way goal

To date, 30 percent of Digital's Parker Street employees have donated \$27,000 toward their \$60,000 goal in the United Way campaign.

Employees who return their pledge cards by Oct. 29 will be eligible to participate in a raffle for a color TV, a 10-speed bicycle, a Walkman AM/FM cassette record-

er, a black and white TV or an AM/FM radio. The drawing will take place on Nov. 8 in the PK03 cafeteria at 12:15.

Henry Crouse, Key Executive for this year's campaign, will assist Bob Lux, site chairperson, in drawing the winning names. Come and see if you are one of the lucky ones.