

THE BOSTON STORE,

Foreign and Domestic Dry Goods,
Promoter of Low Prices.

CO-OPERATIVE BLOCK, MAYNARD, MASS.

ASAHEL H. HAYNES,

DEALER IN

MEN'S,
BOYS'

Ready Made Clothing

AND
YOUTH'S

GENTS' FURNISHING GOODS,

Hats, Caps, Gloves, Shawl Straps, Rubber Coats, Horse Blankets,

Hammocks, Trunks, Bags, and Umbrellas.

Co-operative Block,

- - Maynard, Mass.

Maynard and Stow Directory
1887-8.

RICH & VINECA

Dry Goods, Groceries,

Boots and Shoes, Furniture, Carpets and Hardware.

Choice Groceries a specialty.

Riverside Block,

- Maynard, Mass.

CHARLES H. PACKARD,
WATCHMAKER & JEWELER

Dealer in Watches, Clocks, Jewelry, Silverware, Spectacles and Fine Cutlery.

Maynard, - Mass.

C. H. PERSONS,

Pianos, Organs, Musical Mdse., Fancy Goods and Stationery

Riverside Block, Maynard, Mass.

ASSABET MANUFACTURING CO.

Manufacturers of Flannels.

Ladies' Dress Goods in great variety,

Indigo Blue Suitings for Men's Wear,
ALL WEIGHTS)

Indigo Blue Beavers,

Sacking Cloths,

Opera Flannels,

Tricot Suitings,

Rob Roy Checks, etc.

L. MAYNARD, Manufacturing Agent, Maynard, Mass.

T. QUINCY BROWNE, Treasurer, Boston, Mass.

Salesrooms—68 Worth Street, New York.

20 Bedford Street, Boston.

Maynard, - - - Mass.

HAYNES & TOURTELLOT, FLOUR, GRAIN, WOOD



Hen Food of all kinds, Scraps, Shells, Dessicated Fish, Poultry,
Horse and Cattle Invigorator.

Summer Street, Maynard.

GO TO THE
CO-OPERATIVE STORE,
FOR
FLOUR, GRAIN, GROCERIES,



Tinware, Hardware, Tobacco, Cigars, Confectionery, Boots, Shoes,
and Rubbers.

Corner of Nason and Summer Streets, Maynard, Mass.

SOMETHING NEW !

A New Flesh Brush, with a New Method of Use !

A Scientific, Physiological Appliance, Flexible, Reversible, and adapted to the electrical needs of the body. It produces better results in massage in five minutes than can be had by the hand alone in an hour: Softening and Cleansing the Skin more thoroughly than a Turkish bath; Freshening the Complexion, Equalizing the Circulation. Increasing Oxidation at the surface and the activity of the pores, thus relieving much of the sequelæ of skin inaction, such as Chills, Congestions, Consumption, Neuralgia, Paralysis, Rheumatism, Insomnia, Gout, and many fevers.

As a Conservator of Health, everybody needs one—a proper daily use helping all the organs of the body towards a healthy activity.

It will be sent, on the receipt of \$3.00, free by mail, with special directions for use, a guide to health, worth more to any one than the price of the Brush. For special terms, circular, or Brush, apply to

GEO. F. WATERS,

No. 8 Beacon Street, Boston, Mass.

MR. WM. H. BALDWIN, President of the Boston Young Men's Christian Union, uses and likes it, and says to his friends, "I would not take any money for it if I could not get another."

JAS. R. PITCHER, Sec'y U.S.M.A. Assn., of New York City, after having used a brush four months, writes: "Having used your Brush with excellent results for some months I desire to purchase three more of the same kind. Please forward at once."

MR. J. H. SIMONDS, Bradford, Pa., when buying a second Brush, wrote: "We like it very much; have shown it to our physician, and he highly approves of it, and will order it for his patients."

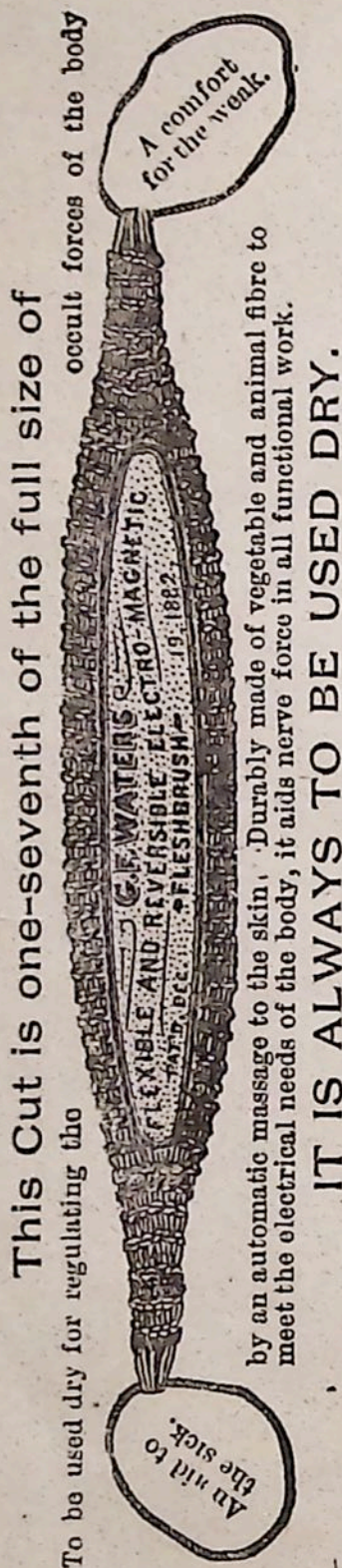
H. C. BARTLETT, M.D., Lyndon, Vt., when buying a second Brush, said: "It is a grand, good thing; the results obtained by it are altogether surprising. It produces an ideal condition of the skin, like that of an infant, soft as silk velvet, and cleaner than water could possibly make it."

A Boston M.D., after four months' use, said: "I have not been so free from Rheumatism for years as since I have been using it." He has now twenty-six in use by himself and patients.

MISS ELIZA JONES, Brighton Dist., a consumptive Boston school teacher, after six months' use said: "I like it very much indeed. I have not had a cough nor a cold since I began using it." She began to use it July 31, 1883, and has been practically well since.

JOHN T. SMITH, 3 Warren Place, Boston, and H. L. YERRINGTON, 27 Doane Street, Boston, each

testify to its great value in Rheumatism, having been relieved by it when all else failed to help.



RESIDENT ^{AND} BUSINESS

DIRECTORY

— OF —

MAYNARD ^{AND} STOW

MASS.

FOR 1887-8,

CONTAINING A COMPLETE RESIDENT, STREET AND
BUSINESS DIRECTORY, TOWN OFFICERS,
SCHOOLS, SOCIETIES, CHURCHES,
POST OFFICES, ETC.

A. E. FOSS & CO.

NEEDHAM:

CHRONICLE STEAM PRESS.

1887.

N. CURRIE & CO.,
C·L·O·T·H·I·N·G
GENTS' FURNISHINGS,



HATS AND CAPS
TRUNKS AND BAGS,

Maynard's Block, - - Maynard, Mass.

CONTENTS.

	Maynard.	Stow.
Abbreviations used - - - - -	29	69
Business Directory - - - - -	55	79
Census of Massachusetts - - - - -	25	
Churches - - - - -	16	65
Index to Advertisers - - - - -	82	
Library - - - - -	15	66
Post Offices - - - - -	15	64
Resident Directory - - - - -	29	69
Schools and Teachers - - - - -	15	64
Societies, Fraternal and Social - - - - -	19	67
Street Directory - - - - -	9	63
Town Officers - - - - -	11	78

Publishers' Card.

The Publishers desire to express their thanks to the people of the enterprising Towns of Maynard and Stow for the courtesy extended to them in their labor of canvassing, and for the patronage received for the work. No pains have been spared to make the Directory full and correct, but the public are requested to bear in mind the difficulty of compiling the first edition of so large a list of names without an occasional minor error, which can be better avoided in a second. It cannot fail to prove of value to all for frequent reference. The enterprising business houses of the vicinity offer favorable inducements, and we trust that they will receive a liberal patronage.

A. E. Foss & Co.

H. B. GOVE,

✧ B ✧ A ✧ K ✧ E ✧ R, ✧

Corner Nason and Summer Streets,
Maynard, Mass.

HEALTH FOOD CO.

Established
New York, 1874.

HEALTH FOODS.

Established
Boston 1878.

Simple Nutritious Foods for Sick and Well.

Use our Peeled Wheat Flour. It has no equal in bread making properties.

Use our Wheat Gluten. It is a valuable food and a sure remedy for Over-fatness, Diabetes and Dyspepsia.

The Student and the Brain Worker should use our **Brain Food**, (Wheat and Barley Germs). This is a delicious dish for breakfast, for dessert, or for the evening meal.

The Consumptive and the Nervously Enfeebled will find great strength and comfort from our **Universal Food and Extract of Gluten and Barley**. These are excellent Fat Formers. **Our Wheaten**, the popular breakfast or lunch food will sustain life unaided. Cooks in two minutes.

Our Peeled Wheat Crackers, Gluten Wafers, and Oat Wafers are scientifically perfect foods.

Our Cereal Coffee, (Barley and Wheat Gluten browned), nutritious and palatable, aids digestion, is without the stimulating narcotizing and clogging effects of tea, coffee and cocoa. An excellent beverage of which children may safely partake.

Our Gluten Suppositories cure Constipation and Piles.
Pamphlets and Price Lists freely mailed.

Beware of frauds and impostors using our name.

New England Agency, 199 Tremont Street, Boston.

HAIR STORE and HAIR DRESSING ROOMS.



Hair Goods at panic prices. Kid Gloves cleaned at short notice. Hair work of every description, including Hair Jewelry, in solid Gold Mounting, made to order. Combs of Hair carefully headed and made into hair work. Dominoes and hair work to let. Wig work one of our specialties. Hair work that has become faded, dyed. White hair that has changed color or faded to a yellow, restored to its original white shades. Preparations for changing hair to any of the shades worn, for sale.

154 Westminster St., Providence, R. I. 55 and 57 Arcade, upstairs.

MAYNARD STREETS, ETC.

Acton, from Summer to Acton line.
Beachmont ave., from Walnut to Thompson.
Boston Road, from Stow line to Sudbury line.
Brooks, from Summer to Concord.
Canal, from Boston Road to Summer Lane.
Concord, from Summer to Acton line.
Cross, from Acton to Pleasant.
East, from Parker to Elm.
Elm, off Summer.
Elm Court, off Acton, westerly.
Front, off Sudbury.
Glendale, from Summer, easterly.
Harriman Court, off Main, southerly.
High, off Sudbury, westerly.
Hillside, from Parker to Walnut.
Main, from Summer to Boston Road.
Maple, from Summer to Concord.
Maple Court, off Maple.
Nason, from Main to Acton.
Oak, from Hillside to Summit.
Parker, from Summer to Sudbury line.
Parmenter, from Parker to Boston Road.
Percival, from Sudbury to Boston Road.
Pine, from Canal at R. R. to Main.
Pleasant, from Acton to Warren.
Powder Mill, from Summer to Acton line.
Prospect Court, off Acton, head of Nason.
Puffer, from Parker to Sudbury line.
Railroad, off Main, easterly.
River, from Main to Walnut.
South, from Sudbury line, across Puffer, to Stow line.
Spring Lane, off Main, southerly.

Sudbury, from Main to Boston Road,
Summer, from Stow line to Sudbury line.
Summer Lane, from Summer to Boston Road.
Summit, from Oak to Walnut.
Thompson, from Walnut to Boston Road.
Thompson Court, from Thompson to Sudbury.
Walnut, from Main to Parker.
Warren, from Pleasant to Glendale.
West, from Parker to Elm.

THOMAS HILLIS,
COUNSELLOR AT LAW

Office, 28 School Street, and Central Block,
Maynard, Mass.

P. J. SULLIVAN,
MERCHANT TAILOR

Rooms 5 and 6 Maynard's Block, Boston, Main Street,
Maynard, Mass.

H. H. McGRAIL,
PROPRIETOR
Maynard House

ARTHUR HUGHES, CLERK.

Pool Room and Livery Connected with the House.

Summer St., Maynard, Mass.

TOWN OFFICERS.

School Committee—James F. Sweeney, M. H. Garfield, Orrin S. Fowler.

Selectmen and Board of Health—George Smethurst, Orrin S. Fowler, George Flood.

Assessors—Joel F. Parmenter, Michael Sweeney, Sydna B. Shattuck.

Town Clerk—W. B. Case.

Constables—Oscar B. Phelps, Edward Ferus, Samuel King.

Treasurer and Collector of Taxes—Lorenzo Maynard.

Surveyor of Highways—George A. Whitney.

Field Drivers—Eugene Coulbert, Asa S. Woodart.

Overseers of the Poor and Fence Viewers—George Smethurst, Orrin S. Fowler, George Flood.

Surveyors of Lumber—S. B. Shattuck, J. K. Harriman.

Measurers of Wood—W. H. Gutteridge, L. L. Pratt, W. A. Haynes.

Library Committee—A. Balcom, John W. Flood, Thomas Dean.

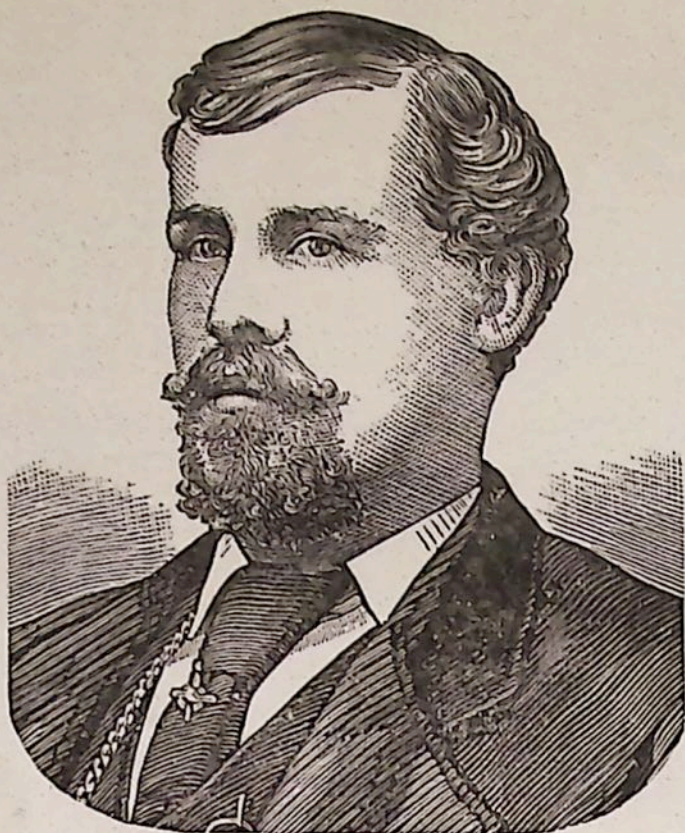
Sealer of Weights and Measures—George F. Cutting.

Public Weighers—Michael Sweeney, Michael Twomey.

Firewards, General—J. K. Harriman, W. H. Gutteridge, Lorenzo Maynard, Michael Sweeney.

Firewards, Forest—Charles Randall, Augustus Newton.

Special Police—Lucius D. Wilson, Charles F. Cahill, John Carpenter, Henry Ledgard, John White, James Haire, F. F. Robertson.



TRADE MARK.

PURITENE

IS SOAP IN A CONCENTRATED STATE.

A tea cup full of Puritene will do more work and be more lasting, if used according to directions, than any 25 cents' worth of soap. It contains no adulterations. It is made from pure and clean materials, and is perfectly harmless to the clothes. It will not injure the skin, but improve it. Remember Puritene will not injure the finest fabric. Never makes the hands sore.

DON'T BE A DOUNDERFUNK.

WE LIVE IN AN AGE OF PROGRESSION.

Puritene is not "about the same as other washing powders," as perhaps you have been told by some unscrupulous parties, but Puritene is the greatest invention of the 19th century. Imitated by many, equalled by none. Insist on having Puritene. And be sure that you get what you seek. See that it is Manufactured by the

Jinks' Soap Manufacturing Co.

TO THE TRADE—Don't fail to send for sample and Price. It will please you. Correspondence and trial order solicited from the trade.

Mansfield, Mass.

O. S. FOWLER,
UNDERTAKER

AND DEALER IN

Coffins, Caskets, Robes, and every requisite for the proper burial
of the dead.

Monumental Work in Granite and Marble constantly on hand.

Nason Street, near Acton, Maynard.

SAMUEL KING 2ND,
LIVERY AND BOARDING STABLE



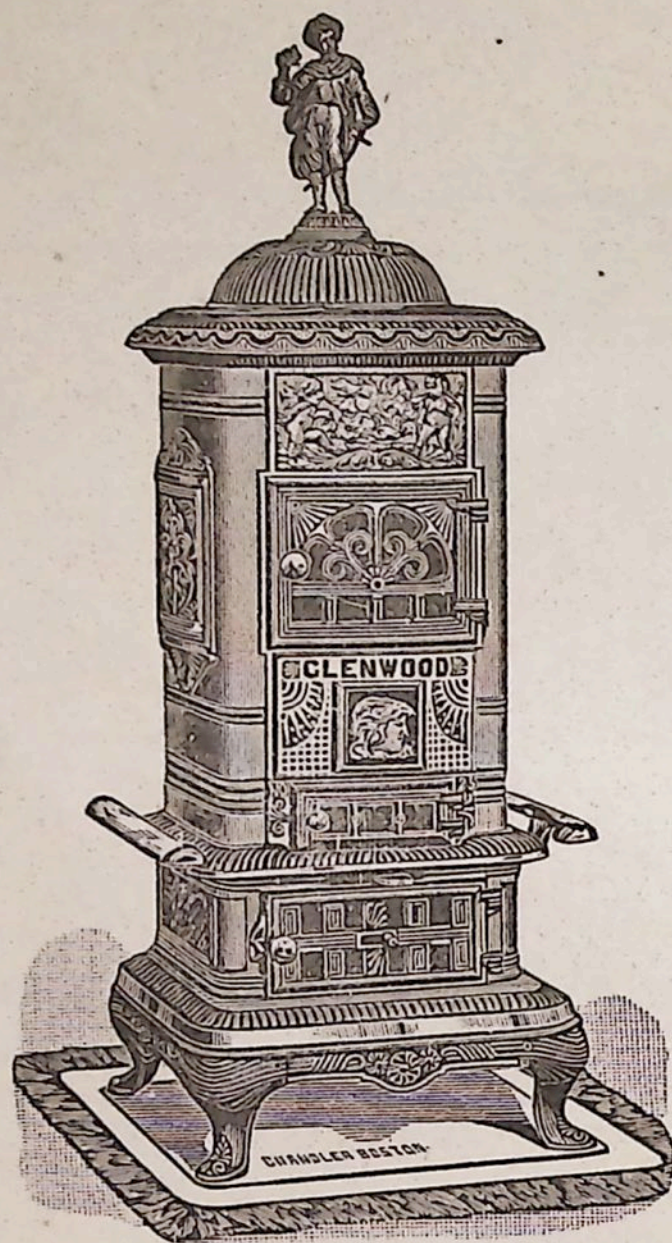
First-class Teams furnished for all occasions at reasonable
prices.

Stable, Glendale Street, near Summer, Maynard.

OLIVER TAYLOR & SON,
DEALERS IN
PURE ❖ MILK

Taylor Street, Stow, Mass.

A. D. HOLT,
 Manufacturer and Dealer in
STOVES AND TIN WARE.



ALSO
 FURNACES,
 RANGES,
 CUTLERY,
 COPPER,
 PLATED,

Britannia, Glass,
 Wooden and Hollow Ware,
 Sheet Lead, Lead Pipe, Pumps,
 of all kinds,
 Iron Sinks, etc., etc.

Jobbing of all kinds in my line
 promptly performed.

Summer St., near Main,
 Maynard, Mass.

J. O. MOORE,
 ✧ B ♦ A ♦ K ♦ E ♦ R ✧

Home made Cake and Pies of every description.

Wedding Cake a specialty.

All orders promptly attended to.

Summer Street, - - Maynard, Mass.

MAYNARD POST OFFICE.

Mails arrive 8.59 a. m., 4.04 and 6.31 p. m.

Mails close 7.10 and 7.40 a. m., 12.45 and 5.10 p. m.

Open from 5.45 a. m. to 8.30 p. m.

E. M. Johnson, P. M.

J. W. Sunderland, Asst. P. M.

MAYNARD PUBLIC LIBRARY.

Cooperative Block, Summer street, corner Nason.

Contains 3000 volumes.

Open to the public Wednesday evening from 6.30 to 8.30, and Saturday from 1.00 to 9.00 p. m.

Librarian, Mrs. F. W. Nyman.

Trustees, John W. Flood, Thomas Dean, Asahel Balcom.

MAYNARD SCHOOLS AND TEACHERS.

High—Wm. B. Allen, Prin., Lizzie E. Moody, Asst.
Grammar, Emily A. Gordon, Prin., Lillian B. Conant,
Assistant.

Nason St. Intermediate, Mary E. Jenkins.

Main St. Intermediate, Mary E. Felton.

Garfield Intermediate, Anabel Durgin.

Main St. Primary, Rose Winkley.

Nason St. Primary, Edith Garfield.

Acton St. Primary, Gertrude Thompson.

Garfield St. Primary, Alice Nagle.

MAYNARD CHURCHES.

Evangelical Union Church.

Main street.

Pastor, Rev. David H. Brewer.

Deacons, Lorenzo Maynard, Wm. H. Gutteridge.

Clerk, John W. Flood.

Treas., Wm. H. Gutteridge.

Chorister, Amory Maynard 2d.

Organist, H. E. French.

Sunday Services—10.30 a. m., and 7 p. m.

Sunday School—12 m.

S. S. Supt., Lorenzo Maynard.

Secretary, John W. Flood.

Treas., John H. Fix.

Librarian, Alfred Haire.

Prayer meeting Wednesday evening 7.30.

Young People's meeting Sunday evening 6.15.

Ladies' Society meets 1st Thursday in each month.

Methodist Episcopal.

Corner Main and Summer streets.

Pastor, Rev. Wm. Wignall.

Trustees, A. D. Holt, Joel Abbot, Edward Henderson,
Chas. Watson, S. G. Brown, W. Parmenter, Emory Doyle,
L. R. Cheney.

Chorister, Mrs. L. R. Cheney.

Organist, Martha Henderson.

Stewards, L. D. Wilson, Albert Batley, L. R. Cheney,
Washington Parmenter, A. F. Holt, A. D. Holt, Edward
F. Tilton.

Sunday Services, 10.30 a. m., 7 p. m.
Sunday School, 12 m.
S. S. Supt., L. R. Cheney.
Treasurer, Ada Naylor.
Sec., Jennie Lawton.
Librarians, Albert Brinks, Albert Randall.
Class meeting Sunday, 3 p. m., Friday evening 7.30.
Class Leader, L. D. Wilson.
Prayer meeting Wednesday evening 7.30.

St. Bridget's Catholic.

Corner Sudbury and Percival streets.
Rector, Rev. M. J. McCall.
Asst. Rector, Rev. John A. Croe.
Sexton, John O. Moore.
Sunday Services, 9 and 11 a. m every alternate Sunday.

GEO. FLOOD,
HACK, FEED
AND LIVERY STABLE,

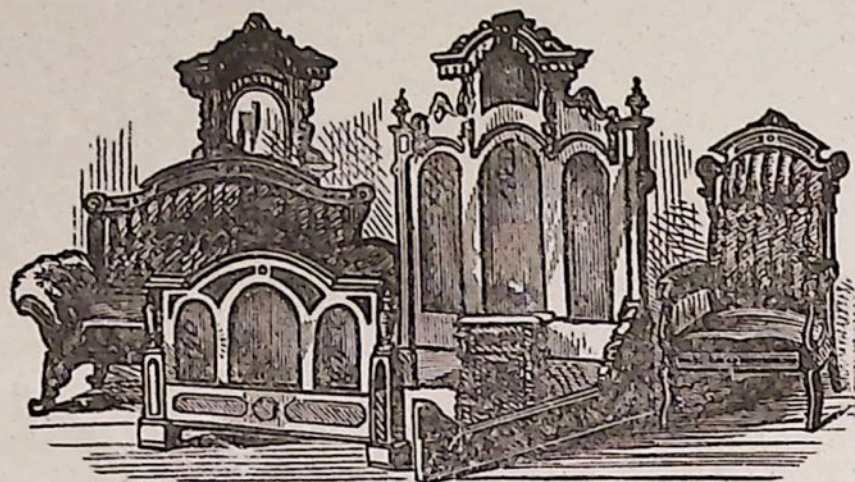


Particular Attention given to Weddings, Parties, Funerals, etc.

Harriman's Court, Maynard,

J. W. JUBB,
Manufacturer and Dealer in
FURNITURE

Carpets, Refrigerators, Baby Carriages, Window Shades,
Paper Hangings, etc.



Furniture Repaired. Mattresses Made Over. Pictures Framed to Order.
Feather Beds Renovated by Steam. Agent for the Crosby Invalid Bed.

3 and 4 Darling's Block, Summer St., Maynard.

JOHN Y. TUCKER,
HORSE SHOER
AND GENERAL BLACKSMITH.



Care taken in Shoeing Interfering, Over-reaching and Tender-footed
Horses. All work warranted. and at "live and let live" prices.

Opposite Assabet Manufacturing Co's Mills,

Maynard, Mass.

MAYNARD SOCIETIES.

A. F. A. M.

CHAS. A. WELCH LODGE.

Meets 2nd Thursday evening of each month in Masonic Hall, Main St.

W. M., Thos. Lees.
S. W., Thos. Dean.
J. W., F. H. Salisbury.
Treas., Jas. H. Higgins.
Sec., Lucius H. Maynard.
S. D., Wm. H. Little.
J. D., Henry Newcomb.
S. S., John S. Eiche.
J. S., Douglas H. Livingstone.
I. S., Chas. P. Coster.
Tyler, James Nelson.

D. of R.

MIZPAH LODGE, No. 54.

Meets at Odd Fellows Hall, cor. Nason and Summer streets, 1st and 3rd Thursday evenings each month.

N. G., Mary Flood.
V. G., Lizzie Jordan.
R. S., Lucy J. Case.
Treas., Alice M. Henderson.
F. S., Emma L. Stuart.
Warden, Lizzie M. Lovell.

Con., Lillian M. Clark.
I. G., Annie M. Morris.
O. G., James H. Little.
Chap., Agnes Smith.
R. S. N. G., Abbie J. Parmenter.
L. S. N. G., Ora A. Willis.
R. S. V. G., Emily Randall.
L. S. V. G., Jennie Adams.

I. O. G. T.

IOLA LODGE, No. 91.

Meets at Riverside Hall every Tuesday evening.

W. C. T., Elmore Parker.
W. V. T., Florence Kennison.
Sec., George Carmichael.
Fin. Sec., Millie Rogers.
Treas., Isaac Binks.
Mar., Rachel Carter.
Chap., Mrs. A. Clements.
D. M., Fred Charlow.
Asst. Sec., Garvey Taylor.
I. G., Eliza Caswell.
O. G., Henry Kimball.
R. H. S., Sarah Price.
L. H. S., Lizzie Hunt.

I. O. O. F.

MAYNARD LODGE, No. 121.

Meets in Odd Fellows Hall, corner Summer and Nason streets, every Wednesday evening.

N. G., Geo. F. Davis.
V. G., Levi R. Cheney.
R. S., O. J. Howard.
Treas., Wm. B. Case.

P. S., T. H. Hillis.
Warden, Wm. Smith.
Con., J. H. Little.
Chap., A. D. Holt.
P. G., George V. Ball.
I. G., Elmore Parker.
O. G., Fred W. Gray.

I. O. O. F., Manchester Unity.

LOYAL ASSABET LODGE, No. 6595.

Meets at Masonic Hall, Main street, 1st and 3rd Wednesday evenings each month.

G. M., Solomon Ledger.
N. G., James Bramley.
V. G., Joseph Rollinson.
P. S., George Parkin.
E. S., David Miller.
Treas., Henry Axford.
Con., Samuel Lawton.
Chap., James E. Singer.
L. M., Arthur Dimory.
Warden, Hiram Parkin.
Guardian, Charles C. Wellington.
R. S., Wm. Worship.
L. S., Isaac Binks.

Royal Arcanum.

ASSABET COUNCIL, No. 740.

Meets 1st and 3rd Monday evenings each month, in Masonic Hall, Main street.

R., Thomas Deane.

V. R., George L. Smethurst.
Sec., George Jones.
Treas., M. Howell Garfield.
Chap., Edward Anderson.
Orator, Benjamin Carter.
Col., Michael Sweeney.
Guard, Thomas Sexton.
Guide, James Bent.
P. R., John S. Vose.

J. BURKILL,
MERCHANT TAILOR

Ladies' Sacks and Gents' Shirts a Specialty.

3 Pope Street, - - Hudson, Mass.

A. E. FOSS & CO.

PUBLISHERS OF

RESIDENT AND BUSINESS

❖ DIRECTORIES ❖

HOME OFFICE,

Needham, - - - Mass.

CENSUS OF MASSACHUSETTS.

BARNSTABLE Co.

	1880.	1885.
Barnstable	4,242	4,050
Bourne		1,363
Brewster	1,144	934
Chatham	2,252	2,028
Dennis	3,288	2,923
Eastham	692	638
Falmouth	2,422	2,520
Harwich	3,265	2,783
Mashpee	346	311
Orleans	1,294	1,176
Provincetown	4,341	4,480
Sandwich	3,543	2,124
Truro	1,017	972
Wellfleet	1,875	1,687
Yarmouth	2,173	1,856

BERKSHIRE Co.

Adams	5,591	8,283
Alford	348	341
Becket	1,123	938
Cheshire	1,537	1,448
Clarksburg	724	708
Dalton	2,052	2,113
Egremont	875	826
Florida	459	487
Great Barrington	4,653	4,471
Hancock	642	613
Hinsdale	1,595	1,656
Lanesborough	1,286	1,212
Lee	3,939	4,274
Lenox	2,043	2,154
Monterey	635	571
Mount Washington	205	160
New Ashford	203	163
New Marlborough	1,876	1,661
North Adams	10,191	12,540
Otis	785	703
Peru	403	368
Pittsfield	13,364	14,466

1880. 1885.

Richmond	1,124	854
Sandisfield	1,107	1,019
Savoy	715	691
Sheffield	2,204	2,033
Stockbridge	2,357	2,114
Tyringham	542	457
Washington	493	470
West Stockbridge	1,923	1,648
Williamstown	3,394	3,729
Windsor	644	657

BRISTOL Co.

Acushnet	1,105	1,071
Attleborough	11,111	13,175
Berkley	927	941
Dartmouth	3,430	3,448
Dighton	1,791	1,782
Easton	3,902	3,948
Fairhaven	2,875	2,880
Fall River	48,961	56,870
Freetown	1,329	1,457
Mansfield	2,765	2,939
New Bedford	26,845	33,393
Norton	1,732	1,718
Raynham	1,681	1,535
Rehoboth	1,891	1,788
Seekonk	1,227	1,295
Somerset	2,006	2,475
Swansea	1,355	1,403
Taunton	21,213	23,674
Westport	2,894	2,706

DUKES Co.

Chilmark	494	412
Cottage City	672	709
Edgartown	1,303	1,165
Gay Head	161	186
Gosnold	152	122
Tisbury	1,518	1,541

ESSEX CO.			1880.	1885.	
	1880.	1885.			
Amesbury	3,355	4,403	Leverett	742	779
Andover	5,169	5,711	Leyden	507	441
Beverly	8,456	9,186	Monroe	166	176
Boxford	824	840	Montague	4,875	5,629
Bradford	2,643	3,106	New Salem	869	832
Danvers	6,598	7,051	Northfield	1,603	1,705
Essex	1,670	1,722	Orange	3,169	3,650
Georgetown	2,231	2,299	Rowe	502	582
Gloucester	19,329	21,703	Shelburne	1,621	1,614
Groveland	2,227	2,272	Shutesbury	529	485
Hamilton	935	851	Sunderland	755	700
Haverhill	18,472	21,795	Warwick	713	662
Ipswich	3,099	4,207	Wendell	465	509
Lawrence	39,151	38,862	Whately	1,074	999
Lynn	38,274	45,867	HAMPDEN Co.		
Lynnfield	686	766	Agawam	2,216	2,357
Manchester	1,640	1,639	Blandford	979	954
Marblehead	7,467	7,517	Brimfield	1,203	1,137
Merrimac	2,237	2,378	Chester	1,473	1,318
Methuen	4,392	4,507	Chicopee	11,286	11,516
Middleton	1,000	899	Granville	1,205	1,193
Nahant	808	637	Hampden	958	868
Newbury	1,566	1,590	Holland	302	229
Newburyport	13,538	13,716	Holyoke	21,915	27,895
North Andover	3,217	3,425	Longmeadow	1,401	1,677
Peabody	9,028	9,530	Ludlow	1,526	1,649
Rockport	3,912	3,888	Monson	3,758	3,958
Rowley	1,201	1,183	Montgomery	303	278
Salem	27,563	28,090	Palmer	5,504	5,923
Salisbury	4,079	4,840	Russell	813	847
Saugus	2,625	2,855	Southwick	1,104	982
Swampscott	2,500	2,471	Springfield	33,340	37,575
Topsfield	1,165	1,141	Tolland	452	422
Wenham	839	871	Wales	1,030	853
West Newbury	1,989	1,899	Westfield	7,587	8,961
			West Springfield	4,145	4,448
			Wilbraham	1,628	1,724
FRANKLIN Co.			HAMPSHIRE Co.		
Ashfield	1,056	1,097	Amherst	4,298	4,199
Bernardston	934	930	Belchertown	2,346	2,307
Buckland	1,739	1,760	Chesterfield	769	698
Charlemont	932	958	Cummington	881	805
Colerain	1,777	1,605	Easthampton	4,205	4,291
Conway	1,760	1,573	Enfield	1,043	1,010
Deerfield	3,543	3,042	Goshen	327	336
Erving	872	873	Granby	753	729
Gill	733	860	Greenwich	633	532
Greenfield	3,903	4,869	Hadley	1,938	1,747
Hawley	592	545	Hatfield	1,495	1,367
Heath	560	568	Huntington	1,236	1,267

	1880.	1885.		1880.	1885.
Middlefield	648	513	Stow	1,045	976
Northampton	12,172	12,896	Sudbury	1,178	1,165
Pelham	614	549	Tewksbury	2,179	2,333
Plainfield	457	453	Townsend	1,967	1,846
Prescott	460	448	Tyngsborough	631	604
South Hadley	3,538	3,949	Wakefield	5,547	6,060
Southampton	1,046	1,025	Waltham	11,712	14,609
Ware	4,817	6,003	Watertown	5,426	6,238
Westhampton	563	541	Wayland	1,962	1,946
Williamsburg	2,234	2,044	Westford	2,147	2,193
Worthington	758	763	Weston	1,448	1,427
MIDDLESEX Co.			Wilmington	933	991
Acton	1,797	1,785	Winchester	3,802	4,390
Arlington	4,100	4,673	Woburn	10,931	11,750
Ashby	914	871	NANTUCKET Co.		
Ashland	2,394	2,633	Nantucket	3,727	3,143
Ayer	1,881	2,190	NORFOLK Co.		
Bedford	931	930	Bellingham	1,223	1,198
Belmont	1,615	1,639	Braintree	3,855	4,040
Billerica	2,000	2,161	Brookline	8,057	9,196
Boxborough	319	348	Canton	4,516	4,380
Burlington	711	604	Cohasset	2,182	2,216
Cambridge	52,699	59,658	Dedham	6,233	6,641
Carlisle	478	526	Dover	653	664
Chelmsford	2,553	2,304	Foxborough	2,950	2,814
Concord	3,922	3,727	Franklin	4,051	3,983
Dracut	1,595	1,927	Holbrook	2,130	2,334
Dunstable	453	431	Hyde Park	7,088	8,376
Everett	4,159	5,825	Medfield	1,371	1,594
Framingham	6,235	8,275	Medway	3,956	2,777
Groton	1,862	1,987	Millis		683
Holliston	3,098	2,926	Milton	3,206	3,555
Hopkinton	4,601	3,922	Needham	5,252	2,586
Hudson	3,739	3,968	Norfolk	930	825
Lexington	2,460	2,718	Norwood	2,345	2,921
Lincoln	907	901	Quincy	10,570	12,145
Littleton	994	1,067	Randolph	4,027	3,807
Lowell	59,475	64,107	Sharon	1,492	1,328
Malden	12,017	16,407	Stoughton	4,875	5,173
Marlborough	10,127	10,941	Walpole	2,494	2,443
Maynard	2,291	2,703	Wellesley		3,013
Medford	7,573	9,042	Weymouth	10,570	10,740
Melrose	4,560	6,101	Wrentham	2,482	2,710
Natick	8,479	8,460	PLYMOUTH Co.		
Newton	16,995	19,759	Abington	3,697	3,699
North Reading	900	878	Bridgewater	3,620	3,827
Pepperell	2,348	2,587	Brockton	13,608	20,783
Reading	3,181	3,539	Carver	1,039	1,091
Sherborn	1,401	1,391	Duxbury	2,196	1,924
Shirley	1,365	1,242	East Bridgewater	2,710	2,812
Somerville	24,933	29,971	Halifax	542	530
Stoneham	4,890	5,652			

	1880.	1885.		1880.	1885.
Hanover	1,897	1,966	Leominster	5,772	5,297
Hanson	1,309	1,227	Lunenburg	1,101	1,071
Hingham	4,485	4,375	Mendon	1,094	945
Hull	383	451	Milbury	4,741	4,555
Kingston	1,524	1,570	Milford	9,310	9,343
Lakeville	1,008	980	New Braintree	610	558
Marion	958	965	Northborough	1,676	1,853
Marshfield	1,781	1,649	Northbridge	4,053	3,786
Mattapoisett	1,365	1,215	North Brookfield	4,459	4,201
Middleborough	5,237	5,163	Oakham	869	749
Pembroke	1,405	1,313	Oxford	2,604	2,355
Plymouth	7,093	7,239	Paxton	592	561
Plympton	694	600	Petersham	1,109	1,032
Rochester	1,043	1,021	Phillipston	621	530
Rockland	4,553	4,785	Princeton	1,100	1,038
Scituate	2,466	2,350	Royalston	1,192	1,153
South Abington	3,024	3,595	Rutland	1,059	963
South Scituate	1,820	1,589	Shrewsbury	1,500	1,450
Wareham	2,896	3,254	Southborough	2,142	2,100
West Bridgewater	1,665	1,707	Southbridge	6,404	6,501
SUFFOLK Co.			Spencer	7,466	8,247
Boston	362,839	390,393	Sterling	1,414	1,331
Chelsea	21,782	25,709	Sturbridge	2,062	1,980
Revere	2,263	3,637	Sutton	3,105	3,101
Winthrop	1,043	1,370	Templeton	2,789	2,027
WORCESTER Co.			Upton	2,023	2,265
Ashburnham	1,666	2,058	Uxbridge	3,111	2,948
Athol	4,307	4,758	Warren	3,889	4,031
Auburn	1,317	1,268	Webster	5,696	6,220
Barre	2,419	2,093	Westborough	5,214	4,880
Berlin	977	899	West Boylston	2,994	2,927
Blackstone	4,907	5,436	West Brookfield	1,917	1,747
Bolton	903	876	Westminster	1,652	1,556
Boylston	854	834	Winchendon	3,722	3,872
Brookfield	2,820	3,013	Worcester	58,291	68,389
Charlton	1,900	1,823	BY COUNTIES.		
Clinton	8,029	8,945	Barnstable	31,897	29,845
Dana	736	695	Berkshire	69,032	73,828
Douglas	2,241	2,205	Bristol	139,040	158,498
Dudley	2,803	2,742	Dukes	4,300	4,135
Fitchburg	12,429	15,375	Essex	244,535	263,727
Gardner	4,988	7,283	Franklin	36,001	37,449
Grafton	4,030	4,498	Hampden	104,104	116,764
Hardwick	2,233	3,145	Hampshire	47,232	48,472
Harvard	1,253	1,184	Middlesex	317,830	357,311
Holden	2,499	2,470	Nantucket	3,727	3,142
Hubbardston	1,386	1,303	Norfolk	96,507	102,142
Lancaster	2,008	2,050	Plymouth	74,018	81,680
Leicester	2,779	2,923	Suffolk	387,927	421,109
			Worcester	226,897	244,039
Totals—			1880, 1,783,085; 1885, 1,942,141.		

MAYNARD RESIDENT DIRECTORY

Abbreviations Used.

Ag., agricultural; agt., agent; asst., assistant; av, or ave. avenue; b, boards; bldg., building; blk., block; com., commission; c. or cor., corner; clk., clerk; com. trav., commercial traveller; emp., employee; h., house; ins., insurance; J. P., Justice of the Peace; lab., laborer; p., place; P. O. Post Office; prof., professor; prop., proprietor; rd., road; mfy., manufactory. After the name of a street the word "street" is omitted.

Abbott Joel, farmer, h Maple
Adams Mrs Joseph, h Main
Akroyd Mrs Hannah, b Robert Starling's
Alexander James, weaver, b R H Casey's
Allen Abraham, spinner, h 20 Railroad
 Mrs Louise, h Main near Canal
 Wm A, High school teacher, b Mrs H A Fowler's
Anderson Chas, emp Assabet mills, b Mrs Wm Lee's
 John, attendant Abijah Brigham's, b N D Wilcomb's
 John, wool sorter, b Joseph Hind's
 John, mill operative, h River
 Robert, night watchman, b Mrs James Layden's
Auslane Wm J, mill operative, h Summer
Axford Henry, wet finisher Assabet mills, h 4 Summit
Bailey John P, emp American Powder Co, h Main
Balcam Asahel, farmer, justice of peace and surveyor, h
 Parker
Bancroft John, dresser tender, h Pleasant
Banks Wm O, emp Assabet mills, h Parker
Banning Mrs Mary, h Main
Barnes James, finisher, b J T Wentworth's
 Lorenzo, emp Haynes & Tourtellot, h Walnut
 Ward, farmer, h Walnut

- Barnett J H James, dresser, b Frank Hibbard's
 Batley Albert, overseer Assabet mills, h Parker
 Belcher Chas Jr, emp Assabet mills, h Canal
 Benleso Alphonso, farm hand, b N D Wilcomb's
 Bennell Fred, emp Assabet mills, h Pine
 Bent James R, farmer, h Summer
 Jonathan P, farmer, h Summer
 Bergstram Augustus, emp Assabet mills, h Maple Court
 Billington John, dresser, h Nason
 Binks Joseph, file cutter, h Elm
 Binns Thomas B, wool sorter, h Walnut
 Bishop Wm, mill operative, h River
 Blood Mrs Mary S, h Elm Court
 Blye George W, emp Assabet mills, h Nason
 Brackett Jackson, lab, h Summer cor Acton
 Bracts Thomas, spinner, b R H Casey's
 Bradford Albert A, wool sorter, h Pleasant
 Bramley James, spinner, h River
 Brayden John, yard hand Assabet mills, h Main
 Brennan Peter, wool sorter, h 15 Sudbury
 Brewer Rev David H, pastor Congregational church, h
 Main
 Briendley Mrs Christena, h River
 Briggs Mrs Lucy P, h Canal
 Brigham Abijah, b N D Wilcomb's
 Brimstin Johnston, boarding house, h Main
 Brodeur Chas E, wool sorter, h 2 East
 Brooks Charles, clerk Webster's store, b Mrs Margaret
 Damson's
 Chas G, milk man and farmer, h Summer Lane
 Luke S, b Joel Abbott's
 Lydia, h Summer
 Silas P, farmer, h Summer cor Summer Lane
 William H, house painter, h Summer cor Summer
 Lane
 Brotherston Andrew K, tailor, h Acton near Pleasant
 Thomas, emp Assabet mills, h 17 Elm
 Brown Mrs Georgie, h Boston Road
 Geo F, teaming and jobbing, h Acton
 Mrs Mary J, h Main
 Samuel G, farmer, h Summer
 Samuel T, farmer, h Boston Road

- Buckley Arthur W, wool sorter, b William S Henderson's
 Dennis E, coachman, h 2 Thompson
 John W, spinner, h Walnut
 Timothy, farm hand, h Walnut
 Burke Michael, mill operative, h River
 Wm F, emp market, h Glendale
 Burnham Edward, mason, rooms Mrs Jane King's
 Burns John, weaver, b Richard H Casey's
 Butcher Fred N, weaver, b Wm Bishop's
 Butters Burton H, overseer finishing room Assabet mills, h
 Maple
 Butterworth Joel, wool sorter, h Summer
 Byrne Owen, emp Assabet mills, h Parker
 Cahill Chas F, lamp lighter, h off Main
 Callahan Dennis, emp American powder mills, h Prospect
 Court
 John, h Prospect Court
 Timothy, h 11 Sudbury
 Campbell Mrs Catherine, h Main
 John, spinner, b Jeremiah Mahoney's
 John, spinner, b Mrs Sarah Kennedy's
 Carey Thomas F, emp American powder mills, h Powder
 Mill
 Carmichael Geo, emp Assabet mills, h 13 Elm
 Carney James H, wool sorter, h Summer
 John A, wool sorter, h Summer
 Peter, emp Assabet mills, b Mrs J Hall's
 Carpenter Chas, weaver, b R H Casey's
 John, spinner, h Main
 Carr Mrs Mary, h Nason
 Carter Benjamin, spinner, h 1 Oak
 Frederick, clerk Higgins' store, h Nason
 Jonathan, spinner, h River
 Carver John, mill operative, h High
 Wm, shoe maker, h High
 Carvey Edward, emp Assabet mills, b Thos H Farrell's
 Case Wm B, dry goods, furnishings etc, h Main
 Casey James, spinner, h Maple Court
 Jeremiah, h Maple Court
 Patrick F, mill operative, h High
 Richard H, boarding house, h Main
 Wm, spinner, h Maple Court

- Cash Thos, weaver, b J Brimstin's
 Cashan Peter, emp Assabet mills, h Nason
 Caswell Robert, janitor Maynard block, h Nason
 Champagne Geo, farmer, h South
 Geo Jr, wool sorter, h 3 Front
 Josep, emp Assabet mills, h South
 Champion Simon, loom fixer, h 8 Thompson
 Chapin John W, wool sorter, h Maple
 Cheney Chas H, carpenter, h Thompson Court
 Henry H, carpenter, h 4 High
 James H, carpenter, h Concord
 Levi R, carpenter and builder, h Brooks
 Maria E, dressmaker, h Thompson Court
 Mrs Sophia R, dressmaker, h Thompson Court
 Church John W, house painter, h 11 Railroad
 Claflin James H, wool sorter, h 16 Sudbury
 Clark Henry W, wool sorter, h 3 Elm
 Lillian M, dressmaker, h 3 Elm
 Lorenzo W, loom fixer, h 8 East cor Elm
 Martin E, spinner, h 3 Elm
 Martin L, mill operative, h 3 Elm
 Clayton Chas R, spinner, h River
 Chas W, mill employee, h River
 Cleary Mrs Ann, h 5 Percival
 Bartholemew, mill operative, h 14 Sudbury
 Daniel, yard hand Assabet mills, h High
 Mrs Ellen, h Main
 John W, spinner, h Main
 Wm G, house painter, h High
 Clegg Wm, hostler, b Geo Flood's
 Clemant Harris A, powder maker, h Powder Mill
 Mrs Laura M, h 19 Sudbury
 Coffin Charles K, house painter, h Main cor Spring Lane
 Colbarth Eugene, lab, h off Glendale
 Collins Daniel C, spinner, h 7 Thompson
 Mrs Mary, h High
 Comeau Frank, emp Assabet mills, b David P Lemoines'
 John B, carpenter, b Joseph Reynold's
 Conant Mrs Charlotte G, h Pleasant
 Conley Patrick, weaver, b Richard H Casey's
 Connolly James, h Maple
 James H, dresser tender, h Maple

- Connolly Jeremiah, mill operative, b P F Casey's
 T William, mill operative, h Maple
- Connor Frank R, overseer card room Assabet mills, h 4
 Hillside
 John, emp Assabet mills, b Mrs I Hall's
 Thomas, emp Assabet mills, b Mrs I Hall's
- Cook Frederick, farm hand, emp and b James Haynes'
 Lewis, wool sorter, h River
 Lewis Jr, spinner, h Glendale
 Silas, spinner, h River
- Cooper John, wool sorter, b Mrs Sarah Kennedy's
- Corcaran Thomas, h 6 Front
- Costelo John, mill operative, b Mrs Sarah Hillis'
- Coster Chas P, carpenter, h Powder Mill
- Coughlin Daniel, lab, h Acton
 Daniel, mill operative, h Boston Road
 Dennis F, emp Assabet mills, h Main
 Timothy, emp Assabet mills, h Warren
- Coulter James H, lab, h 7 Percival
 John 2nd, hand weave room Assabet mills, h Hill-
 side
- Counihan Patrick, shoe maker, b Morris O'Connor's
 Michael, mill operative, h Main over Hill's store
- Croft Arthur, carpenter, b Richard H Casey's
 Wm, carpenter, b John F Wentworth's
- Creighton Geo, spinner, h Spring Lane
 Geo H, 2nd hand card room Assabet mills, h Spring
 Lane
- Cronan Daniel, mill operative, h 17 Sudbury
 Wm, mill operative, h 17 Sudbury
- Crosby Frank L, provisions, h
- Crossley Frank, emp Assabet mills, b Mrs Margaret Daw-
 son's
 Robert, dyer, h Maple
 Wilkinson, dyer, h Maple
- Crowley Connelius, emp Assabet mills, h Glendale
 M Frank, emp Assabet mills, h Railroad
 John, h 2 Railroad
 Michael, mill operative, h 2 Railroad
 Michael J, hairdresser, h Nelson
 Wm, h Glendale
- Cullen John, emp Assabet mills, b Mrs I Hall's

- Cullen Wm, spinner, h Glendale
 Cunningham John, wool sorter, b Mrs Wm Lee's
 CURRIE NEIL, clothing and gents' furnishing goods, N
 Currie & Co, h Acton
 Curtis Herman, h Brooks
 Cushing Patrick, 2nd hand card room, h 7 Sudbury
 Cutting G Frank, clerk Maple House, h Summer
 Geo F, prop Maple House, h Summer
 Dacey John, emp Assabet mills, b Mrs James Layden's
 Daley Wm, mill operative, b Mrs Sarah Hillis'
 Davis Geo F, engineer, h Powder Mill
 Thomas, mill operative, b Mrs Sarah Hillis'
 Dawson Mrs Margaret, h Concord
 Wm, depot carriage, h Concord
 Deane Thomas, 2nd hand in yard Assabet mills, h Cross
 Jennie S, milliner, h Maple
 John, lab, h Acton
 John B, periodical store, b Thos H Farrell's
 Thomas, mill operative, h Brooks
 Delaney Mrs James, h 4 Railroad
 Patrick, mill operative, h 3 Sudbury
 Mrs Ellen, weaver, h Main
 Demerteni Frank, emp Chas Devoto & Co nuts and fruit,
 rooms Mrs Ellen Cleary
 Denniston John E, boss fuller Assabet mills, h Main
 Robert P, dresser tender, h Concord
 Thomas C, boss dresser Assabet mills, h Main
 Wm R, mill operative, h Main
 Dettling Felix, farmer, h Parker
 Devine Patrick, emp Assabet mills, h River
 Thomas J, mill operative, h River
 Dillacore Timothy, mill operative, b Thos Fossell's
 Dimerey Arthur T, weaver, h River
 Chas, emp Assabet mills, h Thompson Court
 Docherty Angus, house painter, b Wm G Morris'
 Richard, carpenter, b Geo Carmichal's
 Doherty John, mill operative, h 8 Sudbury
 John Jr, mill operative, h 8 Sudbury
 Patrick, mill operative, h 8 Sudbury
 Dolan Patrick, attendant Amri Maynard's, h Beachmont
 ave
 Dona Michael, emp Assabet mills, b Mrs I Hall's

Donovan John, mill operative, h 4 Sudbury
Dooner Hugh, h Main
Doyle John, farm hand, emp and b Joel F Parmenter's
 John, lab, h Parker
 John W, emp Assabet mills, h Parker
 Mrs Margaret, h Main cor Pine
 Thomas, carpenter, h Parker
Drew Chas E, blacksmith, h Maple
Driscoll Michael, teaming and jobbing, h Pine
 Wm J, emp American Powder Co, h Pine
Duffy Michael J, emp Assabet mills, b Mrs A Myer's
Dugan C, emp Assabet mills, b Mrs I Hall's
 Timothy, farmer, h 2 Railroad
Dunn George, emp Assabet mills, b Mrs I Hall's
 John, weaver, b Richard H Casey's
 Wm, farm hand, emp and b A S Thompson's
Dunsmore John, mill operative, h River
Durkan Mrs Catherine, h Main
 Chas B, mill operative, h Main
Dyson Geo, spinner, h 21 Elm
Egan Mary, h Main
Eaton Roland L, loom fixer, h High
Edwards Joseph, blacksmith, h Thompson
 Joshua, emp Assabet mills, b H H Cheney's
Eich John S, emp American Powder Co, h Powder Mill
Ellam Frederick T, weaver, h Nason near Summer
Elliot Daniel, dresser tender, h Glendale
Erickson Peter, emp Assabet mills, h Glendale
Everett James, emp Assabet mills, b Mrs I Hall's
Fairbanks Albert G, emp American powder mills, h Pleasant
 Fred S, emp Assabet mills, h South
Farwell Frank, powder maker, h Powder Mill
 George, emp American powder mills, b Powder Mill
 boarding house
Farrell Thomas H, saloon boarding house, h Summer
Feeley Michael, h 4 High
Felch John, carpenter, b J F Wentworth's
Felthan Frank, emp Assabet mills, h Nason
Fennif Henry, emp Assabet mills, b H H Cheney's
Ferns Edward, night watchman, h Nason
Fish Mrs Ann, h Main

- Fish Mrs Lilla, weaver, h Main
 Fisher Richard, emp machine shop Assabet mills, h Summer
 Fitzpatrick Thomas, wool sorter, b Mrs J Layden's
 Fix John K, machinist, h Walnut
 Flannigan Martin, weaver, b Geo E Whitehouse's
 Fletcher John J, spinner, h River
 Peter M, presser Assabet mills, h 19 Railroad
 FLOOD GEO, livery stable, h Harriman Court
 Mrs Geo, h Harriman Court
 John W, overseer wet finishing Assabet mills, h
 Beachmont ave
 Floody Lawrence, emp Assabet mills, b Mrs A Myers'
 Flynn Mrs Catherine, h 12 Railroad
 Fowler Mrs Hattie A, h Nason
 Herbert B, farmer, h Elm Court
 FOWLER ORRIN S, undertaker, h Nason
 Fox James, giger, b P F Casey's
 Freeman Edw A, weaver, rooms Ira D Sherwood's
 Garfield M Howell, supt American powder mills, h Powder
 Mill
 Garlick Elijah W, clerk W B Case's store, h Concord
 Henry A, spinner, h Brook
 Thomas, h Concord
 Garret Joseph, b Chas Belcher's Jr
 Geary Robert, mill operative, b Mrs Sarah Hillis'
 Getchell Mrs Jennie, dressmaker, h 3 Railroad
 Gibbs Fred, house painter, b Ward Barnes'
 Fred, carpenter, b Maynard House
 Lyman, b Maynard House
 Gilroy John, mill operative, b Mrs Sarah Hillis'
 Ginell Israel, wool sorter, h Maple
 Glines Frank J, emp American powder mills, h Powder
 Mill
 Goding Gilbert H, h Acton
 Goodnow Elias K, h Main
 Goodsill Frederick H, farm hand, emp and b J H Vose's
 James T, teamster, h Powder Mill
 Gove Geo M, driver baker wagon, h Concord
 GOVE HEZEKIAH B, baker, h Summer cor Nason
 Graham Mrs Anna, h Nason
 Greeley Mrs Bridget, h 5 Railroad

- Greeley James, h 5 Railroad
 Green Chas, designer Assabet mills, h Maple
 John W, stone mason, h Acton
 Mrs Mary E, h Main
 Greenhalge James, emp Assabet mills, h 7 East cor Elm
 Greer Alexander, day watchman, h Maple
 Alexander Jr, engineer Assabet mills, h Main
 Gutteridge Mrs Mary, h Nason
 Wm H, book-keeper Assabet mills, h Brooks
 Haigh Samuel, weaver, b Richard H Casey's
 Haley Mrs Hannah, h Glendale
 Thomas, mill operative, b Mrs Sarah Hillis'
 Hall Mrs Isabella, boarding house, h Main
 Wm R, variety store, h Main
 Hanlon James, weaver, b Mrs Amelia Hartman's
 Hanna John, carpenter, h Maple
 Hannon Luke, carder, h 9 Sudbury
 Hansen Christian, emp Assabet mills, h 9 Percival
 Hans J, mill operative, b N Hansen's
 Newman, mill operative, h 6 Percival
 Peter, mill operative, h 8 Percival
 Hapgood James H A, carpenter, h Nason
 Myron E, well mason, h Nason
 Rufus, farm hand, emp and b C A Whitney's
 Rufus, carpenter, h Nason
 Hardcastle Frederick, mill operative, b T F Carey's
 Haire James N, clerk Assabet mills, h 2 Summit
 Mrs Jane A, h 2 Summit
 T Alfred, wool sorter, h 2 Summit
 Mrs Wm, h Maple
 Harriman Frank H, ice cream, Maynard Ice Cream Co, h
 Main cor Harriman
 John A, clerk, h Main cor Harriman Court
 John K, groceries etc, h Main cor Harriman
 Roland P, ice cream, Maynard Ice Cream Co, h
 Main cor Harriman
 Henry A, weaver, h Glendale
 Hart Geo H, machinist, h Parker
 Hartman Mrs Amelia, boarding house, h Main
 Geo P, clerk Assabet mills, h Main
 Harwood Harvey A, wool sorter, h Main
 Hastings Albert J, provisions, h Concord

- Hatch Chas E, hostler, h 4 Oak
 Chas H, baker, h Concord
- Haynes A G, farmer, h Percival
 Alfred, clerk, h Brooks
 Asahel H, clothing and gents' furnishing goods, h Percival
 Henry, farmer, h Boston Road
 James, farmer, h South
- HAYNES WARREN A, grain, cider and vinegar, Haynes & Tourtellot, h Maple
- Hayward F, emp Assabet mills, h 3 East
 Henry, spinner, h 3 East
- Henderson David W, livery and sale stable, h Acton
 Edward, teaming and jobbing, h Pleasant
 George H, loom fixer, h off Main
 John W, tin smith, h Pleasant
 Robert, h Acton
 Robert, spinner, b Henry Pringle's
 Wm S, wool sorter, h Summer cor Concord
- Hess Chas, emp American powder mills, b Powder Mill boarding house
- Hibberd Frank, wool sorter, h 6 East
- Higgins James, groceries, h 3 Summit
 Thomas, emp Assabet mills, h Acton
- Hilferty James B, boot and shoe maker, h Main
- Hill James, wool sorter, b David Miller's
 Wm, farm hand, emp and b Benj Smith's
- Hillis John, lawyer, h Main
 Mrs Sarah, boarding house, h Main
- HILLIS THOMAS, lawyer, h Main
- Hird Joseph, emp American powder mill, h Nason
 S Henry, emp American powder mills, h Nason
- Hodges Josep G, dresser, h 1 West
 Mrs Mary, h 1 West
 Samuel G, wool sorter, h 1 West
- Holland Thomas, emp Assabet mills, b Frank S Johnson's
- Holmes Chas D, photographer, b H H Cheney's
- HOLT ABNER D, stoves and tin ware, h Maple
 S Forrest, tin smith, h Summer
- Hooper Walter, emp Assabet mills, h Walnut
- Howard Allen M, belt fixer, b J F Wentworth's
 Orrin J, belt fixer, b J F Wentworth's

- Hughes Arthur, clerk Maynard House, b same
Hunt James, emp American powder mills, h Summer cor
Acton
Hunter Mrs Mary, h Main
Huntoon Ellen M, Powder Mill boarding house, h Powder
Mill
Hurley Mrs Ellen, h Warren
Mary, h Warren
Michael, weaver, h Warren
Hyde Lewis W, wool sorter, h 4 Percival
Irwin Wm H, cigar maker, b Maynard House
Jackson Mrs Elizabeth, h 9 Elm
Henry, emp Assabet mills, h 9 Elm
James Mrs Sarah, h 5 Summit
Jameson George W, weaver, h 7 Percival
Jannell Joseph, wool sorter, h Pleasant
Mrs M E, milliner, h Pleasant
Johnson Alfred, mill operative, h River
Andrew, mill operative, b R Lund's
Benjamin F, druggist and apothecary B F Johnson &
Son, h Main
Ernest M, post master, druggist and apothecary, B
F Johnson & Son, h Main
Frank S, clerk Rich & Vineca, h Main
Hans P, mill operative, b C Hansen's
Thomas, mill operative, b James McInnis'
Jones Geo N, shipper Assabet mills, h Maple
John, farm hand, b P B Moore's
Theodore A, machinist, h 1 Summit
Jordan Geo W, expressman, h Brooks
Jormala Matts, mill operative, h 13 Percival
Joyce John, h Spring Lane
Wm H, loom fixer, h Spring Lane
JUBB JABEZ W, furniture dealer, b Samuel King's
Kaler George P, emp Assabet mills, h Thompson Court
Keefe Frank, mill operative, h Cross
Keegan Mrs John, h 17 Railroad
Richard H, spinner, h 17 Railroad
Thomas, fish dealer, h 17 Railroad
Kelly Patrick J, mill operative, h 15 Railroad
Kelsey Lettie, weaver, h Main
Roxy, dressmaker, b Samuel King's

- Kempton Rudolph, mill operative, b Mrs Sarah Hillis'
 Kennedy John L, emp Assabet mills, h Pleasant
 Robert, emp Assabet mills, h 18 Sudbury
 Mrs Sarah, boarding house, h 1 Railroad
 Kenney James, h Spring Lane
 John, spinner, h Nason
 Kenny Michael, h 13 Sudbury
 Wm J, spinner, h Nason
 Kennison Francis M, emp Assabet mills, h Maple
 Kerr Joseph, spinner, b David Miller's
 Kershaw Harry, emp M H Garfield, b Powder Mill board-
 ing house
 J Frank, wool sorter, h Brooks
 Kiernan John J, loom fixer, h Pleasant
 Kimmel John, weaver, h Warren
 King Alfred, spinner, h 6 Thompson
 Mrs Jane, h Nason
 John, spinner, b H H Cheney's
 KING SAMUEL 2ND, livery and boarding stable, b T F
 Farrell's
 Samuel Jr, cooper American powder mills, h Brooks
 Kivlehan Peter J, bar tender, b Mrs James Layden's
 Klatzer Chas, spinner, h Nason
 Knight Alfred P, emp and b A J Hastings'
 Kranberry Edward, weaver, h Main rear Hillis store
 Fred W, weaver, h River
 Mrs Mary, mill operative, h Main over Hillis' store
 Robert, weaver, h River
 Lamson Lucinda L, h Concord
 Lane Mrs Mary Ann, h Main
 Edwin, boot and shoe maker, h Main
 Langis Geo, farm hand, emp and b Geo Whitney's
 Larkin Mrs Agnes J, mill operative, h River
 Law Mrs Rachel, h Front cor Sudbury
 Sadie C, clerk Assabet mills, h Front cor Sudbury
 Lawler John, loom fixer, h Acton
 Lawson Peter C, mill operative, R Lund's
 Lawton Edward, spinner, h Brooks
 John, spinner, h Brooks
 Patrick, mill operative, h Boston Road
 Samuel, dresser, h Brooks
 Leary Connelius, section man F R R, h High

-
- Ledyard Henry, spinner, h Nason
 Ledger Solomon, emp Assabet mills, h 3 West
 Lee Thomas, emp American powder mills, b Powder Mill
 boarding house
 Mrs Wm, h Main
 Lehy Thomas, wool sorter, h 9 Railroad
 Lemoine David P, spinner, h Acton
 Lawrence, spinner, h off Glendale
 Leyden Coleman, emp Assabet mills, h Main
 Mrs James, boarding house, h Harriman Court
 Libby Augustus, emp American powder mills, b Powder
 Mill boarding house
 Lingley Geo, lab, b James E Wilson's
 Lithgrow John A, emp Assabet mills, h 4 East
 Mrs Mary, h 4 East
 Little Arthur, mill operative, b Chas Dimery's
 James E, dresser, h Nason
 James H, dresser, h off Acton
 John, dresser, h Nason
 Wm, dresser, h Nason
 Livingston Douglas, emp American powder mills, b Powder
 Mill boarding house
 Lockwood Mrs Martha, h Acton
 Loewe Julius, wholesale and retail liquor dealer, h Herman
 Court
 Long Dennis, saloon, h Harriman Court
 Walter L, wool sorter, h Walnut
 Lord James B, overseer wool room Assabet mills, h 3 Hill-
 side
 Lovell Geo, wool sorter, b J C Reed's
 Lowe Joseph, emp Assabet mills, b Mrs I Hall's
 Lund Rosmus, mill operative, h 10 Percival
 Lynch Bryan, mason's helper, h Main
 James C, wheelwright, h Boston Road
 Lyons Dennis, emp Assabet mills, T H Farrell's
 James, farmer, h Summer
 Mrs Joanna, h Warren
 Mr, emp Assabet mills, b Mrs I Hall's
 John, emp Assabet mills, h 16 Railroad
 John, wool sorter, h 18 Railroad
 Mahler Philip, finisher, b Michael Crowley's
 Mahon Edward, emp Assabet mills, h Sudbury

Mahoney Connelius, hair dresser, h Summer

Dennis, weaver, h Glendale

Mrs Ellen, h Summer

*my grand father
Ruth Bradley*

James C, stationary engineer, h Powder Mill

*Born in
Sudbury, Mass*

Jeremiah, spinner, h 8 Railroad

Mrs Margaret, h Glendale

Michael, emp Assabet mills, h Main cor Pine

Wm, clerk, h Summer

Malcom Arthur, machinist, b R H Casey's

Mallinson James H, mill operative, h 20 Sudbury

Mrs Jane, h 20 Sudbury

Manley John S, wool sorter, h Brooks

Mann Edwin, wool sorter, h Maple Court

Manning James J, mill operative, h River

Michael F, mill operative, h River

Manson Elias, mill operative, b M Jormala's

Marble Waldo B, emp Assabet mills, b Parmenter's

Marchant Eugene, emp Assabet mills, h Pleasant

Mrs Martha, mill operative, h Pine

Oliver J, loom fixer, h 19 Sudbury

Samuel, weaver, Prospect Court

Samuel K, weaver, h Prospect Court cor Acton

Marra John J, wool sorter, h 6 Railroad

Marsh E, M D, physician and surgeon, h Main

Marston Ambrose, loom fixer, h 5 West cor Elm

Mrs Nancy, h Parker

Wm D, emp Assabet mills, h Parker

Martin Adelbert A, mill operative, h Concord

A W, dresser, h Maple

Martin —, emp Assabet mills, b Mrs I Hall's

Joseph, emp Assabet mills, b Mrs James Layden's

Warren, overseer box shop Assabet mills, h Maple

Mason Wm H, farmer, h Summer

Matherson Elmer, emp Assabet mills, b Peter Erickson's

May John, mason's tender, h Summer

Maynard Amory, h Beachmont ave

Amory 2nd, selling agent Assabet mills, h Main

Chas W, farmer Summer Hill Farm, h Summer

Geo H, farmer Summer Hill Farm, h Summer

MAYNARD LORENZO, agent Assabet mills, h Beachmont ave

Lucius H, farmer, h Summer

- Maynard Mrs Lydia, h Summer
MAYNARD WM H, supt Assabet mills, h Beachmont
ave
McAuliff Connellius, cloth inspector, Spring lane
McAvory David, mill operative, h 13 Percival
McCabe Daniel F, baker, h Summer
McCaig Edward, cigar maker, b Mrs James Layden's
McCarthy Mrs Bridget, h River
Daniel, h River
John, emp Assabet mills, h Warren
John, mason, h River
Michael, emp South Acton, b Edward Murphy's
McCleary John, wool sorter, h Parker
Mrs Nancy, h Nelson
Sarah, h Nason
McClure John, h River
McCormick, emp Assabet mills, h Thompson's court
Geo T, hair dresser, h Sudbury
Henry, spinner, h Railroad
James F, house painter, h Thompson's court
McDougall Mrs Anna, h 23 Elm
McGown David H, ice cream, h Front
Hugh H, variety store, h Front
Wm 2nd, hand card room, b Mrs Bridget Greeley's
Wm H, cigar maker, b Maynard House
McGrail Eddie, porter Maynard House, b same
McGRAIL HUGH H, prop Maynard House, h Summer
McGrath James, farmer, h Summer
James M, emp American powder mills, h Summer
McGregor James, emp Assabet mills, b J Brinston's
McGuire Thomas F, groceries and provisions, h Summer
McInnis James, weaver, h Maple
McIntyre Alexander, emp Weatherbee's market, b C F Ca-
hill's
McKenna John J, weaver, b J T Wentworth's
McKenzie James, carpenter, b James McInnis'
Kennath, emp Julius Low, b Geo Chamagne's Jr
McKinsey Wm, emp Assabet mills, b Mrs Jas Layden's
McLaughlin Mrs Susan, weaver, h Harriman Court
McMahon John, blacksmith's helper, h 6 Sudbury
McPhial Jennie, h Walnut
McQuillen John, emp Assabet mills, h Glendale

- McWilliams Thomas, emp American powder mills, h Powder Mill
- Meade Patrick, h off Glendale
- Mears Mrs Francis, h Main near Canal
 Hugh F, emp Assabet Mills, h Main near Canal
 Joseph, mill operative, h Canal cor Main
- Meley Mrs Edward, h Main
 Stephen, emp Assabet mills, h 9 Percival
- Meskill James W, b Thos H Farrell's
- Midwood Mrs Jennett, h 1 Oak
- Miller Mrs Ann, weaver, h River
 David, boss picking room Assabet mills, h 1 Front
 John, h River
 Mr, emp Assabet mills, b Mrs I Hall's
 Thomas, hair dresser, h River
- Mitchell James, mill operative, h 8 Percival
 Peter, spinner, h 8 Percival
- Monodict Mrs Mary, h Boston Road cor Main
- Monroe Chas F, mill operative, h 12 Railroad
- Moore Daniel F, baker, h Glendale
- MOORE JOHN O, baker, h Summer
 Mrs Margaret, h Glendale
 Mrs Mary, h Glendale
 Patrick B, 2nd hand card room, h Nason
 Patrick G, baker, h Glendale
 Wm, weaver, b R H Casey's
- Moran Patrick V, teamster Assabet mills, h Sudbury
- Morgan James J, emp Assabet mills, h Thompson Court
 John, weaver, h Thompson Court cor Sudbury
 Mrs Mary, b Mrs B McCarthy's
- Morris Geo S, spinner, h Main
 Wm, emp Assabet mills, rooms Main over Weather-
 bee's market
 Wm G, spinner, h Nason
- Morrison Henry F, lab, h Boston Road cor Main
- Morton George, emp Assabet mills, b Mrs I Hall's
- Mosier Andrew, carpenter, b Richard H Casey's
- Moynehan Daniel, farmer, h off Summer
- Moynihan Francis, mill operative, h Pine
 John, loom fixer, h High
 Mrs Mary, h Harriman Court
 Timothy, mill operative, h Pine

Muldoon Edward, farm hand, emp and b A S Thompson's
Mullen Fred, emp Assabet mills, b Mrs I Hall's

Michael, h Pine

Mrs Sarah, h Harriman Court

Murdock Daniel, weaver, b Wm Bishop's

Murphy Connelius, h Pine

Connelius, emp Assabet mills, h 2 Front

Edward, emp South Acton, h Pine

John, mill operative, b Mrs Sarah Hillis

Mrs Mary, h Summer

Michael, teamster Assabet mills, b Mrs B Greeley's

Richard, weaver, b Connelius Murphy's

Timothy, emp Assabet mills, h Pine

Murray Thomas, mill operative, h 14 Railroad

Myers Mrs Annie, h Main near Catholic ch

Christopher, farm hand, h Summer

Nagle Garret, h Main

Naylor Mrs Janet, h Summer

Thomas, boots and shoes, h Main cor Nason

Nee Bartly, yard hand Assabet mills, h 3 Percival

Nelson James, spinner, b Sarah McCleary's

Jens, b R Lund's

Newcomb Henry, emp Assabet mills, h Maple

Newman Frank, weaver, h Percival

Newton Augustus, farmer, h off Percival

Nicholds Robert, watchman, h 5 Thompson

Noonan Patrick, emp Assabet mills, b Mrs I Hall's

Nutting Edward M, emp Assabet mills, b J Brinstin's

Nyman Frank W, house painter, h Maple

O'Brien Daniel, lab, h Harriman Court

Delia, emp and b Chas Randall's

John, fish etc, h Pine

Thomas, mill operative, h 10 Sudbury

O'Connor James, emp Assabet mills, h Sudbury cor Thompson's Court

Mrs Joanna, h High

Morris, lab, h Pine

O'Daniel Michael, section man F R R, h Maple Court

O'Donnell Annie, weaver, h Pine

O'Donohue James, mill operative, h Main

Oliver Wm W, watchmaker and jeweller, h Summer cor Nason

- Ollis Mrs Mary, h Concord
 Olsen Christian, b R Lund's
 Peter, mill operative, b N Hansen's
 O'Neil Chas, mill operative, h 4 Front
 Chas Jr, weaver, h 4 Front
 Owen Annie, h Spring Lane
 Mrs Mary, weaver, h 12 Sudbury
 PACKARD CHAS H, watchmaker and jeweler, b Mrs A
 Hartman's
 Page Prudence, h Concord
 Parker Clinton, mill operative, b Mrs Sarah Hillis'
 Elmore, emp Assabet mills, b Wm G Morris'
 Geo, h Concord
 George, overseer waste room Assabet mills, h 5
 East
 Parkin Hiram, emp Assabet mills, h 5 East
 Joseph, emp Assabet mills, rooms R Fisher's
 Wm, wool scourer, h Hillside cor Parker
 Wroe, emp Assabet mills, h Glendale
 Parkinson James, machinist, h Thompson
 Parks Daniel, lab, h Prospect Court
 Malcomb, weaver, h Prospect Court
 Parmenter D W, teamster, h Concord
 Joel T, farmer, h Acton
 John W, carpenter, h Summer
 Richard W, clerk co-operative store, h Brooks
 Washington, farmer, h Parker
 Patterson Daniel, dentist, h Nason cor Main
 Paton Wm, house painter, h Nason
 Patterson Peter, overseer wool room Assabet mills, b R H
 Casey's
 Penny John, spinner, b Daniel Cronan's
 PERSONS CHARLES H, dealer musical instruments, h
 Main
 Peters Warren S, asst supt Assabet mills, h Main
 Phelps Austin, wool sorter, h Concord
 Phillips John E, wool sorter, h 2 Oak
 Pike Byron D, weaver, b E F Pike's
 Edgar F, loom fixer, h 1 East
 Pineo Mrs Anna, h Parker cor Walnut
 Platt Chas H, mill operative, b Mrs John Platt's
 Mrs John, h 2 Sudbury

- Pond Frank A, spinner, h 4 Thompson
 Potter Mrs Samuel, h Maple
 Pow Andrew, emp Assabet mills, b Mrs Jas Layden's
 Powers James, lab, h 5 Sudbury
 Mrs Patrick, h 5 Sudbury
 Patrick, h 5 Sudbury
 Pratt Levi L, h Nason
 Prest Wm G, fireman Assabet mills, h Elm cor Summer
 Prince Chas, mill operative, h Maple
 John, mill operative, h Maple
 Pringle Henry, spinner, h 5 Percival
 Robert, mill operative, b Robert Kennedy's
 Punch John E, emp Assabet mills, h Glendale
 Quinn John, mill operative, h Main
 Wm, mill operative, b Thos H Farrell's
 Raferty Mrs Mary, h Main
 Rand Frank D, teamster, h Powder Mill
 Randall Albert E, loom fixer, h Summer
 Chas, farmer, h Concord
 Fred, weaver, b Frank Hibbard's
 Rarlson Gustus H, emp Assabet mills, b Peter Erickson's
 Ratcliffe John, wool sorter, h 5 Summit
 Reagan Thomas, gardener, h Maple Court
 Redfearn Joseph, h Main
 Reed James C, house painter, h Glendale
 Joseph W, lawyer, h Summer
 Reeves Walter, machinist, b Mrs Rachel Law's
 Reynolds Joseph, spinner, h Acton
 Rhule Frank, spinner, h Concord
 Fred, spinner, b Frank Rhule's
 Rich Frank U, physician and surgeon, h Summer
 RICH HENRY F, dry goods, groceries etc, Rich & Vin-
 eca, b Maple House
 Richardson Jesse, h Nason
 Riley James E, carder, h Nason
 Riordan Daniel, lab, h Parker
 Daniel Jr, lab, h Parker
 Roberts Chas H, overseer drying room Assabet mills, h
 Brooks cor Concord
 Joseph, weaver, h Walnut
 Robertson Findley T, bill poster and janitor school building,
 h Main

-
- Robertson James, dresser tender, h Maple Court
 Robinson John, market gardener, h Summer
 Walter, market gardener, h Summer
 Rockford Frank, mill operative, h Maple
 Rogers Edward T, clerk, b Joseph Hird's
 Sumner, emp American powder mills, h Powder
 Mill
 Rollinson Joseph, weaver, h Acton
 Rooney Martin, farmer, h Boston Road cor Main
 Ross Geo, spinner, b H Pringle's
 Wm, clerk Rich & Vineca, b Mrs A Hartman's
 Rouse Thomas, lab, h Nason
 Rowell Wm, mill operative, b Mrs S Hillis'
 Rowley Wm A, emp Assabet mills, h Boston Road
 Royes Jones, carpenter, b J T Wentworth's
 RUSSELL ALVIN D, manager co-operative store, h
 Nason
 Newton, spinner, b Joseph Mear's
 Ryan Daniel, emp and b Chas Randall's
 Salisbury Frank H, book-keeper Assabet mills, h Brooks
 Geo N, station agent, h Maple
 Sanders Chas H, emp American powder mills, h Main
 Mrs Mary T, h Pleasant
 Sanford Isaac L, emp Assabet mills, h Glendale
 Wm, ship carpenter, h Glendale
 Sawyer Edward M, farmer, h Summer
 Silas A, express driver, b Frank S Johnson's
 Saxton John, emp Assabet mills, h 10 Railroad
 Scamell Walter, weaver, b F W Simons'
 Schwartzenburg Henry, weaver, h 11 Percival
 Scott James, emp Assabet mills, b Mrs I Hall's
 Michael, weaver, h off Main
 Sculley Thos E, emp Assabet mills, h Main
 Wm H, card grinder, h Pine
 Severson Elias, harness maker, h Walnut
 Sharpe David, emp Assabet mills, b Mrs James Layden's
 John, h Main
 Sharron Henry, weaver, b Mrs James Layden's
 Shattuck Sidney B, carpenter and builder, h Parker
 Shaw Lewis N, spinner, h 23 Elm
 Samuel, wool sorter, b John F Wentworth's
 Shea Mrs Hannah, h 21 Railroad

- Sheridan James, teamster Assabet mills, h Main
 Sheardin Peter, mill operative, b Mrs Sarah Hillis
 Shearer Herman, mill operative, h 14 Percival
 Sheehan Dennis, lab, h Glendale cor Warren
 Dennis J, spinner, h Glendale cor Warren
 Sherwood Ira D, soap mfr, h Warren cor Pleasant
 Wm, h Main
 Shine Jeremiah, fireman Assabet mills, h River
 Silcocks Henry, emp Assabet mills, h Walnut
 Simms B C, wool sorter, h River
 Frederick W, emp Assabet mills, h 15 Elm
 Singer James E, emp Assabet mills, h Pleasant
 Mrs Sarah A H, h Pleasant
 Singleton Joseph, weaver, h Summer
 Slyvert Chas A, stove and furnace repairer, h Glendale
 Smethurst Geo, overseer spinning Assabet mills, h 5 Hillside
 cor Oak
 Geo L, overseer spinning room Assabet mills, h 5
 Hillside cor Oak
 Smith Mrs Albert D, h Concord
 Benjamin, farmer, h Boston Road
 Chas, wool sorter, b Edward P Smith's
 Edward P, wool sorter, h 22 Railroad
 Mrs Eliza, h Boston Road
 James, mill operative, b Mrs Sarah Hillis'
 Josep B, steam fitter, h 1 High
 Joseph T, carpenter, h Main
 Mrs M A, h Nason
 Parley M, overseer Assabet mills, b J F Went-
 worth's
 Wm, mill operative, h 12 Percival
 Wm S, loom fixer, h 6 Summit
 Smithson Angelo L, hair dresser, h Main
 Sohlmer Conrad, emp Assabet mills, h 3 Oak
 Spain Dennis, emp Assabet mills, h Thompson
 Matthias, emp Assabet mills, h Thompson
 Mrs Susan, h Thompson
 Stanley Asa B, farmer, h Parker
 Stanlon Joseph, wool sorter, h Maple Court
 Stark Albert, mill operative, b Alfred Johnson's
 Starling Mrs Esther, h 19 Elm
 Robert, spinner, h Nelson cor Summer

- St Clair Leo, emp Assabet mills, h 3 Railroad
 Stolpre Emil, emp Assabet mills, b Augustus Bergstrain's
 Stott Robert, mill operative, b Mrs Sarah Hillis'
 Stuart Chas B, h Main
 Connelius H, dry and fancy goods etc, h Main
 Geo, emp Assabet mills, h Nason
 Sullivan Connelius J, card grinder, h Concord
 Daniel, fireman Assabet mills, h Main cor Spring Lane
 Dennis, mill operative, b James Sullivan's
 Mrs Ellen, h Maple Court
 James, emp American powder mills, b Powder Mill boarding house
 James, emp Assabet mills, h Pine
 John, lab, h Main cor Spring Lane
 Patrick, mill operative, b Mrs Sarah Hillis'
 SULLIVAN PATRICK J, tailor, h Nason
 Thomas, weaver, b J F Wentworth's
 Sunderland John, P O clerk, b Mrs Amelia Hartman's
 Swanton Geo W, house painter, h 3 Thompson
 Sweeney Chas H, house painter, h Main
 James, carpenter, h Spring Lane
 James F, lawyer, h Main
 Michael, overseer yard Assabet mills, h Main
 Thomas A, h Main
 Sylvester Edwin, house painter, b Johnston Brinstin's
 Edwin K, house painter, b Mrs J A Toomey's
 Syrea Anders, mill operative, b Matts Jarmala's
 Tallis Patrick, card striper, b Mrs Bridget Greeley's
 Tallon Frank, blacksmith, h Nason
 James, carpenter, h Nelson
 Tarbell Ezra S, machinist, h Maple
 Tarpey Patrick J, mill operative, h 6 Percival
 Taylor Arthur, house painter, b J F Wentworth's
 Mrs Ellen, nurse, h Nason
 Garvey, emp Assabet mills, b Mrs E Starling's
 Garvin, emp Assabet mills, h Brooks
 Herbert, finisher, b J F Wentworth's
 Joseph, spinner, h 5 Front
 Leaverett, weaver, b Mrs Amelia Hartman's
 Thomas, carpenter, h Nason
 Wm, farmer, h off Boston Road

- Thane John, tin smith, h Summer cor Acton
 Thayer Geo, wool sorter, b J F Wentworth's
 Thimot Kate, dress maker, h Nason
 Thompson Aaron S, farmer, h Boston Road
 John, farm hand, emp and b C A Whitney's
 John O, farm hand, h off Summer
 Tifft Wm G, h Parker
 Tilley Edward D, overseer weave room Assabet mills, h
 Maple
 Tilton Edward F, stone mason, h Summer
 Walter E, carpenter, h Summer
 Tobey Mrs Sophia, h 4 Oak
 Toomey Mrs J A, boarding house, h Main
 Michael, lab h High
 TOURTELLOT ALDIS, grain, cider and vinegar Haynes
 & Tourtellot, b Chas Randall's
 Towne Lewis S, wheelwright, h Concord
 Townsend Wesley, wool sorter, h Nason
 Trainer Mrs Hannah, h Acton
 Trent Mrs R P, h 3 Summit
 Tripp Geo E, wool sorter, b J F Wentworth's
 Trunbull John, dyer, h Walnut
 Tucker John Y, blacksmith, h Thompson
 Tufts John, policeman, h South
 Turner John, h Summer
 John Jr, wool sorter, h Brooks
 Uhl Michael, yard hand Assabet mills, b Wm Smith's
 Usher Chas, spinner, b Geo S Morris'
 Edward, spinner, b Chas Demery's
 Veitch Alexander, overseer picking room Assabet mills, h
 2 Hillside
 VINECA ELIJAH, dry goods and groceries Rich & Vin-
 eca, rooms F F Robertson's
 Vose John Henry, farmer, h South cor Puffer
 Mrs Sarah R, h South cor Puffer
 Wagner James, mill operative, h Cross
 John, mill operative, h Cross
 Thomas, house painter, b Wm Wagner's
 Thomas, lab, h Cross
 Wm, night watchman, h 2 High
 Walcott Henry, carpenter, h 1 Sudbury
 Waldron Michael, mill operative, h Canal

-
- Walker Arthur E, farmer, h Parker
 Benjamin, mill operative, b Mrs Sarah Hillis'
 Christopher, mill operative, b Mrs Sarah Hillis'
 Joseph, mill operative, b Mrs Sarah Hillis'
 Wall John, h Summer
 Mrs Mary, h Summer
 Michael, house painter, h Summer
 Warren Daniel, h Warren
 Mrs Ellen, h Warren
 Warwick James, M D, physician and surgeon, b Maynard
 House
 Watson Mrs Abigail, Powder Mill boarding house, h Powder
 Mill
 Chas E, blacksmith, h Summer
 Weaving Geo, teamster, h Nason
 WEBSTER JOHN T, dry goods etc, b C E Drew's
 Wellington Chas, mill operative, h Front
 Wellman John, emp Assabet mills, b Mrs I Hall's
 Wells Chas W, apothecary, h Brooks
 Wentworth John F, boarding house, h Main
 Wetherbee Chas W, provisions H M Wetherbee, h Spring
 Lane
 Henry M, provisions, h Spring Lane
 John H, provisions H M Wetherbee, h Spring Lane
 Reuben L, h Spring Lane
 Whalen Bernard D, emp Assabet mills, b T F Casey's
 Whitcomb Waldo, clerk, b A H Haynes'
 White John H, hostler, h 1 Thompson
 Robert G, emp Assabet mills, h off Boston Road
 Wm Geo, h High
 Wm H, lab, h High
 Whitehead Ralph, overseer weave room Assabet mills, h 1
 Hillside
 Whitehouse Geo E, weaver, h Concord cor Brooks
 Whitman Chas B, wool sorter, h Brooks
 Whitney Artemas, farmer, h Main
 Calvin A, farmer, h off Acton
 Chas, agent Singer sewing machine, h Spring Lane
 Elizebeth, dress maker, h Acton
 Frank F, ice, h Main
 Geo, farmer and milk man, h Elm Court
 Geo A, teamster, h Acton

Whitney Harriet, h Acton
 John M, farmer, h Maple
 Wignall Wm, pastor Methodist church, h Walnut
 Wilcomb Newell D, farmer, h Boston Road
 Wilder Frank, dresser tender, b J J Morris'
 Williams James, mill operative, b J Brinstin's
 Wilson James E, fireman Assabet mills, h High
 Joseph, night watchman Assabet mills, h Harriman
 Court
 Lucius D, wool sorter, h 7 Elm
 Paul, machinist, h Walnut
 Robert, 2nd hand spinning room Assabet mills, h
 Pleasant
 Samuel, emp American powder mills, h Pleasant
 Winkley Mrs R, h Nason
 Wolfe John, spinner, b H H Cheney's
 Wollerschied Ernest, mill operative, h River
 John, weaver, h High
 Nicholas, mill operative, h River
 W Theodore, mill operative, h River
 Wood Chas A, carriage and sign painter, b Miss Devine's
 Woodart Asa S, carpenter and butcher, h Boston Road
 Wooley James, mill operative, b Mrs John Platt's
 Worsnip Wm, spinner, h 11 Elm
 Wouldhave Thomas, h Summer
 Wright Hattie, dressmaker, h Nason
 Joseph, mill operative, h Pine
 Samuel, wool sorter, h 3 High
 Yenson Daniel, b R Lund's

P. H. SHAUGHNESSY,
 HORSE SHOER & BLACKSMITH

CARRIAGE BUILDER AND PAINTER.

Repairing in all its branches.

Shop, Central Street, - - Stow, Mass.

J. L. PARKER,
CIDER • MANUFACTURER
FLORIST AND MARKET GARDENER.

Plants for the garden and house at low prices.

South Plain St., Rock Bottom, Mass.

THOMAS F. O'BRIEN,
Dealer in Choice
FAMILY GROCERIES



Flour, Grain, Crockery, Glass Ware, Dry Goods, Fancy Articles,
Boots, Shoes, etc., etc.

Main Street, Rock Bottom.

WILLIAM. F. HALE,
Grower and Dealer in
CRANBERRIES
Choicest variety and best Quality.

Delany Street, near Harvard, Stow, Mass.

MAYNARD BUSINESS DIRECTORY

Apothecaries.

Johnson B F & Son, Main.
Wells C W, Nason.

Bakers.

GOVE H B, Summer cor Nason. See page 8.
MOORE J O, Summer. See page 14.

Bands.

Brennan's orchestra, Peter Brennan, manager.
Maynard band, James B Lord, manager.

Bill Poster.

Robertson F F, Main.

Blacksmiths.

Tallon Frank, Acton.
TUCKER J T, Main. See page 18.
Watson C E, Summer.

Boarding Houses.

Brimstin Johnston, Main.
Casey R H, Main.
Farrell T H, Summer.
Hall Mrs Isabella, Main.
Hartman Mrs Aurelia, Main.
Hillis Mrs Sarah, Main.
Huntoon Ellen M, Powder Hill.

Kennedy Mrs Sarah, 1 Railroad.
Layden Mrs James, Harriman Court.
Toomey Mrs J A, Main.
Watson Mrs Abigail, Powder Hill.
Wentworth J F, Main.

Boot and Shoe Makers.

Helferty J B, Main.
Lane Edwin, Main.

Boots, Shoes and Rubbers.

Naylor Thomas, cor Main and Nason.

Carpenters and Builders.

Cheney L R, Brooks.

Cider and Vinegar.

Haynes & Tourtellot, Summer.

Cigar Mfr.

McCaig Edward, Harriman Court.

Clothing and Gents' Furnishing Goods.

CURRIE N & CO, Main. See page 6.
HAYNES A H, cor Summer and Nason. See page 1.

Dentists.

Houghton Dr W N, 7 Maynard blk.
Patterson Dr Daniel, cor Main and Nason.

Depot Carriage.

Dawson Wm, Concord.

Dressmakers.

Cheney Maria E, Thompson Court.
Clark Lillian M, 1 Railroad.

Getchell Mrs Jennie, 3 Railroad.
Kelsey Roxy, cor Main and Nason.
Thimot Kate, Nason.
Whitney Elizabeth, Acton.
Wright Hattie, Nason.

Dry and Fancy Goods.

Case Wm B, Main.
RICH & VINECA, Main. See page 1.
RIVERSIDE CO-OPERATIVE ASSOCIATION, cor
Nason and Summer. See page 3.
Stuart C H, Main.
WEBSTER J F, prop Boston store cor Nason and Sum-
mer. See page 1.

Expresses.

Jordan Geo W, Railroad.

Fish and Oysters.

Keegan Thomas, Summer.
O'Brien John, Pine.

Furniture and Carpets.

JUBB J W, Summer. See page 18.
RICH & VINECA, Main. See page 1.

Grain, etc.

HAYNES & TOURTELLOT, Summer. See page 1.

Grocers.

Harriman J R, cor Main and Harriman Court.
Higgins James, cor Main and Summer.
McGuire T F, Main.
RICH & VINECA, Main. See page 1.
RIVERSIDE CO-OPERATIVE ASSOCIATION, cor
Nason and Summer. See page 3.

Hairdressers.

Crowley M J, Summer.
Mahoney C, Main.
Smithson A L, Main.

Harnessmakers.

Severson Elias, Main.

Hotels.

Maple House, G F Cutting prop, Summer.
MAYNARD HOUSE, H H McGrail prop, Summer. See
page 10.

Ice.

Whitney F F, Main.

Ice Cream.

McGown D H, Main.
Maynard Ice Cream Co, Main.

Insurance.

Wells C W, Main.

Lawyers.

HILLIS THOMAS, Main. See page 10.
Reed J W, Summer.
Sweeney J F, Main. *Uncle of Mary Sweeney*

Livery Stables.

FLOOD GEO, Harriman Court. See page 17.
Henderson D W, Acton.
KING SAMUEL 2nd, Glendale. See page 13.
McGRAIL H H, Summer. See page 10.

Masons.

Green J W, stone, Acton.
Hapgood M E, well, Nason.
Tilton E F, Summer.

Milk Dealers.

Brooks C G, Summer Lane.
Whitney Geo, Elm Court.

Milliners.

Deane Jennie S, cor Main and Nason.
Jannell Mrs M E, Pleasant.

Musical Instruments.

PERSONS C H, Main. See back cover.

Newspaper.

Maynard Enterprise.

Nurse.

Taylor Mrs Ellen, Nason.

Painters.

Nyman F W, house, Summer.
Reed J C, house, Glendale.
Wood C A, carriage and sign, Summer.

Periodical Store.

Deane J B, cor Nason and Summer.

Physicians and Surgeons.

Marsh James E, M D, Main.
Rich Frank M, M D, Summer.
Warwick James, M D, Main.

Photographer.

Holmes C D, Main.

Provisions.

Crosby F L, corner Summer and Nason.
Hastings A J, Concord.

McGuire T F, Main.
Wetherbee H M, Main.

Saloons.

Farrell T H, Glendale.
Loewe Julius, Harriman Court.
Long Dennis, Harriman Court.

Sewing Machine Agent.

Whitney Chas, Spring Lane.

Soap Manufacturer.

Sherwood Ira D, cor Warren and Pleasant.

Stoves, Tinware, etc.

HOLT A D, Summer near Main. See page 14.

Surveyor.

Balcom Asahel, Parker.

Tailor.

Bratherston A H, Acton near Pleasant.
CURRIE N & CO, Main. See page 6.
SULLIVAN P J, Maynard block, Main. See page 10.

Teaming and Jobbing.

Brown G F, Acton.
Driscoll M, Pine.
Henderson E, Pleasant.

Undertaker.

FOWLER O S, Nason. See page 13.

Variety Stores.

Hall Wm R, Nason.
McGown H H, Main.

Watch Makers and Jewelers.

Oliver W W, Summer.

PACKARD C H, Main. See back cover.

Wheelwrights.

Lynch J C, Main.

Towne L S, Concord.

Wood, Etc.

HAYNES & TOURTELLOT, Summer. See page 3.

Woolen Goods Manufacturers.

ASSABET MANUFACTURING CO, Main. See page 2.

FOLSOM & WHEELER,

Dealers in

FLOUR, GRAIN, FEED, BALED HAY

Wood, Lumber, Land Plaster, Fertilizer, and Grass Seeds,

CHOICE GROCERIES,

Also Manufacturers of Cases, Boxes, etc. Sawing and Grinding done to order.

Stow, - - Mass.

OLIVER TAYLOR & SON,

DEALERS IN

PURE MILK



Taylor Street, Stow, Mass.

B. W. GLEASON & SONS,

Woolen Manufacturers of

PLAIN ^{AND} TWILLED FLANNELS

SHAKER FLANNELS AND DRESS GOODS.

Rock Bottom, Mass.

J. S. FLETCHER,

Established 1824.

Dealer in

DRY ^{AND} FANCY GOODS
GROCERIES,

Flour and Grain, Field and Garden Seeds, Fertilizers,

Boots, Shoes & Rubbers

Drugs, Medicines, Paints and Oil,

Hardware, Farming Tools, Canned Goods, etc., etc.

Stow Centre, Mass.

DR. A. C. LIVERMORE,

PHYSICIAN AND SURGEON

Office Hours 1 to 2 p.m.

Central Street corner Maynard, Stow (lower village).

STOW STREETS, ETC.

Boxborough, from West Acton to Boxborough line.
Box Mill, off Rock to res. of N. A. Newhall.
Central, from Maynard line to Bolton line.
Crescent, from Central to Central at Stow Centre.
Cross, from So. Acton to Orchard.
Davis Lane, from So. Plain to East Plain.
Delaney, from Harvard to Central.
East, from Central to Maynard.
East Plain, from So. Plain to Maynard line.
Elm, off Rock Bottom, southeasterly.
Gleason, off Main, near Gleason's factory.
Harvard, from Central to Harvard line.
High, from Main to Wilkins.
Hudson, from So. Central to Bolton line.
Main, from Rock Bottom and Whitman to Hudson line.
Marlborough, from Central to Hudson line.
Maynard, from Central to Maynard line.
Mill, from Central to Rock Bottom.
Orchard, from West Acton to Acton line.
Packard, from Central to Boxborough.
Railroad,
Rock Bottom, from Central to Main and Whitman.
School, from Harvard to So. Central.
Short, from Marlborough to Walcot.
So. Acton, from Central to Acton line.
So. Central, from Central to Central near Bolton line.
So. Plain, from Rock Bottom to Sudbury.
Sudbury, from Hudson line to Sudbury line.
Summer, from Central to Maynard line.
Taylor, from Boxborough to Harvard.
Walcot, from Rock Bottom to Hudson line.
West Acton, from Crescent to Acton line.
Whitman, from Main across So. Plain to Rock Bottom.
Wilkins, from Main to Hudson line.

STOW POST OFFICES.

Rock Bottom.

Mails close 6.40 a. m. and 12.40 p. m.
Mails arrive 9.15 a. m. and 6.50 p. m.
Office open from 6 a. m. to 9 p. m.
Thomas F. O'Brien, P. M.

Stow.

Mails close 6.30 a. m. and 4.15 p. m.
Mails arrive 9.30 a. m. and 6.30 p. m.
Office open from 6 a. m. to 8.30 p. m.
J. S. Fletcher, P. M.

STOW SCHOOLS AND TEACHERS.

Hale High School, I. H. DeWolf, Prin.
Centre, Mrs. S. M. Lawrence.
Lower Village, Bertha F. Lawrence.
West District, Flora A. Whitcomb.
Grove District, Hattie B. Faxon.
Rock Bottom District, May L. Smith, Gertrude E. God-
ing.

STOW CHURCHES,

First Parish, Unitarian.

Pastor, Rev. J. S. Moulton.

Parish Committee, J. S. Fletcher, A. J. Smith, S. A. Lawrence.

Treasurer and Collector, A. B. Evans.

Clerk, Charles A. Whitney.

Sunday Services, 10.45 a. m., 7.30 p. m.

Sunday School immediately after morning service.

S. S. Supt., Charles A. Whitney.

Asst. Supt., A. J. Smith.

Sec. and Treas., Addie Whitney.

LADIES' SEWING CIRCLE.

Mrs. U. M. Lewis, Pres.

UNITY CLUB.

I. H. DeWolf, Pres.

LEND-A-HAND CLUB.

Rock Bottom Methodist Episcopal.

Main Street.

Pastor, Rev. S. L. Rodgers.

Trustees, B. F. Folsom, L. H. Allen, J. C. Hale, Chas. W. Gleason, L. F. Priest.

Stewards, L. H. Allen, B. F. Folsom, John Shearman, J. C. Hale, A. H. Gleason, Chas. L. Allen.

Treasurer, Chas. W. Gleason.
Sexton, John Shearman.
Sunday Services, 10.45 a. m., 6.45 p. m.
Young People's Meeting 6 p. m.
Sunday School 12 m.
S. S. Supt., A. H. Gleason.
Ass't Supt., B. F. Folsom.
Librarian, Chas. L. Allen.
Ass't Librarian, Sarah Illingworth.
Sec., Mary S. Folsom.
Treas., Mrs. Maria Darling.
Friday evening prayer meeting 6.45.

LADIES' SOCIETY.

Pres., Mrs. Chas. W. Gleason.
Secretary, Mrs. Mary A. S. Maynard.

YOUNG PEOPLE'S LITERARY SOCIETY.

Pres., Josie Beede.
Sec., Mabel A. Walcott.

LADIES' MISSIONARY SOCIETY.

Pres., Mabel A. Walcott.

ROCK BOTTOM LIBRARY ASSOCIATION.

Main street.
Contains about 750 volumes.
President, C. W. Gleason.
Vice President, C. N. Murdock.
Secretary, A. H. Gleason.
Treasurer, A. D. Gleason.
Librarian, J. F. Craft.

STOW SOCIETIES.

Home Circle.

B. W. GLEASON COUNCIL No. 77.

Meets 2d and 4th Wednesday evenings of each month in Gleason's Hall.

Leader, L. F. Priest.

Vice Leader, S. F. Smith.

Past Leader, A. P. Walcott.

Sec., Charles Allen.

Lecturer, Mrs. Josephine Smith.

Fin., Mabel Walcott.

Treas., F. L. Parker.

Guide, Mrs. Sarah Folsom.

Warden, Wm. H. Brown jr.

Sentinel, Lewis Parks.

I. O. G. T.

EBEN DALE LODGE No. 92.

Meets Gleason Hall, Main street, every Saturday evening at 7.30 o'clock.

W. C. T., A. H. Gleason.

W. V. T., L. F. Priest.

P. W. C. T., Charles F. Murdock.

W. Sec., Charles L. Allen.

W. Chap., Nellie Taylor.

W. M., Katie Churchill.

W. F. Sec., Lewis H. Allen.

W. Treas., Sarah Illingsworth.

W. I. G., Benj. W. Gleason.
W. O. G., A. Patterson.
W. R. S., Edith Patterson.
W. L. S., Mabel A. Walcott.

P. of H.

STOW GRANGE, No. 103.

Meets in Town Hall 2nd and 4th Tuesday evenings of each month.

Master, E. F. Wheeler.
Overseer, E. E. Miles.
Lecturer, H. S. Hapgood.
Secretary, Nellie M. Webster.
Chaplain, George Bradley.
Treasurer, Walter S. Lewis.
Steward, Fred Gates.
Asst. Steward, Eugene Stevens.
Lady Steward, Mrs. Margaret White.
Gate Keeper, Charles Hapgood.

Royal Arcanum.

ROCK BOTTOM COUNCIL, No. 222.

Meets in Gleason's Hall 1st and 3rd Wednesday evenings of each month.

Regent, Jona. Walcott.
Vice Regent, H. E. Ray.
Orator, H. W. Swift.
Sec., A. W. Sprague.
Col., L. H. Allen.
Treas., Lewis Parks.
Guide, W. Doyle.
Chap., A. P. Walcott.

STOW RESIDENT DIRECTORY.

Abbreviations Used.

Ag., agricultural; agt., agent; asst., assistant; av, or ave. avenue; b, boards; bldg., building; blk., block; com., commission; c. or cor., corner; clk., clerk; com. trav., commercial traveller; emp., employee; h., house; ins., insurance; J. P., Justice of the Peace; lab., laborer; p., place; P. O. Post Office; prof., professor; prop., proprietor; rd., road; mfy., manufactory. After the name of a street the word "street" is omitted.

Post Office Abbreviations. M., Maynard; R. B., Rock Bottom; S. A., South Acton; W. A., West Acton.

Allen Abigail, h Central

Chas L, asst station agent F R R, h Main, R B

Lewis H, station agent F R R, h Main, R B

Philip, farmer, h Crescent

Ames Fred W, emp box mfy Marlborough, h Main, R B

John C, farmer, h Main, R B

Atherton Sylvia L, b George Rand's, R B

Austin Edgar V, druggist, h Main, R B

Everett E, shoe packer, h Main, R B

Mrs Gilman, h Main, R B

Bacon Wm W, farmer, h Sudbury, Hudson

Baker Joseph E, farm hand, h West Acton near Crescent

Barton Geo H, prof of geology institute of Technology Boston, h Whitman cor So Plain, R B

Jerome, farmer, h off So Plain, R B

Beede Geo S, farmer, h Whitman cor So Main, R B

Bemis Lewis, mechanic and farmer, h Main, R B

Warren, farmer, h Wilkins, R B

Winfield S, burnisher, h High, R B

Bent Thomas H, farmer and wood dealer, h Boxborough

Bezanson David, farm hand, emp and b Francis W Warren's

Bond Frank P, farmer, h East Plain, M

- Bradley Albert G, farmer, h off Central
Geo W, farmer, h off Central
Bray Wm H, farm hand, emp and b Henry Gates'
Brogan James B, overseer spinning B W Gleason & Son's
mill, h Main, R B
Joseph, mill operative, h 11 Main, R B
Brown Edwin, wheelwright, h Central
E Jackson, lab, h Crescent
Mrs Francis, h So Acton
Geo H S, farmer, h Harvard cor Delany
Wm, farmer, h Boxborough
Wm H, farmer, h Central
Wm H Jr, h cor Hudson and So Central
Bruce Mrs Hannah L, h Main, R B
Mrs M M, h Wilkins, R B
Burgess John A, blacksmith, h Main, R B
Burnam Reuben E, emp S Fletcher, h Central
Cahill Jeremiah, h Main, R B
Carlisle Geo, lab, h Central
Carr James R, farm hand, h Rock Bottom
Robert, farmer, h Rock Bottom
Mrs Wm, h Maynard
Carruthers Dr Archibald K, h Main, R B
Cassell Belle, music teacher, b Albert W Puffer's
Chandler Mrs Lizzie M, dress maker, h Maynard
Moses, house painter, h Maynard
Chisholm Wm S, spinner, h Main, R B
Churchill Chas S, farmer, h So Plain, R B
Clark Adams, farm hand, b Mrs Gilman Austin's
Benjamin, farmer, h Central
Silas N, farmer, h So Acton, S A
Mrs W E, h Central
Cogan Timothy, shoe maker, h 11 Main, R B
Conant Mrs Ann, inmate town farm
Charles, emp Folsome & Wheeler's mill, h Rock
Bottom
Conway James, mill operative, b Edward Kane's
Crandall Wm H, farmer, h Crescent
Crimmings Mrs Bridget, h Railroad, R B
Croft James F, wool sorter, h Main, R B
John F, h off Main, R B
Thomas H, spinner, h off Main, R B

- Cross Willard K, farmer, h off Maynard
 Crouch Isaac, farmer, h Harvard
 Curtis Frank, blacksmith, h Crescent
 Dankard Robert, mill operative, h Gleason, R B
 Davidson George H, poultry dealer, h Boxborough near
 Taylor
 Jerome, farmer, h Boxborough
 Davis Wm, dresser, b Geo Rand's, R B
 Dearden Fred, mill operative, h Main, R B
 John, spinner, h Main, R B
 Derby Wm H, emp and b A M Teele's
 Dewmaw Fred, farm hand, h Rock Bottom cor Whitman
 Nelson, emp Wheeler's box shop, h Rock Bottom
 cor Whitman
 DeWolf Israel H, high school teacher, h Crescent
 Doyle James R, boss finisher, h 12 Main, R B
 Wm H, dresser, b J R Doyle's
 Dwinells Jerome, farmer, h Taylor
 Early Michael J, farmer, h Sudbury, Maynard
 Edson Geo W W, designer and pattern maker, h Walcot,
 R B
 John M, farmer, h Walcot, R B
 Evans Alonzo B, h Central
 Fairbanks Sanford B, shoemaker, h Main, R B
 Faxon Harriet F, teacher, h Central
 James O, h Central
 Feather P, supt B W Gleason & Sons woolen mill, h Main
 R B
 Fitch Ernest H, farmer, h Central
 Fitzgerald Daniel, farmer, h Mill
 Flanders Mrs S L, h Main, R B
 Fletcher Isaac W, express driver, h Box Mill
 FLETCHER J S, dry goods groceries etc, prop Stow &
 So Acton express, h Central
 Folkins Fred, farm hand, emp and b A G R Hale's, R B
 FOLSOM BENJAMIN F, farmer, h Whitman, R B
 Forbush Abraham W, farmer, h Rock Bottom cor Box
 Mill
 Lewis W, farmer, h Central
 Foster Chas R, farm hand, emp and b C N Murdock's
 Wallace W, farmer, h Crescent
 Fowler Fred O, emp and b A P Walcott's, R B

- Gately Bernard, farmer, h East Plain, M
Patrick A, farmer, h East Plain, M
Gates Edward F, farmer, h Marlborough
Ezekiel, carpenter, h Summer near So Acton
Fred K, farmer, h Central
Mrs Hannah M, h Marlborough
Henry, farmer, h Central
Geers Otto M, farmer, h West Acton, W A
GLEASON ALBERT H, woolen mfr B W Gleason &
Sons, h Main, R B
GLEASON ALFRED D, woolen mfr B W Gleason &
Sons h Main, R B
GLEASON CHARLES W, woolen mfr B W Gleason &
Sons, h Rock Bottom, R B
GLEASON S AUGUSTUS, woolen mfr B W Gleason &
Sons, h Main, R B
Goddard John A, farmer, h Rock Bottom
Goding Albert M, miller, h Central
Benj J, h off Harvard
David N, farmer, h off Harvard
Golding Harry J, teamster, h East Plain, M
Goldsmith Mrs E, h Marlborough
Goodnow S C, h Marlborough
Green Eugene, hair dresser, h Marlborough
Greeno Geo E, emp and b Joseph Priest's
Hale Abraham G R, attorney, h Broad, R B
Calvin, h Hudson
Joseph C, farmer, h Rock Bottom cor Whitman, R B
Silas, h Crescent
HALE WM F, cranberry dealer, h Delany near Harvard
Hanslip Arthur G, wool sorter, h Main, R B
Hapgood Henry S, farmer and auctioneer, h Central
Hayes Thomas, carpenter, h Main, R B
Haynes Mrs Nancy, h Central cor So Acton
Tilley, farmer, h Maynard
Hayward Arnold, farmer, h So Central
Mary L, h Central
Hemenway Franklin, farmer, h Walcot
F Rockwood, teamster, h Crescent
Hern Wm W, carpenter, h So Acton, S A
Herrick Mrs Benj M, h Central
Hildreth Reuben, printer S J Parkhill & Co, h Central

- Houghton Mrs Susan M, h Rock Bottom, R B
 Howe Mrs Phope, h Wilkins, R B
 Hughes John, carder, h Main, R B
 Hunter Hugh, dyer, h Main, R B
 Hugh Jr, mill operative, h Gleason, R B
 Illingsworth Wm B, spinner, h Main, R B
 Jackman Chas H, supt town farm, h Maynard
 Joyce Wm, farm hand, h Rock Bottom
 Kane Edward, mill operative, h Main, R B
 King David H, farmer, h Main, R B
 Keyes Chas, farmer, h So Central
 Eliphalet, farmer, h So Central
 Marshall E, farmer, h So Central
 Knox Marshall, farmer, h So Plain, R B
 Lawrence Mrs Emily, h Rock Bottom
 Samuel A, carpenter, h Rock Bottom
 Laybolt David, farm hand, h Main, R B
 Lewis Uriel M, farmer, h West Acton
 Walter S, farmer, h So Central
 Libby James, inmate town farm
 Lincoln A Eugene, shoe machinery, h Rock Bottom, R B
 Lippman Herman, wool sorter, h Railroad, R B
 Livermore Dr Abel C, physician and surgeon, h Maynard
 cor Central
 Lynch Michael, wool sorter, h Gleason, R B
 Lyons L R, emp and b A M Teele's
 Mann Samuel, finisher, b G Rand's, R B
 Marshall Herbert J, shoe maker and carpenter, h Central
 Maynard Geo 2nd, hand card room, b Geo Rand's, R B
 Mrs Mary A S, h High, R B
 McCarthy Daniel, shoe maker, h Railroad, R B
 Jeremiah, farmer, h Main, R B
 McGrath Michael, mill operative, h Main, R B
 McGuire Michael, farmer, h Marlborough
 McLeod Alexander, farm hand, emp and b H P Underwood,
 R B
 McPick Barney, lab, b W W Bacon's, Hudson
 Mentzer Wm A, farmer, h So Plain, R B
 Midwood Allen, mill operative, h Main, R B
 Miles Eugene E, farmer, h Elm, Birch Hill farm
 Ezra M, farmer, h Rock Bottom cor Mill
 Henry B, farmer, h Elm, Birch Hill farm

- Monroe John S, emp Wheeler & Fulsom's mill, h Rock Bottom
- Moore Albert G, farmer, h Harvard
Mrs Lydia, h Main, R B
- Moynihan Daniel, lab, h Railroad, R B
Michael D, farmer, h Railroad, R B
- Mulcahey Daniel, stone mason, h Main, R B
T D, farmer, h Walcott, R B
- Murdock Chas H, h Whitman, R B
Chas N, farmer, h Whitman, R B
Geo T, h Whitman, R B
- Murphy John, emp and b Lewis Parks, R B
John, farm hand, b John S Monroe's
- Nelson Niles H, farm hand, emp and b T P Bond's
Oscar, night watchman, h 12 Main, R B
- Nevins Amajiah, farmer, h Central
- Newhall N Abbot, farmer, h Box Mill
- Nye Henry C, farmer, h Central
- O'Brien John, farmer, h Boxborough, W A
Thomas, clerk T F O'Brien, b T F O'Brien
- O'BRIEN THOMAS F, dry goods, groceries etc, h Main
R B
Wm, farmer, h Boxborough, W A
- Packard Alden, farmer, h Packard
Calvin, farmer, h Central
- Page Maynard, stone mason and farmer, h Central
- Parker James F, farmer, h off Main, R B
- PARKER JAMES L, cider mfr and florist, h So Plain,
R B
Wm H, farmer, h off Main, R B
- Parks Lewis, farmer, h Walcot, R B
Samuel, farmer, h Rock Bottom, R B
- Patterson George A, emp Augustus Gleason's, h Main, R B
Melbourn B, shoe maker, h Wilkins, R B
Mrs Rachel, h Main, R B
- Peck John G, farmer, h cor Central and Harvard
Mrs S A, h cor Central and Harvard
- Perry Mrs Dolly, h High, R B
- Peters Geo L, farmer, h off Harvard
- Peterson Thomas, farm hand, emp and b J T and W H
Parker's
- Philips Aaron J, farmer, h Marlborough, R B

-
- Porter Harriet M, h West Acton, W A
 James B, farmer, h West Acton, W A
 Lydia W, h West Acton, W A
 Pottcer Leonard L, farmer, h So Plain cor Whitman, R B
 Priest Abraham, farmer, h Whitman, R B
 Joseph, farmer, h West Acton
 Lyman F, farmer, h Whitman, R B
 Puffer Albert W, farmer, h Central cor So Acton
 Rand Geo W, machinist, h 14 Main, R B
 Sarah, h Central
 Randall Dr J W, h Walcott, R B
 Ray Abram E, farm hand, h High, R B
 Chas E W, farmer, h Harvard
 Daniel, farmer, h Harvard
 Ephraim, farmer, h Harvard
 Reardon Dennis, farmer, h Wilkins, R B
 Riche John, farm hand, emp and b Abraham Priest's
 Ridley Benjamin H, farm hand, emp and b B F Folsom's
 Riardan Daniel, emp and b T D Mulcahay's, R B
 Robbins Geo, farmer, h Harvard
 John, farmer, h Hudson
 Roberts James H, wool sorter, h Railroad, R B
 Robinson Mrs Susan, h Central
 Rockwell Guy L, emp and b A P Walcott's, R B
 Rodgers Rev S Louis, pastor M E church, h Main, R B
 Rogers Mrs Joseph, h cor Central and Harvard
 Roxanna, h cor Central and Harvard
 Rollinston James, spinner, h off Main, R B
 Royce Mrs Rebecca, h Main, R B
 Wm, farmer, off Harvard
 Rudolph John, emp and b Geo Thorndike's
 Salisbury Bowman G, h Central
 Jonas G, h Central
 Samson Isaac A, farmer, h Central
 Sargent Chas W, farmer, h West Acton
 Wm, farmer, h West Acton
 Scott John, lab, h Central
 Thomas, house painter, h Central
 Shaughnessy Edmond, farmer, h Rock Bottom
 Edward T, blacksmith, h Rock Bottom
 John J, law student, h Rock Bottom
 Shaughnesy Martin, farmer, h Harvard

- SHAUGHNESY P HENRY, blacksmith, h Central
 Shearmur John, wool scourer, h Rock Bottom, R B
 Sherman Benj F, farmer, h Marlborough
 Shortsleeve Joseph H, wool dyer, h Main, R B
 Silloway Arthur L, poultry and eggs, h cor Central and East
 Smith Andrew J, carpenter and farmer, h Rock Bottom
 Mrs Harriet B, h Central
 Henry, carpenter, h Central
 Orlando, painter and paper hanger, h Rock Bottom
 S Frank, emp Shaw's shoe mfy, h Marlborough, R B
 Spollon John T, mill operative, h off Main, R B
 Sprague Arthur W, farmer, h Gleason, R B
 Stearns Geo, h High, R B
 Mrs Sarah, h Boxborough
 Stevens Eugene C, farmer, h Boxborough, W A
 Francis H, farmer, h Boxborough, W A
 Stow Edmund, farmer, h Central
 Geo W, farmer, h Harvard
 Stronach Archie, section man F R R, h Main, R B
 Strout Wm O, farmer, h off Maynard
 Soper Caroline A, h Central
 Sullivan Patrick, lab, h Taylor
 Swift Geo, weaver, h Main
 Geo S, h Main, R B
 Wm H, carpenter, h High, R B
 Taylor Chas, farmer, h Rock Bottom
 Chas C, poultry business, h Central
 Elizabeth B, h Central
 TAYLOR GEO O, milk dealer O Taylor & Son, h Taylor
 Mrs Mary, h Main, R B
 TAYLOR OLIVER, milk dealer O Taylor & Sons, h Taylor
 Teele Appleton M, farmer, h Hudson
 Tenney Eliphalet J, farmer, h Taylor
 Thompson Frank H, expressman Boston, h So Acton
 Thorn Albert, house painter, h Main
 Parker, wool sorter, h Main, R B
 Thorndike George, farmer and milkman, h Summer cor So Acton
 Touhey Daniel, farmer, h East Plain, M

-
- Turnbull John, carpenter, h 11 Main, R B
 Thomas, spinner, h 11 Main, R B
 Tuttle Evin, farmer, h Cross, S A
 Mrs Francis, h Cross, S A
 Lowell, farmer, h Cross, S A
 Underwood Herbert P, farmer, h Whitman cor So Plain
 Horace H, farmer, h off So Plain, R B
 Vadakin Mrs Lizzie J, at Mrs W Carr's, h Maynard
 Walcott Abijah P, farmer, h Walcott, R B
 Artimus, farmer, h Walcott, R B
 Josiah, farmer, h Central cor So Acton
 Wall Mrs Margaret, h Main, R B
 Ware Obed, farmer, h Hudson
 Warner Mrs Mary, h Wilkins, R B
 Warren Albert, h Crescent
 Francis W, insurance agent and farmer, h Crescent
 Weeks Mrs Dolly, h Main, R B
 Wetherbee Amon H, farmer, h Boxborough
 Andrew, farmer, h Boxborough
 Chas D, farmer, h Boxborough
 Zabine A, emp Wheeler's box mfy, h Central
 Wheeler Cyrus, h Mill
 WHEELER EDWARD F, grain, lumber etc, Folsom &
 Wheeler, h Mill
 Whitcomb Irving B, clerk J S Fletcher's, h Central
 Joseph E, farmer, h Rock Bottom
 J Marshall, shoe maker, h Elm, R B
 Mrs Mark, h Rock Bottom
 Wm C, farmer, h Rock Bottom
 White Stephen, veterinery surgeon, prop Stowhotel, h Cres-
 cent
 Whiting Chas A, farmer, h off Central
 Whitener Titus, emp and b W M Lewis
 Whitmarsh Geo, farmer, h Central
 Whitney Arthur S, farmer, h Taylor
 Mrs Isaac, h off Orchard
 Wm H, farmer, h off Orchard
 Wilder Albert H, farmer, h West Acton
 Sarah C, h West Acton
 Wilkins Rufus, stone mason, h Central
 Willard Luke T, farmer, h off Harvard
 Willis Herbert, emp and b A G Moore's

Willis Herbert O, farmer, h Taylor
Wood Geo W, gardener, h Central
Willie A, book-keeper, h Central
Wright Colwell, lather, h Crescent

TOWN OFFICERS.

Selectmen—W. L. Lewis, F. H. Stevens, A. W. Puffer.

Town Clerk—Henry Gates.

Assessors—L. Parker, Lyman E. Priest, A. G. Moore.

Treasurer—F. H. Stevens.

Overseers—H. S. Hapgood, James L. Parker, Benjamin Clarke.

Road Commissioners—John Robbins, A. P. Walcot, Henry S. Hapgood.

Constables—A. B. Evans, James F. Croft.

School Committee—Edward Wheeler, chairman, J. F. Croft, secretary, A. J. Smith, Chas. E. W. Ray, Herbert Marshall, Henry S. Hapgood.

Field Driver—Zabine A. Wetherbee.

Farmers' Club—A. J. Smith, president.

STOW BUSINESS DIRECTORY.

Auctioneer.

Hapgood H S, Central.

Blacksmiths.

Burgess J A, Main, R B.

Curtis Frank, Central.

SHAUGHNESSY P H, Central. See page 53.

Box Manufacturers.

Folsom & Wheeler, Box Mill.

Butcher.

Brown Wm H Jr, cor Hudson and So Central.

Carpenter and Builder.

Marshall H J, Central.

Cider Manufacturer.

PARKER J L, So Plain, R B. See page 54.

Cranberry Grower and Dealer.

HALE WM F, Delaney near Harvard. See page 54.

Dressmaker.

Chandler Mrs Lizzie M, Maynard.

Dry and Fancy Goods.

FLETCHER J S, Central. See page 62.

O'BRIEN T F, Main, R B. See page 54.

Express.

Stow and So Acton, J S Fletcher prop, Central.

Florist.

PARKER J L, So Plain. See page 54.

Grain, etc.

FOLSOM & WHEELER, Mill. See page 61.

Grocers.

FLETCHER J S, Central. See page 62.

FOLSOM & WHEELER, Mill. See page 61.

O'BRIEN T F, Main. See page 54.

Hairdressers.

Green Eugene, Stow hotel and Rock Bottom.

Hotels.

Stow Hotel, S White prop, Crescent.

Insurance.

Warren F W, Crescent.

Lawyers.

Hale A G R, Broad, R B.

Lumber, etc.

FOLSOM & WHEELER, Mill. See page 61.

Milk Dealers.

TAYLOR OLIVER & SON, Taylor. See page 61.

Thorndike Geo, cor Summer and So Acton.

Music Teacher.

Cassell Belle, b A W Puffer's.

Painter and Paper Hanger.

Smith Orlando, Rock Bottom.

Physician and Surgeon.

LIVERMORE DR A C, cor Central and Maynard. See page 62.

Poultry.

Davidson Geo H, Boxborough near Taylor.
Silloway A L, cor Central and East.
Taylor C C, Central.

Shoe Maker.

Marshall H J, Central.

Stone Mason.

Page Maynard, Central.
Wilkins Rufus, Central.

Veterinary Surgeon.

White Stephen, Crescent.

Wheelwright.

Brown Edwin, Central.

Wood, etc.

Bent T H, Boxborough.
FOLSOM & WHEELER, Mill. See page 61.

Woolen Goods Mfr.

GLEASON B W & SONS, Gleason near Main. See page 62.

INDEX TO ADVERTISERS.

Assabet Mfg. Co., woolen goods, Maynard,	2
Burkill, J., Merchant Tailor, Hudson,	22
Currie, N. & Co., clothing, Maynard,	6
Fletcher, J. S., groceries and dry goods, Stow,	62
Flood, Geo., livery stable, Maynard,	17
Folsom & Wheeler, groceries, etc., Stow,	61
Fowler, O. S., undertaker, Maynard,	13
Gleason, B. W. & Sons, woolen mfrs., Stow,	62
Gove, H. B., baker, Maynard,	8
Hale, Wm. F., cranberry grower, Rock Bottom,	54
Haynes, A. H., clothing, etc., Maynard,	1
Haynes & Tourtellet, grain, wood, etc., Maynard,	3
Health Food Co., health foods,	8
Hillis, Thomas, lawyer, Maynard,	10
Holt, A. D., stoves, etc., Maynard,	14
Jubb, J. W., furniture, etc., Maynard,	18
King, Samuel 2nd, livery stable, Maynard,	13
Livermore, A. C., physician and surgeon, Stow,	62
McGrail, H. H., hotel Maynard,	10
Moore, J. O., baker, Maynard,	14
Morey John, hair goods, Providence, R. I.,	8
O'Brien, T. F., groceries, dry goods, etc., Rock Bottom,	54
Packard, C. H., jeweller, Maynard,	back cover
Paine, R. J., puritene, Mansfield,	12
Parker, J. L., cider mfr. and florist, Rock Bottom,	54
Persons, C. H., pianos and organs, Maynard,	back cover
Rich & Vineca, dry goods, etc., Maynard,	1
Riverside Co-operative Asso., groceries, etc., Maynard,	3
Shaughnessey, P. H., blacksmith, Stow,	53
Sullivan, P. J., tailor, Maynard,	10
Tailor, Oliver & Son, milk, Stow,	61
Tucker, J. Y., blacksmith, Maynard,	18
Waters, Geo. F., Electro Magnetic Flesh Brush,	4
Webster, J. T., dry goods, Maynard,	1

GEO. W. SOUTHWORTH,
 BOOK
 AND
 JOB
 P
 . R
 . I
 . N
 . T
 . E
 . R

Why not send for our estimate?

"Chronicle" Building, - - Needham, Mass.

A. E. FOSS & CO.

PUBLISHERS OF

DIRECTORIES
RESIDENT
—AND—
BUSINESS

Any Directory published in
New England furnished
at short notice.

Home Office, Needham, Mass.