

digital

MAYNARD

DIGITAL THIS WEEK



Volume 9 Number 16

September 7 1982

Digital takes an interest in employees' problems

We spend so many hours of our lives at work. Why shouldn't our work environment, where we develop our careers, plan the future and make friends, be the place to seek help in our personal life?

"Digital recognizes that personal, emotional, alcohol, legal, financial or marital difficulties can be as disabling as a physical illness if it isn't identified early and resolved," says Ken Olsen, Digital's president.

"We brought the EAP to Digital to help our employees overcome problems that could jeopardize their health and employment. We want to see our people maintain their full work potential."

The Employee Assistance Program (EAP) is a confidential evaluation and referral service for employees and their families that may have personal problems. The staff works to help employees assess what the exact source of the problem is and determine whether or not to seek an outside professional. They follow up on the referral to be sure that employees and their families are receiving helpful and healing support.

Already established in other sites at Digital, EAP is being introduced over the next few months in facilities in the Greater Maynard area. By the end of the fiscal year, there will be 20 working programs serving 30,000 domestic employees.

The staff of the EAP program in the Greater Maynard area answer some common questions about the program:

Are there any fees involved?

The services provided directly by the EAP staff are free to all employees and their immediate families. Fees for additional outside assistance vary but generally are covered in accordance with one of Digital's health benefit plans.

Do you send everyone to outside professional help?

No, the program is designed to be flexible to the needs of the individual. More often people are not sure if they have a real problem. Sometimes just talking helps to clarify the situation that troubles an employee.

Who chooses the outside referral?

Since EAP is not intended to "treat" problems, the staff keeps a network of community services specializing in all aspects of social issues. They will recommend a resource best suited to deal with a specific problem to contact.

Does EAP only deal with serious problems like drug abuse, alcoholism and mental illness?

No, the majority of employees using EAP are dealing with everyday problems looking for direction, clarification and the skills to manage their own lives.

How does the program work with family issues?

All it takes is a call from the employee. In some cases, a meeting with a family member(s) can be arranged as part of evaluation process.

What is the role of EAP in work-related problems?

It is recognized that work or performance problems may be linked to personal issues. EAP is just one resource available to employees in assessing what is contributing to the job problem. Personnel will still mediate in work-related issues.

What facilities are covered by the new EAP for Greater Maynard?

Hudson and LM2, Acton-Nagog, the Acton

Refer a customer; win a DECmate



The Small Business Systems (SBS) group officially began the DECmate referral program for New England employees on August 16. (Right to left) Mary Papison, SBS, Andy Knowles, vice president, SBS, and Bary Cioffi, DECmate product group manager, meet with June Lively, Mill receptionist at the display in the Thompson Street Lobby. The display carries two pieces of literature; a primer explaining the referral program and a product brochure.

Continued on page 3

NED offers ALL-IN-1 enhancement

The New England District of the U.S. Area Field organization (NED) needed an employee relations program for a geographical territory spanning 60,000 square miles. A combination of Digital products and the innovative efforts of several NED people created an automated employee communication system.

Tenny Mickey, district Personnel manager, stressed that the program was to enhance communications among their remote sites not to replace human interaction in Personnel matters.

Paul Mac Fawn, Personnel manager for the North Country branch of NED, had suggested Digital's office automation products as the solution. His idea was to develop a system that would provide informational items, job postings, a suggestion box and classified ads in bulletin board format that could be accessed via a terminal at any site.

With programming help from Russ Carr, NED software consultant, and Joanne Pepicelli, NED order administration coordinator, they developed the NEDNET, specifically through an enhancement to the Charlotte Package, recently released as the corporate product ALL-IN-1. (See related story on this page).

NED is New England district of the Northeast region. Their Charlotte account carries 250 users; some are group accounts.

The applications developed by NED's Personnel, with display, search and print functions, cover job openings-updated as soon as requisition is signed, job changes, and classified ads that can be entered and deleted from your terminal. Classifieds and job changes are programmed to be deleted after a two week run. A loop function will turn a terminal placed in high traffic areas into a showcase for the employee communication program.

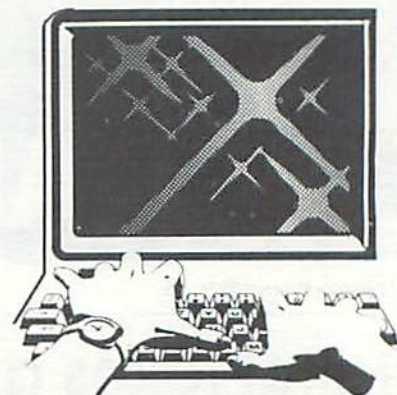
DID YOU KNOW? and WHAT'S ON YOUR MIND are two special employee relations features that respectively share company and Personnel news and answer employees' questions logged into the sys-

tem. All messages are screened through the Personnel office and answered by appropriate senior managers.

With input from all New England offices, the Personnel Menu is the control side of program. Cindy Freeman, Personnel administrative secretary, located at the Burlington, Mass., headquarters can add, delete, edit functions, authorize ads, generate and print out reports and direct questions from the "suggestion" box to district managers.

File maintenance keeps employment contacts, job codes, sites and listings accurate, especially for the search function.

"The Automated Employee Communications Network, NEDNET, is a manifestation of the interest in office automation and



cross-functional teamwork that is sweeping the New England District," reported Tenny Mickey. "Once the system is debugged the New England District will make it available to other parts of the company."

...OFFICE PLUS Family Grows...

Digital advances office automation offerings

On July 7, Digital enhanced its office automation offerings by announcing the introduction of its ALL-IN-1[®] system a new member of its OFFICE PLUS product set, featuring an enhanced version of its sophisticated electronic mail and filing system, DECmail.

Called ALL-IN-1, the new product features single terminal access to a comprehensive set of office-related functions via an easy-to-use menu. As a major feature of ALL-IN-1, the menu gives users an integrated set of programs, and provides immediate access to all of the system's capabilities. In addition to the standard text and data processing features, the menu contains such other features as DECmail, desk calculator, on-line phone directory, calendar management, action item listing, and an electronic file cabinet.

According to Julius Marcus, Vice President Commercial Products Group, "To the extent that ALL-IN-1 offers such a wide degree of office functionality in one, easy-to-use system, it is unmatched, we believe, in the industry. Not only is it deliverable now, but it is already in use by several of our customers."

"When we announced the OFFICE PLUS program, we characterized Digital's intentions in the office automation marketplace as an evolutionary approach. The goal, as stated then, was to create a comprehensive architecture in which all the pieces work together to permit easy, integrated, single terminal access by virtually anyone in an organization. ALL-IN-1 provides precisely that capability," Julius said.

TWO VERSIONS

ALL-IN-1 is being offered in two configurations, Basic and Extended.

The Basic package gives first time office automation users a comprehensive system that allows for future growth. ALL-IN-1 can be configured on all of Digital's VAX family

of products, including the recently announced VAX-11/730. Designed as a user-friendly system, ALL-IN-1 Basic provides a standard set of features whose menu capabilities are not meant to be modified. ALL-IN-1 Extended, for more advanced needs, offers all the advantages of the Basic package, as well as additional data management and application development capabilities.

ALL-IN-1 Extended allows users to customize the system to conform to their office automation requirements. ALL-IN-1 Extended includes VAX DATATRIEVE, Common Data Dictionary, spelling dictionary, and programming capability in such higher level languages as BASIC and COBOL.

ALL-IN-1 Extended is available on the VAX-11/750 and VAX-11/780. Current VAX customers may purchase a software only version.

"ALL-IN-1 has been designed to reflect Digital's direction in the office market. Customers will be able to add or upgrade to new capabilities as they become available without duplicating or discarding their current equipment investments," Julius added.

Sensitivity to individual customer needs is provided via the variety of terminals available with ALL-IN-1. The system can be accessed by Digital's popular VT100 series of terminals, or any member of the new personal computer family. Typically, customers with heavy word processing needs will purchase DECmate II. The Professional 300 family will be the choice for those desiring to write their own migratable programs on the host VAX.

The Rainbow 100 will be useful for those primarily concerned with CP/M* requirements.

* CP/M is a registered trademark of Digital Research, Inc.

DIGITAL THIS WEEK



Editor: Christine Medeiros

Send stories, photos, ideas or suggestions to DTW, PK3-1/K23 or call the editor at DTN 8-223-5042. Ads must be submitted in writing to Marketplace, PK3-1/K23. Please direct all Marketplace inquiries to Jennifer Hawes at DTN 8-223-2261.

Digital This Week is published every other week by the Corporate Employee Communication department of Digital Equipment Corporation for the Employees in the Greater Maynard area.

Digital takes an interest in employees' problems

Continued from page 1.

plant, Concord, Powdermill Road, Virginia Road, Parker Street, the Mill, Sudbury, Stow, Hanscom Field and Kane Drive.

Where are EAP offices located in this area?

There are EAP offices located in the Mill, Parker Street, Stow and Hudson. There are sites planned for Acton-Nagog and West Concord. Employees may choose any of these sites to meet with a staff member. Under some circumstances off-site meetings can be arranged.

What else does EAP have to offer?

EAP will sponsor lunchtime seminars on life style, social and personal issues throughout the year. The open meetings are to provide information and added skills in managing life problems and situations. September schedule is listed on this page.

The assessment of personal problems is not the only function of the program. Many employees use the staff's expertise for seeking a second opinion or just information on a specific issue.

How quickly can I get an appointment?

Generally, the staff tries to return calls the same day. An appointment can be scheduled within 48 hours or sooner, depending on the nature of the problem. Any employee can reach the EAP staff directly by phone. Regular staff hours in Greater Maynard are between 9 to 5, Monday through Friday.



Rick Bickford, MSW. Another full-time EAP staff member, Rick specializes in a wide range of personal problems.



Vera Wright, MSW. As a full-time staff member, Vera specializes in multi-cultural, family and domestic issues.

Do I need to be referred by my Personnel rep or manager?

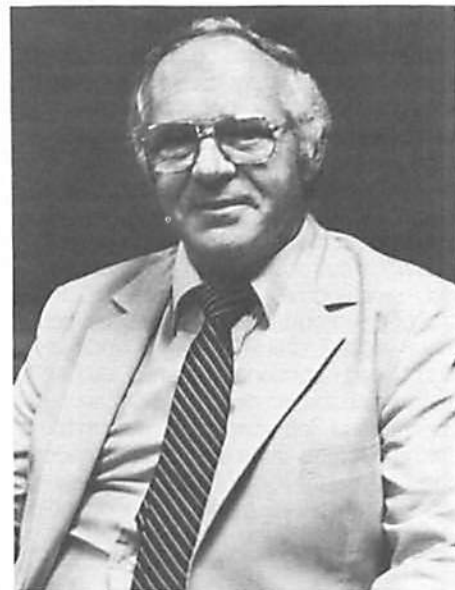
NO, EAP is a voluntary service. Due to the strictly confidential nature of the program, employees are encouraged to contact EAP directly. It is strictly up to employees whether or not they discuss their intentions with their manager or with Personnel.

How can managers use EAP.

Many managers and supervisors have already been briefed on the Employee Assistance Program. In a one-to-one dialogue, a manager may suggest EAP as a resource for assessing what is contributing to a specific work problem.



Bruce Davidson, MSW., manager of Employee Assistance Program, consults with Sandy Hebb, department secretary.



John Hamrock, MED. John is a consultant and recovering alcoholic specializing in alcohol and chemical dependency.

How do other EAP's work?

Most programs are similar and part of the Health Services organization at Digital.

Have more questions?

Call your local EAP office or Health Services department. Numbers are listed below.

Bedford Ed Services	617-367-6960
Marlboro/Franklin	DTN 231-5438
Boston	DTN 282-5622
Nashua/Merrimack	617-273-2150
Woburn/Wilmington/ Burlington	617-367-6960
Natick	617-655-9760
Northboro	DTN 234-2313
Tewksbury	DTN 247-2666
Greater Maynard	DTN 223-4439

September Lunch Time Seminar

"What is EAP; How Can it Work for You?"

Many different kinds of personal problems or family situations can affect one's work life, career development and home life. EAP staff will discuss how the EAP works and be available to answer questions.

Marlboro (LM2) - September 8 - Cafeteria
Parker St. - September 28 - Corporate Auditorium
Hudson - September 9 - Mount Washington Conference Room
Acton - September 14 - Process Engineering Room
Stow - September 20 - Baldwin Room
Mill - September 21 - Cafeteria Conference Room

Seminars are open to all employees; just bring your lunch.

Future Seminars:
October - "Women, Work and Family"
November - "Personnel Management and Adaptation to Stress"

Internal Test Symposium set for October

The second annual Internal Test Symposium (INTESM II) will be held on Oct. 19, 20 and 21 at the Sheraton Rolling Green in Andover, Mass. Dick Albright, steering committee chairman, announces that plans are rapidly taking shape.

The first day will consist of tutorials on specialized test topics in the AM; the intent being to reach out to the newcomers and review the basics and philosophy of test and Automatic Test Equipment (ATE). Instructional information will be disseminated on In-Circuit Testers (ICT) and Dynamic High Speed Functional Testers (DHSFT), Testability rules; Artificial Intelligence, Networking, and Software Tools. Then in the afternoon of the same day, invited vendors of test hardware and software will present non-commercial research papers on their efforts to advance the state of the art.

English as a Second Language: increasing conversation skills

As a multinational, multicultural company, many of Digital's employees have native languages other than English. In an effort to help these employees increase their language fluency, Employee Development Programs has introduced a new course on the July-December calendar of offerings.

English as a Second Language: Increasing Conversation Skills is designed to enhance basic language skills through weekly practice in **conversation**. During the two hour session each week (10

The next two days will be devoted to INTESM's theme of "Advancements in Test for Products of the 80's." Two technical sessions will be run in parallel in the morning and afternoon of both days.

The committee has received an overwhelming response to its call for papers, out of which approximately 30 have been chosen, and authors notified.

Jeannie Flynn, INTESM II program coordinator, is preparing to mail out a registration packet which includes the program schedule, abstracts, list of speakers, a map, and registration instructions. Those interested in attending are invited to contact her on DTN 280-7232 or through a written request to Q1-I/B20. Actual registration, however, must be done on the written form provided in the packet.

weeks), participants will use oral dialogues, simulation games, discussion and formal pronunciation exercises to increase proficiency. Class size allows for small group as well as individual attention. Participants completing this course can expect to communicate more effectively in English with the added bonus of feeling more confident on the job with this newly acquired skill.

For further course description or information, call Kathy Elkins at DTN 223-1849.

Bedford training center offers night school

Educational Services has announced another first for Digital-users—Evening Education. On Sept. 7, the Customer training center begins its Fall curriculum of 15 of Ed Services' most popular customer offerings.

Available through Evening Education will be Introduction to Minicomputers, five VAX/VMS and two VAX-11 Datatrieve courses, an RSX-11M/M-Plus User and two Word Processing courses. Seminars in Business Personal Computing, Office Automation, Pascal and Datatrieve-11 will be offered at night.

Systems M.E. Training has openings in Fall

Listed below is the Fall schedule for the Systems M.E. Training Courses held in Acton, Mass.

SEPTEMBER

New Age Thinking - Sept. 14-17
K.T. Problem Solving/Decision Making - Sept. 20-24

OCTOBER

New Age Thinking - Oct. 19-22
K.T. Analytic Trouble Shooting - Oct. 25-29

NOVEMBER

Facilitator Training for Intro. to Mfg. Engi-

In addition, ten self-paced courses will be available at the facility's Individualized Learning Center (ILC).

Evening sessions will be held from 6:30 to 9:30 p.m., Mondays through Thursdays. The ILC will be open from 6:30 to 9:00 p.m. The cafeteria will be open from 5:00 to 6:30 p.m.

Enrollment will be open to employees on a space available basis. For more Evening Education information, call DTN 249-4830 about courses and ILC; call 249-4949 about seminars.

neering (M.E. Bootcamp) - Nov. 4-5
K.T. Problem Solving/Decision Making - Nov. 8-12
New Age Thinking - Nov. 16-19
DECEMBER
Project Management - Dec. 1-3
Zehntel TS400 Software - Dec. 6-10
K.T. Problem Solving/Decision Making - Dec. 13-17

Applications can be obtained from your training coordinator or by calling DTN 232-2486.

External Research aw

The Computer and Information Science Department (COINS) at the University of Massachusetts/Amherst has received the single largest equipment grant in the University's history. The total dollar value of the award made by Digital is approximately \$1,000,000, said Acting Chancellor Loren Baritz.

The COINS research group will receive a network of ten VAX-11/750 computers, as well as funds for auxiliary equipment, software and graduate student assistance. The researchers will focus their effort in an area referred to as "artificial intelligence." Artificial intelligence has been described as a process by which mechanical devices are able to perform tasks which, when they are performed by humans, require some thought. Interest in this area is building worldwide. The two-year research program is sponsored by Digital's External Research group headquartered in Hudson, Mass.

"The National Science Foundation and the Defense Advanced Research Projects Agency will be jointly contributing \$350,000 to help fund this

Internal DECUS annou

General Georges F. Doriot, member of Digital's Board of Directors, will be the keynote speaker of the Internal DECUS Fall Symposium this year. To be held on Nov. 3, 4, and 5 at the Sheraton Conference Center in Boxborough, more than 50 individual sessions will be conducted as workshops, panel discussions, or tutorials, design for managerial and technical audiences.

Guest speakers will be Professor John F. Rockhart, director of the Center for Information Systems Management at MIT's Sloan School, and Dr. Harold C. Kinne of the University of Texas, Dallas School of Management and Administration. A large exhibit area will be open all three days.

Sessions have been planned on topics such as personal computing, workstations, networking, and data management. New product announcements and updates on current products are also planned. To help attendees select the

Announcing the Student C

The Student Chip Design Project Course is scheduled to begin in October, 1982 in the Hudson Semiconductor facility. The Chip Design Project Course is the laboratory component of the engineering training courses offered by LSI. The objective of this course is to provide hands-on exposure to the integrated circuitry design process from conception through fabrication of tested prototype chips.

The Project Course emphasizes the use of Digital's Computer-Aided-Design tools for all phases of design and verification processes. A feature of the course is the tight project schedule that forces dependency on CAD. Engineers

ds UMass \$1 million

fort," said Baritz.

The principal investigators for this grant are computer scientists Victor Lesser and W. Bruce Croft. Both are working on what is called "intelligent office systems."

Lesser and Croft will draw on the expertise of the entire artificial intelligence research group in the COINS department, now numbering nine members and one of the largest such assemblies of tenure-track computer scientists in the country. (Fortune Magazine estimates only 200 Ph.D. level scientists are working on artificial intelligence research in the U.S.)

The two-year research project involves the development of an intelligent office information system that will help office workers perform any high-level office routines, including a new electronic file cabinet system with particularly sophisticated information retrieval procedures as well as a "procedure editor" that will allow the system to be tailored by the user to his specific style of working.

ces Fall symposium

essions of most interest to them, many sessions have been grouped in major topic tracks.

The exhibit area will offer more than 15 booths displaying personal computers, electronic publishing, graphics, software demonstrations, and terminal products. In-House Field Services, Educational Services, and Internal Software Services will also be represented.

Preliminary programs with detailed registration information will be mailed out in late September. For more information contact Internal DECUS at DTN 231-4332.

Preregistration is required for the symposium. THERE WILL BE NO WALK-IN REGISTRATION. To accommodate attendees' schedules and interests, Internal DECUS offers three registration options. Attendees may register for the full day, for the morning only, or for the afternoon only. Half-day registrations do not include lunch.

Design Project Course

ishing to enroll in the Project Course should: Have taken the VLSI Short Course or equivalent.

Have discussed project goals with their managers.

Have begun preparation on the architectural design of the chips they wish to refine, implement and design.

The Project Course is a 10-week course, which is offered twice yearly by LSI. The optimum student enrollment for the course is 10 engineers. For further information, please call Cathy Laboisson, 225-5706, WAFER: LABOISSON, LO 1-1/S07.

Call for advanced development proposals

Are you an engineer with a good idea that requires advanced development experimentation? The RAD (Research and Advanced Development) committee is soliciting quality proposals for innovative projects. The RAD committee supports a di-

verse set of efforts ranging from laser drillings to human factors. Any technology type is fair game for RAD funding. If you are interested, please contact your manager for further information.

Offerings from Ed Services Seminars

To register for the following courses, call the Seminar Registrar at DTN 249-4949. Software Services Employees should register through their Software Services Registrars.

Software Engineering: A Professional Development Seminar

This three-day seminar presents the significant advances in software development methodologies that will result in timely and cost-effective production of high quality software systems. The orientation is primarily technical and is intended for persons with two to five years of software development experience and for those who have some management experience. The seminar covers requirements analysis, specifications, design, implementation, and other issues relating to the software development environment.

September 27-29, Boston, Massachusetts

Data Base Technology: The Key to Software Productivity

This three-day seminar will provide a thorough overview of the basic concepts of data models and the physical organization of data bases. An important part of the seminar will be a comparison and contrast of the three significant data base models: relational, CODASYL, and hierarchical. The participants will gain an in-depth understanding of distributed data base systems and application design. The seminar will also discuss evaluation and selection of DBMS.

October 13-15, Wakefield, Massachusetts

Introduction to Office Automation

This one-day course is for managers and supervisors who need to understand the scope of today's office automation "revolution" and evaluate its potential for improving business productivity.

Course topics include an explanation of fundamental concepts and a look at the most current office techniques. Planning and implementation are examined in depth from the initial survey and needs analysis to vendor and system selection techniques.

The seminar is presented by John Walsh, an internationally recognized author and authority on Office Automation, who speaks from his years of practical experience with some of America's leading-edge corporations.

October 18, Nashua, New Hampshire

Real-Time Computer Applications: A System Design Seminar

In environments where industrial processes require continuous monitoring or where scientific experiments collect large quantities of data, many substantial paybacks are possible using real-time computer systems. This application seminar focuses on critical issues relating to the design of these systems. In lectures based on actual experience, the seminar leader presents the fundamental concepts of real-time system design. Issues addressed include selection of system components, characteristics of data flow, and formulation of design specifications. Attendees should have previous computer experience and should have been involved with at least one major project-not necessarily a real-time system.

October 19-21, Bedford, Massachusetts

Advanced Datatrieve Applications

This seminar is for those who currently use Datatrieve-11 and would like to use the advanced functionalities of this product. Seminar topics include design of domain and record definitions and use of procedures, tables, validations, and views. Other advanced features to enhance use of the interactive query language will be covered: use of the report writer, maintenance of dictionary fields, and maintenance of domains with evolving applications.

Prerequisites: "Introduction to Datatrieve-11" seminar or equivalent.

October 25-27, Bedford, Massachusetts

THE MARKETPLACE



CARS

- '80 MGB, elec over-drive, 20Kmi, exc cond, \$6200, William, 244-2169
- '77 DODGE CHARGER, 77Kmi, rebt at 25K, AC, AM/FM, body nds work, \$1400, B/O, Margaret, 289-6159
- '72 CHEVELLE MALIBU, 8cyl, PS, PB, rear defog, AM/FM, 57Kmi, 4dr, vinyl top, \$1000, B/O, Doreen, 249-4400
- '79 TOYOTA COROLLA LIFTBACK, 5spd, exc mech cond, AM/FM, blue, mint, \$4700, Larry, 223-5955
- '76 MAZDA RX4, 73Kmi, 20K on new eng, auto, AM/FM, PB, exc cond, must see, \$2950, B/O, Dave, 223-7270
- '80 TOYOTA COROLLA LIFTBACK, 2dr, 5spd, AM/FM, 38K mi, copper, \$5250, Dick, 276-7307
- '78 OLDS OMEGA, 6cyl, auto, AM/FM, PS, PB, green, white vinyl rf, exc cond, \$3500, Donald, 251-1862
- '80 VW DASHER, diesel, 4dr, 48Kmi, AC, AM/FM, 40mpg, red, \$5950, Bruce, 278-4441
- '80 FORD COURIER, fiberglas cap, snow tire, stereo, Ford Service Plan, more, \$6000, Dave, 223-4794
- '75 VW SCIROCCO, new tires, brks, carburetor, silver, exc cond, \$2100, Bruce, 231-5918
- '82 MAZDA RX7, 5spd, 26mpg, sunrf, rear defog, AM/FM, 4spkrs, exc cond, \$11K, B/O, Ken, 231-7456
- '74 CAPRI, 2000cc, std, \$600, Gil, 223-6734
- '75 FORD LTD STATION WAGON, gd running cond, nds front brakes, \$700, B/O, Julia, 223-5853
- '79 CHEVETTE, 4dr, AM/FM, 62Kmi, 27mpg, runs exc, \$3250, Steve, 223-9820
- '81 DATSUN 210 HATCHBACK, 40mpg, rear defog, radials pkg, AM, \$4995, B/O, Mingo, 232-2412
- '71 FORD MAVERICK, 6cyl, auto, 4gd tires, many new parts, gd cond, some rust, \$400, Joan, 276-9521
- '79 MALIBU WAGON, PS, PB, 33Kmi, sm V8, 18mpg, like new, \$4500, Pat, 280-7246
- '74 PLYMOUTH DUSTER, 4new tires, 3spd on the floor, nds some work, dependable, \$600, B/O, Joy, 248-4145
- '75 VW DASHER, 4spd, 30mpg, Ziebart, gd cond, \$1400, B/O, Don, 249-4965
- '80 FORD MUSTANG, 4spd, 4cyl, 2dr, PS, AM/FM, yellow, \$4800, William, 251-1660
- '78 CAMARO, 4spd, V8, PS, PB, 30Kmi, AM/FM cass, spoiler, \$4200, B/O, Jayne, 249-4987
- '80 AUDI 4000S, auto, all options, 45Kmi, \$9500, Stanley, 249-4062
- '79 MALIBU, 2dr, AC, PS, PB, auto, gd cond, B/O over wholesale bluebook, Mary, 225-4275
- '77 IMPALA, sm 8, auto, PS, PB, FM stereo, new radials, well maint, hl miles, exc cond, \$1500, Gail, 223-7443
- '81 CHEVETTE, diesel, 45mpg, 5spd std, 7500mi, \$5800, Angela, 223-9091
- '79 FORD RANGER PICKUP, auto, PS, PB, AM/FM, push bar, fog lights, red w/wht top, \$5995, William, 223-9938
- '73 MAZDA RX3, 70Kmi, runs gd, B/O, inexpensive, Yash, 223-9455

MOTORCYCLES

- '75 HONDA 550-FOUR, only 13Kmi, new in '76, one owner, exc cond, \$1000, B/O, Rowena, 223-9429
- '75 KAWASAKI Z1B, 6000miles, gd cond, \$1500, Gary, 223-4345
- '81 PEUGEOT MOPED, like new, 200miles, \$395, Maryann, 251-1474

- HONDA CB750K, exc cond, \$1895, Eileen, 226-7159
- '80 HONDA CM400T, fairing, rack, \$1100, Mark, 225-6325
- '78 YAMAHA 650SE, black, helmets, anti-theft chain, exc cond, B/O, Dave, 280-7241
- '80 SUZUKI GS1100L, 2500mi, sissy bar, hi-way pegs, showrm cond, black, \$2600, B/O, Susan, 231-5401
- '81 SUZUKI G650EX, 2700mi, quicksilver fairing, lugg rack, trunk, exc cond, \$2500, B/O, Don, 223-8827
- '81 KAWASAKI 440, 3Kmi, black, exc cond, \$1500, June, 228-2087

MISCELLANEOUS

- BEDSPREAD, king sz, orange & gold, \$20, B/O, Beth, 289-6230
- SNOW TIRES, 1pr, bias 4ply belted Armstrongs, H78-14 whitewalls, used 1 seas, B/O, Gerald, 247-2494
- MONTAYA ELECTRIC GUITAR, black, mint cond, \$95, optional amp, \$20, Lisa, 223-9261
- N.E. PATRIOTS SEASON TICKETS, 2seats, section 308, 9 games, no playoff option, \$225, Dave, 253-2432
- HP-25 prgrm w/adapt, spares, manuals, great back-to-school tool, \$46, Phil, 223-9217
- 8 TRACK TAPE DECK, auto, AM/FM, includes Pioneer amp, deck by Kraco, \$70, Jay, 231-7658
- CAMERA/LENSES, Pentax SPII 50mm f/1.4, 35mm f/3.5, 135mm f/3.5, \$250, Ken, 251-1678
- LUDWIG DRUMSET, 5pcs, high hat, cymbals, stool, extras, exc cond, Bob, 269-2051
- NIKON E/M, rarely used, must sell, exc cond, B/O, Vijay, 284-3282
- BASEMENT DOOR, Bilco, steel bulkhead door, orig \$125, asking \$60, Roland, 276-9337
- CAMERA SET, f2.8 Bronica C w/Komura 150/500mm lens, extras, \$500, Gary, 289-1480

RENTALS

- CHALET, N. Conway, 4bdrm, 2wdstoves, brand new, NH foliage, \$325/wk, some wkends, Fran, 231-5314
- OCEANFRONT COTTAGE, BrantRockBeach, Marshfield, slps 9, \$300/wk, starting 9/11, Karen, 234-4412
- VACATION HOME, N. Conway, NH, 5bdrm, 3bath, frplc, fully equipped, laund, Teri, 223-7367

APARTMENT, ChestnutHill area, 2bdrm, 1 bath, new w/w crptng, \$595/mo, Ann, 251-1864

APT, Maynard, walk to ML, 6rm, 2bdrm, bsmnt, gas ht, w/w crpt, \$425+utils, avail immed, Linda, 223-6560

HOUSE, Falmouth, Maravista, slps 6, fully equipped, 100 ft to salt water, quiet area, \$250/wk, Paul, 279-5328

LAKEFRONT COTTAGE, KezarLake, Lovell, ME, 3bdrm, fully equipped, \$250/wk, Don, 265-1496

ROOMMATES

- HOUSEMATE, F, 2bdrm house in Concord, \$350 + 1/2 utils, Barb, 251-1532
- HOUSEMATE, Lancaster area, \$250/mo, Diane, 223-0916
- HOUSEMATE, Bolton, 1 acre, pref non-smoker, pets possible, \$187 + 1/4 utils, Jean, 223-7507
- ROOMMATE, F, 2bdrm apt, Worcester, nr Boylston, pool, tennis, \$200 includes ht, Jean, 245-5232
- ROOMMATE, F, nd 3rd roommate, 6rm apt, pref mid-20's, \$160+, Rose, 234-4703
- ROOMMATE, M/F, Marlboro, 2bdrm apt, AC, pool, tennis, \$225 + 1/2 elec, Sandy, 234-4740
- HOUSEMATE, F, responsible non-smoker, 26-35, \$265 + 1/2 utils, Velvet, 247-2288
- HOUSEMATE, Chelmsford, washer & dryer, grand piano, \$150 + utils, Lesley, 249-4042
- HOUSEMATE, M/F, 2bdrm, Merrimack, NH, non-smoker, \$225 includes all, Diane, 278-4462

APPLIANCES

- RANGE HOOD, duct free, coppertone, 2spd fan, light, \$10, Lou, 231-5473
- AIR CONDITIONER, large, 220V, window type, free, David, 247-2052
- FREEZER, Sears, 15cu ft chest, w/5 baskets, exc cond, \$300, Judith, 234-4774
- REFRIGERATOR, working cond, older, \$40, Jay, 223-9123
- APPLIANCES, elec washer, dryer, refrig, dishwasher, gas stove, all gd cond, Kathy, 223-6625
- REFRIG/FREEZER, side-by-side, coppertone, works fine, \$100, B/O, MaryPat, 276-9878
- AIR CONDITIONER, Sears-Kenmore, portable, 4000BTU, 2 mos old, exc cond, orig \$210, \$150, David, 273-3111

MARKETPLACE PK03-1/K23

Type or print clearly. Ads are published on a first-come, first-served basis. The full name and 7-digit DTN number is required. Home phone numbers will not be printed.

CATEGORY _____

ITEM _____

DESCRIPTION _____

PRICE _____

DTN _____ LOCATION-M/S _____

NAME _____

first last (only 1st names are printed)

Deadlines for DTW

The next four issues and deadlines for submitting articles for "Digital This Week" are:

- Sept. 20 issue-Sept. 9 deadline
- Sept. 27 issue-Sept. 23 deadline
- Oct. 25 issue-Oct. 14 deadline
- Nov. 8 issue-Oct. 28 deadline

Travel tips still available

The brochure, "Travelers' Medical Tips," is still available for U.S. based employees. For copies, write to P&CS Order Administration, NR02-2/WS. Please include with your request name, badge number, cost center, form number EJ21125-18 and quantity needed.

DCU lowers first mortgage rate

Digital Credit Union's (DCU) first mortgage rate has been lowered from 16.5 to 16 percent effective immediately.

First mortgages are available to DCU members in the New England area. Applicants should contact their nearest branch office.

BU MET College registration reminder

BU Metropolitan College will be back in the Greater Maynard area on Wednesday, Sept. 8. They will conduct registration at the MRO cafeteria from 11 a.m. to 2 p.m. and at the Acton-Boxboro Regional High School from 4:30 to 7:30 p.m.

On the move

Reference systems is moving from Lexington back to Parker Street (PK03) on Sept. 10. The Maynard mailstop will be PK03-1/K71. The next issue of the Digital Telephone Directory will list the new phone numbers for the group.

Computer Club presents

The Digital Computer Club will hold a PDT presentation/workshop on Sept. 29 from 6 to 8 p.m. at the Mill cafeteria conference room (ML05-4). The speakers will be Martin Gentry, RT11 developer, and Kevin Porter, RT11 technical support specialist.

The demonstration will include installing a PDT-11/130 and a PDT-11/150 and running standard software, games and other tools. A question and answer period will follow.

A business meeting will be held after the workshop to discuss future activities. All employees are welcome to attend.

Legislature affects Hancock coverage

Anyone having obtained services from a licensed independent clinical social worker on or after March 24, 1982, may submit a claim to John Hancock for consideration. For expenses to be paid, the employee must be a resident of Massachusetts, and the social worker's practice must be in Massachusetts.

The second piece of legislature deals with couples in Massachusetts who became legally divorced or separated on or after July 1, 1982. Medical and/or dental coverage for the separated or divorced spouse may be continued by John Hancock if the court decree so stipulates. The employee must have had dependent coverage prior to the court decree for this coverage to be effective.



Personal Computing Center

A presentation and demonstration on Digital's new personal computers is now available to groups at the Personal Computing Center at ML05-2.

The Internal Equipment Group, IEG, offers a preliminary hour presentation on the Professional 325 and 350, DECmate II and Rainbow. Following IEG's overview is a demonstration of the hardware configurations and software possibilities on the Professional 350.

Technical and non-technical presentations are scheduled on Tuesdays and Thursdays between 9 and 11 a.m. Sessions on Wednesdays between 11 a.m. and noon are for large groups or groups with special needs. Special requests for other days and times will be considered.

To schedule a demonstration, call Jeanne Kurtz at DTN 223-8927 or Debbie Buckley at DTN 223-5527.

MR Winter Racquetball League

The Marlboro Racquetball League will begin its winter season the week of Sept. 20 at the Shrewsbury Racquet Club off Rte. 9.

Seven courts will be available at 6 p.m. on Fridays. Three courts are reserved on Wednesdays at 6 and 7 p.m. for more serious players. To register, please send a memo through inter-office mail to David Robert at MRO1-2/E47 stating the day you want to play and your level of talent.

Brochure available on Logan Airport

Due to the major road construction going on around Logan Airport, Massport is offering a pamphlet explaining the new traffic routes and terminals. For copies, call Charity Brown, Massport Authority, at 617-482-2930 ext. 241.

Hancock issues new cards

John Hancock is issuing new identification cards to all employees enrolled in the Medical Plan. The new cards, which are available through your local Personnel department, highlight the July 1 changes to the Medical Plan and the new address of the claims office. That address is: P.O. Box 1000, Braintree, Mass. 02184.

Contact your Personnel department for your new ID card immediately.

Bowling league registration

Registration is now being accepted for the Wednesday Night Bowling League. This is a candlepin league playing at Kelly's Lanes in Maynard. Bowling for average is Sept. 8.

Games start at 5:30 p.m. There is a registration fee of \$2. For information or to register, call Brian Smith at DTN 223-4200.

Tuesday Candlepin League

The Tuesday Night Candlepin Bowling League has opened registration for the season beginning Sept. 21. The League bowls at Kelly's Lanes in Maynard at 5:30 p.m. Tuesday, Sept. 14, will be the night for new bowlers to establish an average.

There is a registration fee of \$2. For more information or to register, call Lou Cesario at DTN 276-9285.

Shuttle schedule change

Depart	Arrival
From MK01 to Maynard (PK03)	
7:45 a.m.	8:55 a.m.
10:40 a.m.	11:40 a.m.
2:00 p.m.	3:40 p.m.

From MK01 to Spitbrook	
7:45 a.m.	8:10 a.m.
10:40 a.m.	11:05 a.m.
2:00 p.m.	2:50 p.m.

From Maynard (PK03) to MK01	
9:00 a.m.	10:25 a.m.
12:25 p.m.	1:40 p.m.
3:45 p.m.	5:00 p.m.

From Maynard (PK03) to Spitbrook	
9:00 a.m.	9:50 a.m.
12:25 p.m.	1:05 p.m.
3:45 p.m.	4:30 p.m.

Changes effective September 7, 1982.

TICKET SALES

Ringing Brothers and Barnum and Bally Circus

WHERE: Boston Garden
 WHEN: Thursday, Oct. 7 8:00 p.m. and/or Tuesday, Oct. 26, 7:30 p.m.
 TICKETS: Regular \$9. Employees: \$7. (adults as well as children)
 Please specify date on order form.

New England International Auto Show

WHERE: Hynes Veterans Auditorium (Prudential Center - Boston)
 WHEN: Oct. 30 through Nov. 7
 TICKETS: Regular \$4. Employees: \$2.75
 Orders must be received by October 18th.

New England Renaissance Festival

WHEN: Sunday, Oct. 10.
 Buses leave Parker Street (PK3) Parking Lot promptly at 9 a.m.
 COST: \$12. Adults. \$9.50 Children 4 years to 12 years.
 COST INCLUDES: Transportation and admission.
 Reservations must be received by October 4th.

The Montreal Spectacular

WHEN: Oct. 1 - Oct. 3
 TOUR INCLUDES: Deluxe accommodations at the Place Dupuis Old Munich Restaurant with roast beef and wine. Four meals (two breakfasts, one lunch, and one dinner). Gray Line sightseeing tour. All baggage fees, taxes and tips. Round trip motorcoach transportation.
 TOUR COST: \$159. per person, double occupancy
 Buses will depart Parker Street (PK3) parking lot at approximately 7:30 a.m. Friday morning. Please see your local employee activities office for order forms.
 Reservations must be received by September 20th.

Improving our community relations

Maynard is Digital's hometown. It is a compact community whose population is swelled daily by the influx of Digital workers.

Our numbers are apparent during rush hour. But what may not be so obvious is our daily "invasion" of downtown Maynard during lunch time.

Jim Malgaldi, Mill facility manager, said, "Good community relations are important for our company. We are fortunate to have shops and restaurants adjacent to our Mill. However, we should remind ourselves that

certain private properties that are intermingled with the shops and restaurants, must be respected."

The Chief of Police is asking employees to refrain from lounging on private lawns and stairways. Employees are reminded that the Union Congregational Church on Main Street and its lawn are private property. The police officer on traffic duty will continue to ask people not to sit on the wall which is also church property. Cooperation with this reasonable request is urged.

Crotched Mountain Ski Area

Digital employees may save 50% on lift tickets
 PRICE: Reg. \$50. Employees: \$25.
 Each book contains 4 tickets: 3 for use any Saturday, Sunday, or vacation period, 1 for use any night Tuesday - Saturday.
 Please see local employee activities office for "special" order forms.
 Orders must be received by September 24th.

Red Sox Boosters Sox - Yankee Weekend

WHEN: Oct. 2-3
 New York Weekend includes: Round trip transportation (Buses depart Parker Street PK3 parking lot. Specific time to be announced). Accommodations Saturday night at the New York Hilton. Porterage of a suitcase at the hotel. Transfers between the hotel and Yankee Stadium. Tickets to the Boston Red Sox - New York Yankee's baseball games (reserved seats) October 2 and 3rd. City and State Hotel taxes, porterage and service charge imposed by the tour operator.
 PRICE: \$105. per person, double occupancy.
 See local employee activities office for "special" order form.
 Reservations must be received by September 20th.

U.S. Employment keeps watch on labor force

We are all watching the economy, the business climate, the industry. And as market shares change, the work force must shift and change with it.

The U.S. Employment Information Center at Digital is more than a reassignment center, but a network of employment contacts striving to meet the work force needs of the company. Managed by Jack Fusco, the center gathers and distributes the names of qualified employees and approved open positions.

Though the numbers of people expected to be looking for reassignment has been lower than expected, Jack is sure that line managers are not fully aware of the center and its resources. "We need to keep our talented work force mobile, to be able to move our people where the employment needs are the greatest," says Jack.

The number of available people for reassignment and open positions in each organization should be verified and submitted by each Personnel or line manager with complete job codes and/or job functions to the center. To keep recruiters, employment reps and line managers informed on internal employment activities, the center publishes a bi-weekly People/Job opportunity booklet.

To list positions or persons available for reassignment with the U.S. Employment Information Center, contact your local Personnel department.

Sunnycroft Ranch Resort in Catskills of New York

Weekend package, Oct. 22-24

4 in room, \$89.95 per person
 3 in room, \$109.95 per person
 2 in room, \$119.95 per person

Five day package, Oct. 17-22

4 in room, \$209.95 per person
 3 in room, \$229.95 per person
 2 in room, \$249.95 per person
 single, \$299.95

CLIP AND SEND

Use a separate form for each event. (Make photocopies, if necessary).

Event _____ Date of Event _____

I understand that if the allotment of tickets has been sold out, my money will be refunded. I have enclosed a stamped, self-addressed envelope with my home address.

Number of Tickets _____ Check enclosed for \$ _____

Name _____

Mailstop _____ Badge No. _____ DTN _____

Home Address _____

State and ZIP Code _____

Make check payable to DEC Recreation Association and forward with this coupon to: DEC Recreation Association, PO Box 310, Maynard, MA 01754.